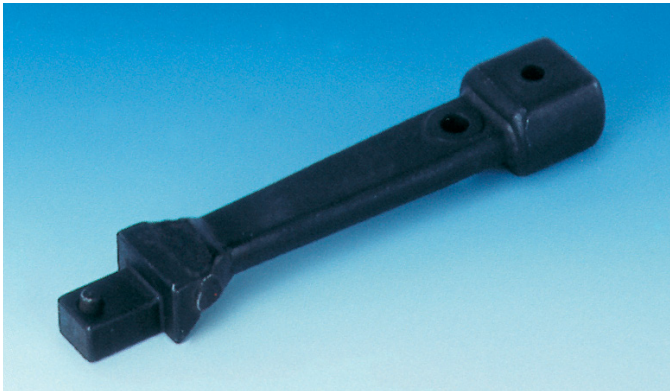


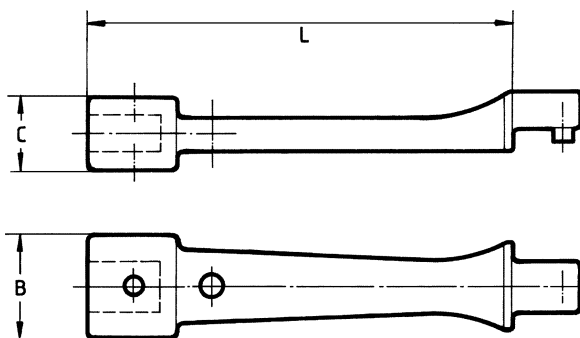
## Interchangeable Heads (Rectangle) – Adaptors



Extension adapter with rectangular holder 9x12 mm to achieve a higher torque or to reach deeper screws.

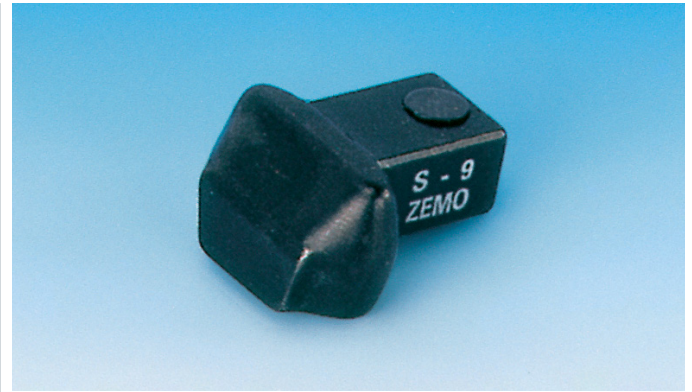
**NOTE:** Due to the increased lever length, the torque must be calculated or set individually.

- ▶ Rectangular insert connector 9x12 mm.
- ▶ Locking by means of spring pin.
- ▶ Tool steel, forged, welded, black-finished.



### S9-XT

Model	Item No.	max. N-m	Dimensions [mm]		
			B	C	L
S9-XT-100	R712587	110	24	18	100

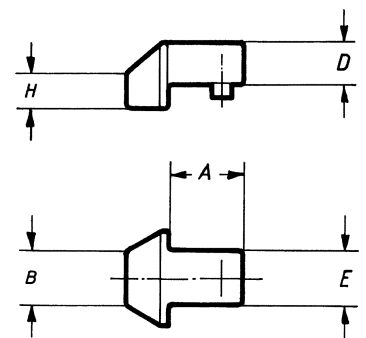


Weld-on adapter with rectangular connection 9x12 mm or 14x18 mm. Ideal if you want to produce a customised tool that is to be used with a rectangular torque spanner.

Due to the special configuration of these special attachments, it is hardly possible to maintain a consistent centre distance. When exchanging heads with different centre distances, the torque **must** be readjusted in each case!

It is also important to ensure that exactly the intended head and torque wrench combination is used when setting the torque value on a testing device.

- ▶ Standard welding adapter for the production of special tools.
- ▶ Locking by means of spring pin.
- ▶ Tool steel, forged, black-finished.
- ▶ On request, we can supply special tool heads according to drawings or samples.



### S9-TA

Model	Item No.	max. N-m	Dimensions [mm]				
			A	D	E	B	H
S9-TA	R716200	100	16	9	12	14	8

### S14-TA

Model	Item No.	max. N-m	Dimensions [mm]				
			A	D	E	B	H
S14-TA	R716201	300	25	14	18	25	11



Further  
info on our  
website.  
24/7