

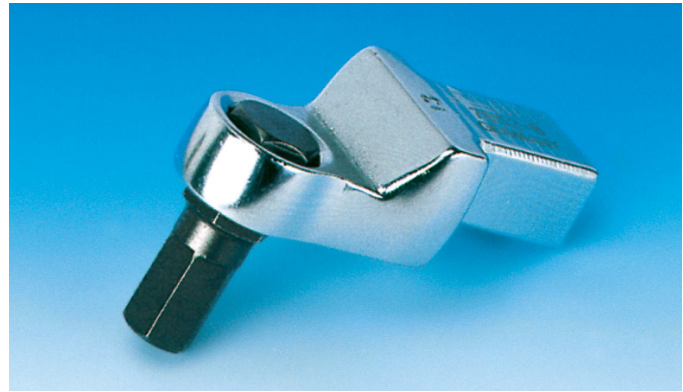
Interchangeable Heads (Rectangle) – Fixed Drives



Interchangeable square drive head with rectangular insert connector 9x12 mm resp. 14x18 mm. The attachment is secured by a spring-loaded retaining pin.

The load capacity depends on the output size and may be less than the capacity of the torque spanner used.

- ▶ Rectangle insert 9x12 mm resp. 14x18 mm.
- ▶ Locking by means of spring pin.
- ▶ Centre distance depending on model.
- ▶ Forged alloy steel, partially chrome plated.

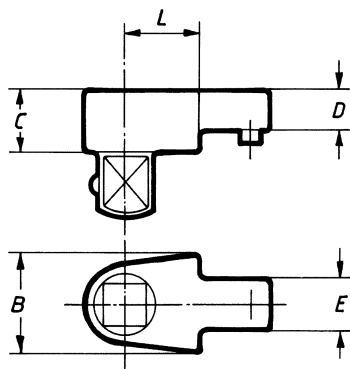


Interchangeable hexagon drive head with 9x12 mm rectangular insert connector. The attachment is secured by a spring-loaded retaining pin.

The load capacity depends on the width across flats and may be less than the capacity of the torque spanner used.

- ▶ Rectangular connection 9x12 mm.
- ▶ Centre distance 17,5 mm.
- ▶ Arretierung mittels Federstift.
- ▶ Forged alloy steel, partially chrome plated.

INFO
Tool attachments with the same centre distance can be interchanged without having to reset the torque wrench.
However, when replacing the head with a different centre distance, the torque must be readjusted each time!

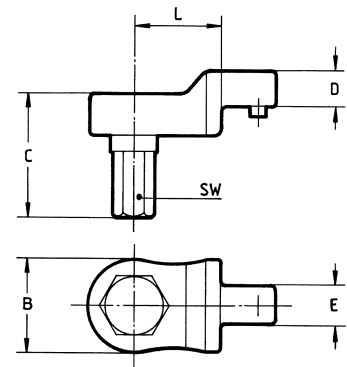


S9-SD

Model	Item No.	SqD inch	max. N-m	Dimensions [mm]		
				B	C	L
S9-SD 1/4	R716257	¼	25	20	14	17.5
S9-SD 3/8	R716258	⅜	90	20	14	17.5
S9-SD 1/2	R716259	½	100	20	14	17.5

S14-SD

Model	Item No.	SqD inch	max. N-m	Dimensions [mm]		
				B	C	L
S14-SD 1/2	R716759	½	250	27	18	25
S14-SD 3/4	R716760	¾	300	40	25	25



S9-HD

Model	Item No.	A/F mm	max. N-m	Dimensions [mm]		
				B	C	L
S9-HD 3	R716160	3	25	16	25	17.5
S9-HD 4	R716161	4	25	16	25	17.5
S9-HD 5	R716162	5	25	16	25	17.5
S9-HD 6	R716163	6	25	16	25	17.5
S9-HD 7	R716167	7	40	16	29	17.5
S9-HD 8	R716164	8	40	16	29	17.5
S9-HD 10	R716165	10	40	16	29	17.5

