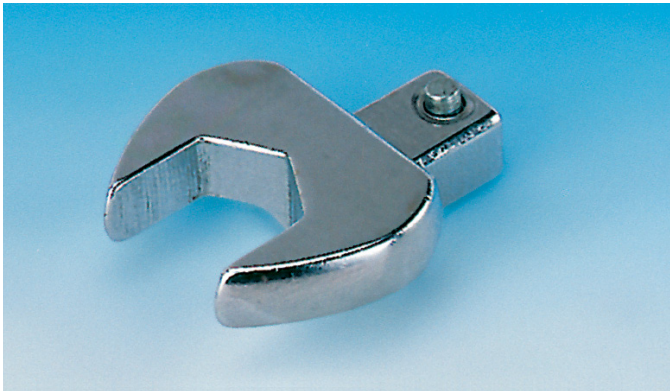


## Interchangeable Heads (Rectangle) – Open End



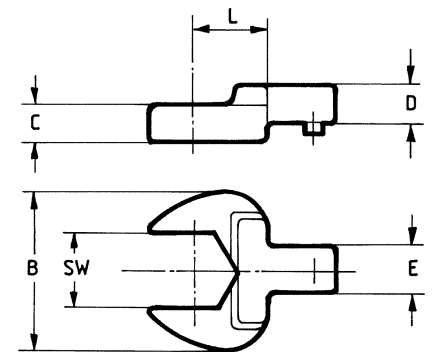
Interchangeable open-end spanner head with rectangular insert connector 9x12 mm resp. 14x18 mm. The attachment is secured by a spring-loaded retaining pin.

The load capacity depends on the width across flats and may be less than the capacity of the torque spanner used.

- ▶ Rectangular connector 9x12 mm resp. 14x18 mm.
- ▶ Centre distance depending on model.
- ▶ Locking by means of spring pin.
- ▶ Forged ally steel, chrome plated.
- ▶ Optionally also available in inch spanner widths.

**INFO**  
Tool attachments with the same centre distance can be interchanged without having to reset the torque wrench.

However, when replacing the head with a different centre distance, the torque must be readjusted each time!



### S9-OE

Model	Item No.	A/F mm	Dimensions [mm]		
			B	C	L
S9-OE 7	R716050	7	22	5	17.5
S9-OE 8	R716051	8	22	5	17.5
S9-OE 9	R716052	9	26	5.5	17.5
S9-OE 10	R716053	10	26	5.5	17.5
S9-OE 11	R716054	11	26	5.5	17.5
S9-OE 12	R716055	12	30	7	17.5
S9-OE 13	R716056	13	30	7	17.5
S9-OE 14	R716057	14	35	8	17.5
S9-OE 15	R716058	15	35	8	17.5
S9-OE 16	R716059	16	38	8.5	17.5
S9-OE 17	R716060	17	38	8.5	17.5
S9-OE 18	R716061	18	42	9	20
S9-OE 19	R716062	19	42	9	20

### S14-OE

Model	Item No.	A/F mm	Dimensions [mm]		
			B	C	L
S14-OE 13	R716556	13	30	7	25
S14-OE 14	R716557	14	35	8	25
S14-OE 15	R716558	15	35	8	25
S14-OE 16	R716559	16	38	9	25
S14-OE 17	R716560	17	38	9	25
S14-OE 18	R716561	18	42	10	25
S14-OE 19	R716562	19	42	10	25
S14-OE 21	R716564	21	50	11	25
S14-OE 22	R716565	22	50	11	25
S14-OE 24	R716566	24	53	12	25
S14-OE 27	R716567	27	60	13	30
S14-OE 30	R716568	30	66	14	30
S14-OE 32	R716569	32	66	14	32.5
S14-OE 34	R716570	34	66	14	32.5
S14-OE 36	R716571	36	74	15	32.5
S14-OE 38	R716572	38	74	15	32.5
S14-OE 41	R716573	41	82	15	36.5



Further  
info on our  
website.  
24/7