

Hardwire Torque Wrench – QLLS



Version "MH" with knurled metal handle

- ▶ Click-type torque wrench with micrometre scale and limit switch.
- ▶ Torque adjustment via rotary knob.
- ▶ Spiral cable stretchable up to 2 m.
- ▶ Limit switch specification: AC30V below 1A, DC30V below 1A.
- ▶ Ratchet head with 24 teeth and 15° working angle.
- ▶ Improved adjustment and locking mechanism.
- ▶ Conforms **EN ISO 6789**.*
- ▶ Supplied with traceable factory calibration certificate (ISO, JCSS).*

Pokayoke Click-Type Torque Wrench

Adjustable torque wrench with limit switch output to eliminate missed tightening. The 24-tooth ratchet with 15° small working angle makes it easier to work in confined spaces.

Torque setting is easy to adjust using the rotary knob and can be read easily and precisely using the large, clear scale. Upon reaching the set torque, the torque wrench "clicks" to complete tightening while the limit switch simultaneously sends out a contact signal.

Signals from limit switch are captured on a programmable logic controller (PLC) or similar device to establish a Tightening Assurance System using assembly line interlock controls.

The limit switch can be connected to a CNA-4mk3 count checker (sold separately) to easily create a tightening count management system.

LS wrenches are supplied with a durable curl cord.



Optional: Protective cover for ratchet head.



Optional: Count checker CNA-4mk3.



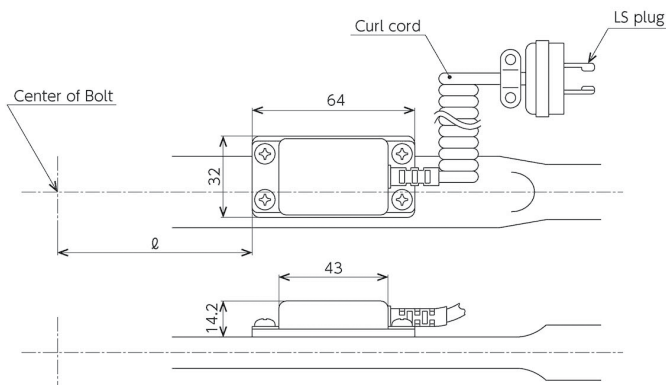
Optional: Connector socket/plug.



Optional: Ratchet repair kit.

Options / Accs / Spares

- Imperial (lbf-in) or metric (kgf-cm) scale on request.*
- Count checker CNA-4mk3
- Protective cap for ratchet head
- Ratchet repair kit
- Connecting plug/socket
- Coiled cable with switch



QLMS/QLLS

| Model | Item No. | Torque Range N-m | Graduation cN-m | Applicable Screws | | OvL mm | Grip Ø mm | Weight kg | SqD inch | Handle |
|-----------|------------|---------------------|--------------------|-------------------|------------|-----------|--------------|--------------|-------------|--------|
| | | | | Com Steel | Hi Tension | | | | | |
| QLMS 10N | T212007-LS | 2 - 10 | 0,1 | (M7) | M6 | 219 | 37 | 0,48 | ¼ | Resin |
| QLMS 15N | T212010-LS | 3 - 15 | 0,1 | M8 | (M6) M7 | 219 | 37 | 0,48 | ¼ | Resin |
| QLLS 25N5 | T212016-LS | 5 - 25 | 0,2 | M8 | (M7) | 237 | 37 | 0,50 | ⅜ | Resin |

QLMS-MH

| Model | Item No. | Torque Range N-m | Graduation cN-m | Applicable Screws | | OvL mm | Grip Ø mm | Weight kg | SqD inch | Handle |
|-------------|------------|---------------------|--------------------|-------------------|------------|-----------|--------------|--------------|-------------|--------|
| | | | | Com Steel | Hi Tension | | | | | |
| QLMS 2N-MH | T212075-LS | 0,4 - 2 | 0,02 | M4 | (M3,5) | 194 | 37 | 0,35 | ¼ | MH |
| QLMS 5N-MH | T212078-LS | 1 - 5 | 0,05 | M5, M6 | (M4,5) | 194 | 37 | 0,35 | ¼ | MH |
| QLMS 10N-MH | T212081-LS | 2 - 10 | 0,1 | (M7) | M6 | 219 | 37 | 0,38 | ¼ | MH |
| QLMS 15N-MH | T212084-LS | 3 - 15 | 0,1 | M8 | (M6) M7 | 219 | 37 | 0,38 | ¼ | MH |

