

Parts List

| No. | Name of Parts | Per Set | Parts No. | No. | Name of Parts | Per Set | Parts No. |
|-----|----------------------------------|---------|----------------|-----|---|---------|----------------|
| 1 | Motor Case Assy. | 1set | 0476 0011 0099 | 6 | Hammer Case Assy. | 1set | 0455 0401 0099 |
| * | (a) Motor Case (A) | 1 | 0477 0011 0001 | | (a) Hammer Case | 1 | 0455 0401 0000 |
| * | (b) Motor Case (B) | 1 | 0477 0011 0002 | | (b) Main Shaft Bushing | 1 | 0259 0612 0000 |
| | (c) Lamp Holder | 1 | 0477 0959 0000 | 7 | Hex. Socket Head Bolt (M4×14) | 4 | 8070 3008 0000 |
| | (d) Motor Case (C) | 1 | 0477 0011 0003 | 8 | Spring Washer (M4) | 4 | 9200 3012 0000 |
| | (e) Tapping Screw (M3×16) | 6 | 9540 1018 0000 | | | | |
| | (f) Motor Assy. | 1set | 0444 0330 0399 | | Parts for YZ-N800A | | |
| | (g) FanProtector | 1 | 0456 0363 0000 | 2A | Liner Case Assy. | 1set | 0455 0422 0098 |
| | (h) Fan D03X-05TM11 (CX) | 1 | 0446 1556 0000 | | (j) Main Shaft (A-type) | 1 | 0455 0614 0051 |
| | (i) Rubber Packing | 1 | 0446 0359 0000 | 12 | Bit Chuck Assy. | 1set | 2057 0414 0099 |
| | (j) Cross Recessed Screw (M3×16) | 2 | 9410 2056 0000 | | (a) Bit Chuck | 1 | 2057 0414 0000 |
| | (k) Power Circuit Board Assy. | 1set | 0446 0195 0399 | | (b) Ball (1/8) | 1 | 9150 3009 0000 |
| | (l) Head Screw | 3 | 9410 4002 0000 | | (c) Spring (13.5×10) | 1 | 8020 1340 0000 |
| | (m)Harness (A) | 1 | 0460 0208 0001 | | (d) Spring Washer | 1 | 2331 0419 0000 |
| | (n) Controll Circuit Board Assy. | 1set | 0476 1608 0099 | | (e) Retaining Ring (10×1) | 1 | 8030 1009 0000 |
| | (o) O-Ring (S6) | 2 | 9010 4026 0000 | | | | |
| | (p) Harness (B) | 1 | 0456 0208 0002 | | Standard Accessories | | |
| | (q) Throttle Knob Assy. | 1set | 0446 0153 0199 | | TF Pin (2×9) | 1 | 8051 6001 0000 |
| | (r) Spring (7.5×26) | 1 | 8020 1449 0000 | 9 | Protector | 1 | 0476 0029 0000 |
| | (s) Spring (3.5×23) | 1 | 8020 1450 0000 | 10 | Battery Pack (BPL-1820) | 1 | 0446 1521 0000 |
| | (t) Reverse Lever Assy. | 1set | 0446 0007 0099 | | | | |
| | (u) Reverse Lever Spring | 1 | 0446 1615 0000 | | Optional Accessories | | |
| | (v) Tapping Screw (M2.6×5) | 1 | 9540 1019 0000 | 11 | Protector (for BPL-1820) | 1 | 0446 0029 0001 |
| | Binding Band (CV-70N) | 2 | 9790 1008 0000 | 10 | Battery Pack (BPL-1820) | 1 | 0446 1521 0000 |
| 2 | Liner Case Assy. | 1set | 0455 0422 0099 | | Battery Charger (BC0075G) | 1 | 0446 1606 0000 |
| | (a) Liner Case | 1 | 0193 0422 0000 | | Power Cord 1.5M (Domestic) | 1 | 8521 0008 0000 |
| | (b) O-Ring (1.78×29.87×33.43) | 1 | 9011 2003 0000 | | Power Cord 2.0M(R. Pin for Europe) | 1 | 8521 0009 0000 |
| | (c) Liner Cap | 1 | 0186 0423 0000 | | Power Cord 1.5M<VM0718-VM0719>(for China) | 1 | 8521 0029 0000 |
| | (d) Liner Upper Plate | 1 | 0186 0424 0000 | | Power Cord 1.5M<VM0228A-VM0296>(for US) | 1 | 8521 0032 0000 |
| | (e) O-Ring (1.78×26.7×30.26) | 1 | 9011 6064 0000 | | Power Cord 1.5M<VM0773-VM0776>(for India) | 1 | 8521 0033 0000 |
| | Liner Assy. | 1set | 0193 0425 0099 | | | | |
| | (f) Liner | 1 | * | | | | |
| | (g) Pin (2×4.8) | 4 | 8052 1041 0000 | | | | |
| | (h) Relief Valve | 1 | 0445 0245 0000 | | | | |
| | (i) Pin (1.5×4) | 1 | 8051 1314 0000 | | | | |
| | (j) Main Shaft | 1 | 0455 0614 0001 | | | | |
| | (k) Blade | 2 | 0352 0719 0000 | | | | |
| | (l) Spring (3.1×20) | 2 | 8020 1296 0000 | | | | |
| | Liner Lower Plate Assy. | 1 | 0186 0426 0099 | | | | |
| | (m)Liner Lower Plate | 1 | 0186 0426 0000 | | | | |
| | (n) Pin (3×5) | 1 | 8052 1031 0000 | | | | |
| | (o) Adjust Bolt | 1 | 0444 0522 0000 | | | | |
| | (p) O-Ring (N2) | 1 | 9010 4001 0000 | | | | |
| | (q) Back-up Ring (N2) | 1 | 9090 2001 0000 | | | | |
| | (r) Nylon Bushing | 1 | 0181 0431 0000 | | | | |
| | (s) Oil Plug | 2 | 0181 0010 0000 | | | | |
| | (t) O-Ring (N2) | 2 | 9010 4001 0000 | | | | |
| | (u) O-Ring (P12) | 1 | 9011 7001 0000 | | | | |
| | (v) Back-up Ring (12×16×0.8) | 1 | 9090 1010 0000 | | | | |
| 3 * | Washer (12.5×18×0.3) | 1 | 8041 5034 0000 | | | | |
| 4 * | Washer (12.5×18×0.5) | 1 | 8041 5011 0000 | | | | |
| 5 * | Washer (12.5×18×1) | 1 | 8041 5021 0000 | | | | |

* Please replace the Motor Case(A) and the Motor Case(B)as a unit. Also please describe our model name when you order.

The part "*" can not be supplied individually. So please order it as a unit of assembly shown by arrow mark(↑).

★ Marked parts may not be used, in some case.

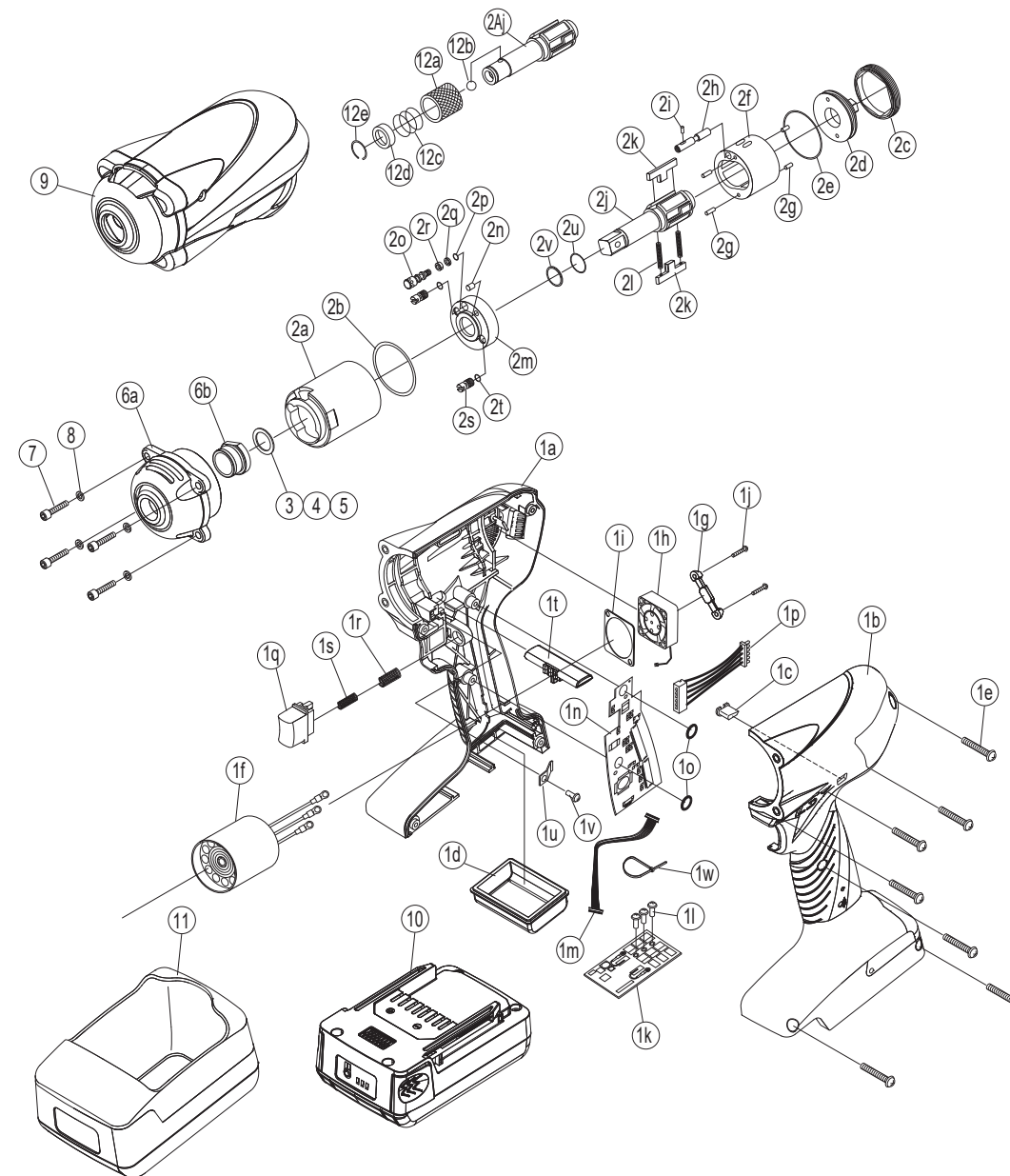
045500-1902

YOKOTA

Battery Impulse Wrench

| MODEL (YES.No.) | TOOL No. |
|-----------------|----------------|
| YZ-NP800 (00) | 0476 0000 0000 |
| YZ-NP800A (00) | 0476 0000 0001 |

Exploded View



YOKOTA INDUSTRIAL CO.,LTD.