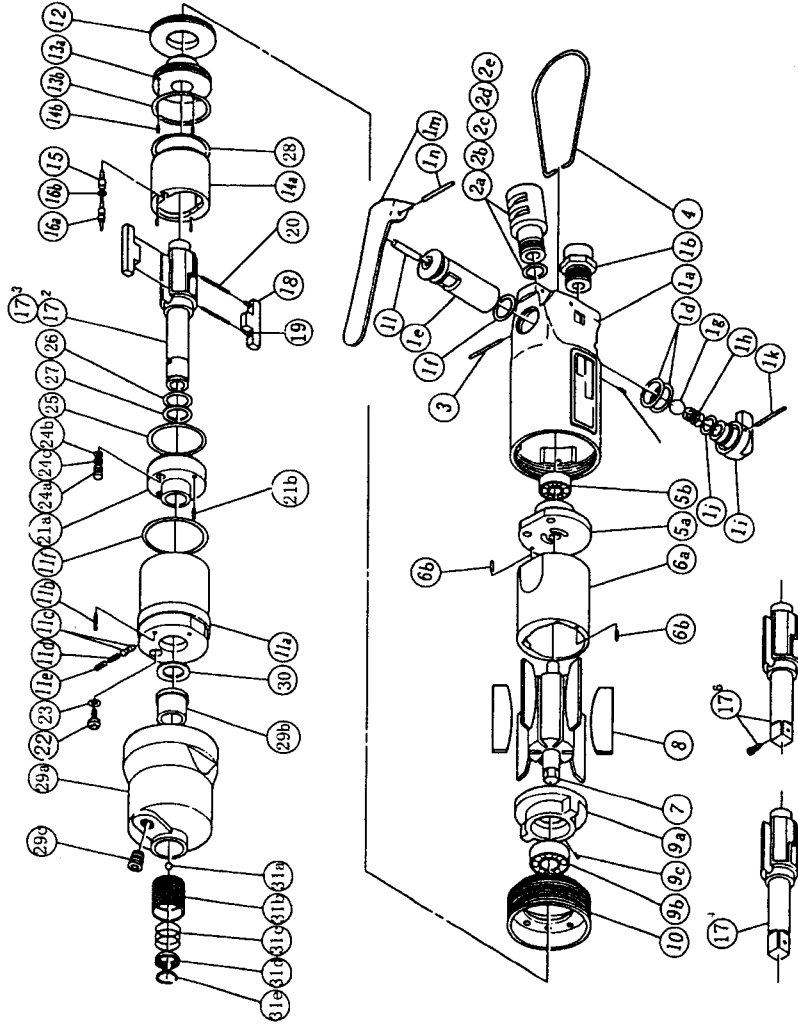


### IMPULSE WRENCH

MODELS (YESNo.)	TOOL No.
YX-500S (05)	0080 0000 05 00
YX-500SA (05)	0080 0000 05 01
YX-500SB (05)	0080 0000 05 02
YX-500SE (05)	0080 0000 05 04



### PARTS LIST

No.	Name of Parts	Per set	Parts No.	No.	Name of Parts	Per set	Parts No.
1	Motor Case Assy.	1 set	0080 0011 0199	14	Liner Assy.	1 set	0080 0425 0499
	a) Motor Case	1	※ ↑		a) Liner	1	※ ↑
	b) Hose Joint	1	0237 0113 0000		b) Pin 2.5X6 <41-44HRC>	4	8052 1030 0000
	c) Reverse Bushing	1	0080 0004 0000	15	Relief Valve	1	0081 0245 0000
	d) O-Ring N15	2	9010 4008 0000	16	Spring Guide (B) Assy.	1 set	0080 0510 0199
	e) Reverse Valve Assy.	1 set	0080 0005 0099		a) Spring Guide B	1	※ ↑
	f) Reverse Valve	1	※ ↑		b) O-Ring 0.7X2X3.4	1	9010 6020 0000
	g) O-Ring N12.5	1	9010 4006 0000	17	Main Shaft 3/8	1	0080 0614 0401
	h) Ball 5/16 R	1	9150 4002 0000	18	Blade	2	0080 0719 0200
	i) Spring 8X16	1	8020 1066 0000	19	S.R.Pin 2X5	0	9250 1010 0000
	j) Reverse Lever Assy.	1 set	0932 0007 0099	20	Spring 3.4X22.7	2	8020 1253 0000
	k) Reverse Lever	1	※ ↑	21	Liner Lower Plate Assy.	1 set	0135 0426 0099
	l) O-Ring P8	1	9010 1006 0000		a) Liner Lower Plate	1	※ ↑
	m) S.R.Pin 2X20	1	9250 1021 0000		b) S.R.Pin 3X8	1	9250 2022 0000
	n) A.A. Pin 4X21.8	1	8051 3057 0000	22	Oil Plug	1	9081 0010 0100
	o) Throttle Lever	1	0931 0110 0000	23	O-Ring N3	1	9010 4025 0000
	p) S.R.Pin 3X25	1	9250 5001 0000	24	Oil Stop Cap Assy.	1 set	0081 0602 0099
2	Silencer Assy.	1 set	0081 0053 0099		a) Oil Stop Cap	1	※ ↑
	a) Silencer	1	※ ↑		b) O-Ring N2	1	9010 4001 0000
	b) O-Ring N10	1	9010 4004 0000		c) Back-Up Ring	1	9090 2001 0000
	c) Silencer Sheet B	1	0095 0032 0002	25	O-Ring 1X29.2X31.2	1	9010 6022 0000
	d) Silencer Cap	1	2306 0084 0000	26	O-Ring 2.3X11.8X16.4	1	9010 6019 0000
	e) Snap Ring RTW-14	1	9040 1006 0000	27	Back-Up Ring 12X16X0.8	1	9090 1010 0000
3	S.R.Pin 3X16	1	9250 1050 0000	28	O-Ring 1.3X28.7X31.3	1	9010 6010 0000
4	Hanger	1	0004 0017 0000	29	Hammer Case Assy.	1 set	0086 0401 0099
5	Upper Plate Assy.	1 set	0080 0303 0299		a) Hammer Case	1	0086 0401 0000
	a) Upper Plate	1	0080 0303 0200		b) Main Shaft Bushing	1	0081 0612 0000
	b) Ball Bearing 607	1	9100 1003 0000	30	Socket Plug Ptl/8	1	8210 5001 0000
6	Cylinder Assy.	1 set	0080 0304 0199	30	Washer 12.5X18X0.5	1	8041 5011 0000
	a) Cylinder	1	※ ↑	30	Washer 12.5X18X1	1	8041 5021 0000
7	Rotor	2	9250 1011 0000		Standard Accessories		
8	Vane	6	0080 0305 0000		Universal Air Joint 1/4	1	9690 0015 0000
9	Lower Plate Assy.	1 set	0086 0307 0199		Hexagon Wrench H1.5X65X65	1	9610 1012 0000
	a) Lower Plate	1	0086 0307 0100		Hexagon Wrench H5	1	9610 1006 0000
	b) Ball Bearing 6900	1	9100 1046 0000		Parts for YX-500SA <05> - YX-500SB <05>		
	c) Pin 2.5X6	1	8055 1053 0000	17	2 Main Shaft	1	0080 0614 0351
10	Lower Plate Spacer	1 set	0080 0311 0100	17	3 Main Shaft	1	0080 0614 0352
11	Liner Case (A) Assy.	1 set	0080 0422 0398	31	Bit Chuck Assy.	1 set	2057 0414 0099
	a) Liner Case	1	※ ↑		a) Bit Chuck	1	2057 0414 0000
	b) Screw M3X8 P=0.5	1	9480 2024 0000		b) Ball 1/8 S	1	9150 3009 0000
	c) Rubber Plate	2	0259 0047 0000		c) Spring 13.5X10	1	8020 1340 0000
	d) Spring 3X5	1	8020 1288 0000		d) Spring Washer	1	2331 0419 0000
	e) Screw M4X4	1	9480 2031 0000		e) Retaining Ring 10X1	1	8030 1009 0000
	f) O-Ring N32	1	9010 4014 0000		Parts for YX-500SE <05>		
12	Liner Cap	1	0086 0423 0000	17	4 Main Shaft 3/8 Assy.	1 set	0080 0614 0659
13	Liner Upper Plate Assy.	1 set	0135 0424 0199		a) Liner Upper Plate	1	※ ↑
	a) Liner Upper Plate	1	※ ↑		b) O-Ring N28	1	9010 4029 0000

The part "※" can not be supplied individually.  
So please order it as a unit of assembly  
shown by arrow mark (↑).

★marked parts; use one of them.



# YOKOTA EUROPE BV

e-mail [info@impulsetools.com](mailto:info@impulsetools.com) <http://www.impulsetools.com>  
P.O. BOX 392 NL-1000 AJ AMSTERDAM PHONE: 020-625 29 53 FAX: 020-625 35 66  
Hydraulic Impulse Wrenches, Impact Wrenches, Drills, Grinders, Screw Drivers, Chippers, Scales, Pumps.