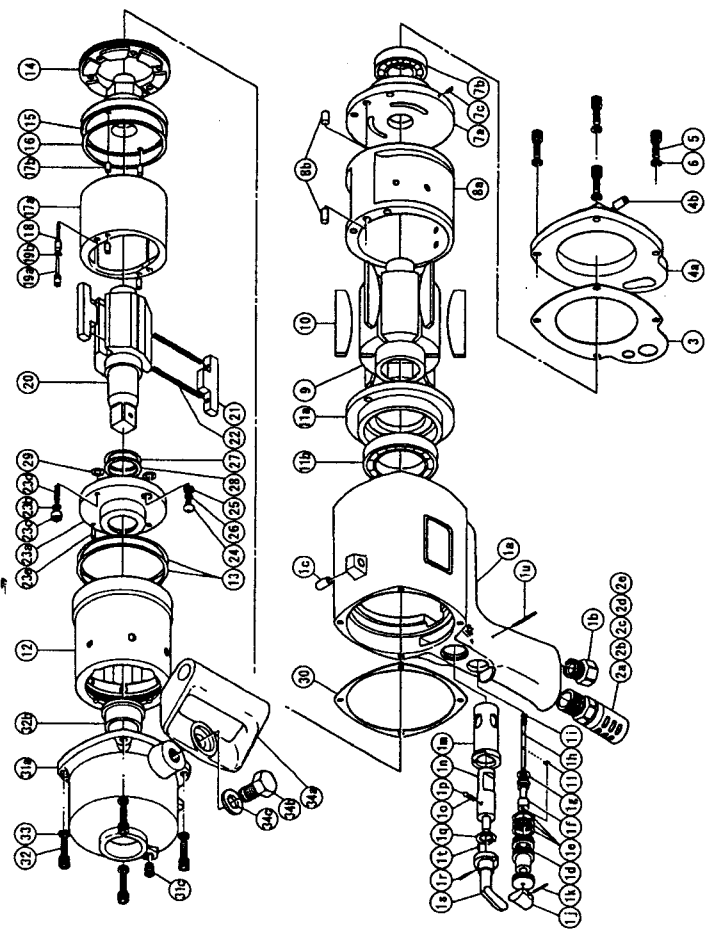


IMPULSE WRENCH

MODEL (YESNo.)	TOOL No.
YX-4500 (0.3)	0722 0000 0.3 00



■ PARTS LIST

No.	Name of Parts	Per set	Parts No.	Nb.	Name of Parts	Per set	Parts No.
1	Motor Case Assy.	1 set	0722 0011 0099	12	Liner Case	1	0722 0422 0000
	a)Motor Case	1	※ ↑	13	O-Ring N80	2	9010 4045 0000
	b)Hose Joint	1	0722 0113 0000	14	Liner Cap	1	0722 0423 0000
	c)S.R.Pin 8X12	1	9250 1110 0000	15	Liner Upper Plate	1	0722 0424 0000
	Throttle Bushing Assy.	1 set	0722 0104 0099	16	O-Ring N75	1	9010 4044 0000
	d)Throttle Bushing	1	※ ↑	17	Liner Assy.	1 set	0722 0425 0299
	e)O-Ring N16	3	9010 4009 0000		a)Liner	1	※ ↑
	Throttle Rod Bushing Assy.	1 set	0722 0105 0099		b)Pin 4.5X8 <41-44HRC>	4	8052 1035 0000
	f)Throttle Rod Bushing	1	※ ↑	18	Relief Valve	1	0722 0245 0000
	g)O-Ring No.6	1	9010 3005 0000	19	Spring Guide (B) Assy.	1 set	0722 0510 0099
	Throttle Rod Assy.	1 set	3038 0106 0099		a)Spring Guide B	1	※ ↑
	h)Throttle Rod	1	※ ↑		b)O-Ring N4	1	9010 4021 0000
	i)O-Ring N2	1	9010 4001 0000	20	Main Shaft	1	0722 0614 0101
	j)Throttle Knob	1	2024 0153 0000	21	Blade	2	0722 0719 0000
	k)S.R.Pin 1.5X14	1	9250 1005 0000	22	Spring 4.6X72	2	8020 1238 0000
	l)Snap Ring ETW-2.8	1	9040 5008 0000	23	Liner Lower Plate (A) Assy.	1 set	0722 0426 0198
	m)Reverse Bushing	1	0722 0004 0000		a)Liner Lower Plate	1	※ ↑
	n)Reverse Valve	1	0722 0005 0000		b)Nylon Bushing M5	1	0406 0431 0200
	o)Spring 4X6 N=3 0.5"	1	8020 1022 0000		c)Bushing	1	0406 0728 0000
	p)Ball M4 S	1	9150 1005 0000		d)Screw M5X16	1	9480 2025 0000
	q)Snap Ring IRTW-17	1	9040 3006 0000		e)S.R.Pin 4X8	1	9250 2024 0000
	r)S.R.Pin 2X12	1	9250 1015 0000	24	Hex. Button Bolt M5X8 P=0.8	1	8071 1011 0000
	s)Reverse Lever	1	0722 0007 0000	25	Washer 7.5X9.5X1.2	1	8040 1127 0000
	t)S.R.Pin 2X5	1	9250 1010 0000	26	O-Ring N5	1	9010 4033 0000
	u)Slotted Pin G 3X24	1	8410 6024 0000	27	O-Ring P28	1	9010 1042 0000
2	Silencer Assy.	1 set	0722 0053 0199	28	Back-Up Ring 28X34.2X1.2	1	9090 1009 0000
	a)Silencer	1	※ ↑	29	O-Ring N8	2	9010 4028 0000
	b)Silencer Cover	1	3048 0081 0200	30	S-Packing B	1	0722 0003 0002
	c)Silencer Sheet	1	0722 0032 0000	31	Hammer Case Assy.	1 set	0722 0401 0099
	d)Joint Ring	1	1105 0116 0000		a)Hammer Case	1	0722 0401 0000
	e)O-Ring N20	1	9010 4010 0000		b)Main Shaft Bushing	1	0722 0612 0000
3	S-Packing A	1	0722 0003 0001		c)Socket Plug Pt1/8	1	8210 2001 0000
4	Motor Case Cover Assy.	1 set	0722 0001 0099	32	Hex. Bolt M6X22X18	4	8070 3035 0000
	a)Motor Case Cover	1	※ ↑	33	Spring Washer M6	4	9200 3006 0000
	b)S.R.Pin 8X12	1	9250 1110 0000	34	Dead Handle Assy.	1 set	0722 0411 0099
5	Hex. Bolt M6X22X18	4	8070 3035 0000		a)Dead Handle	1	0722 0411 0000
6	Spring Washer M6	4	9200 3006 0000		b)Hex. Bolt M14X25	1	8070 1030 0000
7	Upper Plate Assy.	1 set	0722 0303 0099		c)Spring Washer M14	1	9200 2011 0000
	a)Upper Plate	1	0722 0303 0000		Standard Accessory		
	b)Ball Bearing 6005	1	9100 1052 0000		Touch Joint 3/8	1	9690 0006 0000
	c)S.R.Pin 3X6	1	9250 1043 0000		Hexagon Wrench H2.5X70X70	1	9610 1014 0000
8	Cylinder Assy.	1 set	0722 0304 0099		Hexagon Wrench H5	1	9610 1006 0000
	a)Cylinder	1	※ ↑				
	b)S.R.Pin 6X12	2	9250 1083 0000				
9	Rotor	1	0722 0305 0000				
10	Vane	6	0722 0306 0100				
11	Lower Plate Assy.	1 set	0722 0307 0099				
	a)Lower Plate	1	0722 0307 0000				
	b)Ball Bearing 6909	1	9100 1059 0000				

The part "※" can not be supplied individually.

So please order it as a unit of assembly shown by arrow mark ( ↑ ).

YOKOTA EUROPE BV

e-mail info@impulsetools.com <http://www.impulsetools.com>  
P.O. BOX 382 NL-1000 AJ AMSTERDAM PHONE: 020-625 29 53 FAX: 020-425 35 69  
Hydraulic Impulse Wrenches, Impact Wrenches, Drills, Grinders, Screw Drivers, Chippers, Scales, Pumps.

