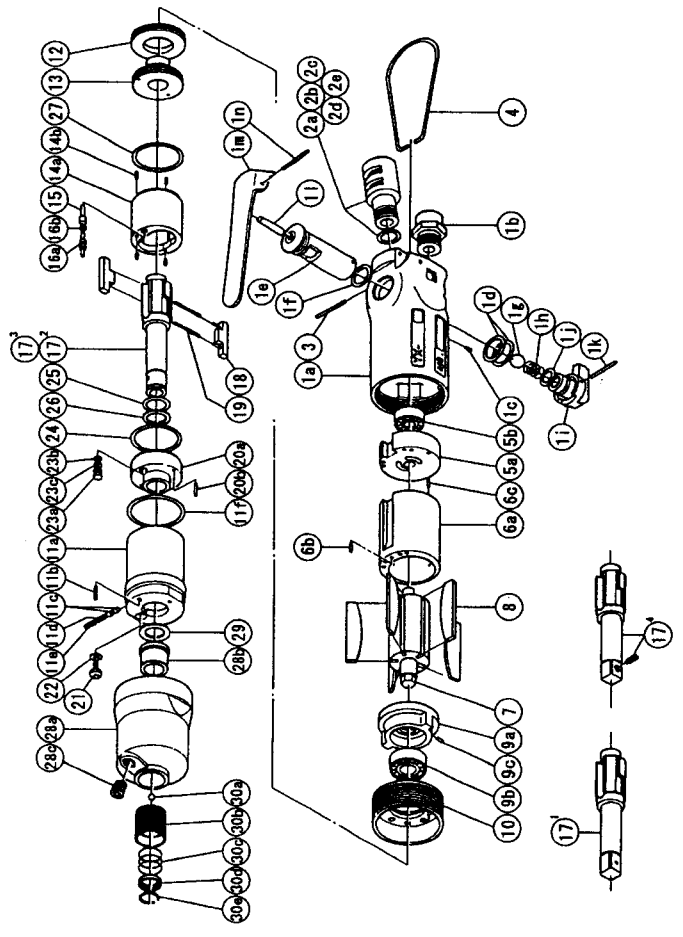




IMPULSE WRENCH


MODELS	(YESNo.)	TOOL No.
YX-180S	(05)	0088 0000 05 00
YX-180SA	(05)	0088 0000 05 01
YX-180SB	(05)	0088 0000 05 02
YX-180SE	(05)	0088 0000 05 04



PARTS LIST

No.	Name of Parts	Per set	Parts No.	No.	Name of Parts	Per set	Parts No.
1	Motor Case Assy.	1 set	0088 0011 0199	14	Liner Assy.	1 set	0136 0425 0199
	a) Motor Case	1	※ ↑		a) Liner	1	※ ↑
	b) Hose Joint	1	0237 0113 0000		b) AA Pin 2X5 <41-44HRC>	4	8052 3002 0000
	c) S.R.Pin 2X5	1	9250 1010 0000	15	Relief Valve	1	0088 0245 0000
	d) O-Ring N15	2	9010 4008 0000	16	Spring Guide (B) Assy.	1 set	0088 0510 0099
	Reverse Valve Assy.	1 set	0080 0005 0099		a) Spring Guide B	1	※ ↑
	e) Reverse Valve	1	※ ↑		b) O-Ring 0.7X2X3.4	1	9010 6020 0000
	f) O-Ring N12.5	1	9010 4006 0000	17	Main Shaft 3/8	1	0088 0614 0401
	g) Ball 5/16 R	1	9150 4002 0000	18	Blade	2	0088 0719 0300
	h) Spring 8X16	1	8020 1068 0000	19	Spring 3.1X20	2	8020 1296 0000
	Reverse Lever Assy.	1 set	0084 0007 0099	20	Liner Lower Plate Assy.	1 set	0158 0426 0099
	i) Reverse Lever	1	※ ↑		a) Liner Lower Plate	1	※ ↑
	j) O-Ring P8	1	9010 1006 0000		b) S.R.Pin 3X8	1	9250 2022 0000
2	Silencer Assy.	1 set	0081 0053 0099	21	Oil Plug	1	0081 0010 0100
	a) Silencer	1	※ ↑	22	O-Ring N3	1	9010 4025 0000
	b) O-Ring N10	1	9010 4004 0000	23	Oil Stop Cap Assy.	1 set	0081 0602 0099
	c) Silencer Sheet B	1	0095 0032 0002		a) Oil Stop Cap	1	※ ↑
	d) Silencer Cap	1	2306 0084 0000		b) O-Ring N2	1	9010 4001 0000
	e) Snap Ring RTW-14	1	9040 1006 0000		c) Back-Up Ring	1	9090 2001 0000
3	S.R.Pin 3X16	1	9250 1050 0000	24	O-Ring 1X25.2X27.2	1	9010 6012 0000
4	Hanger	1	0004 0017 0000	25	O-Ring 2.3X11.8X16.4	1	9010 6019 0000
5	Upper Plate Assy.	1 set	0081 0303 0199	26	Back-Up Ring 12X16X0.8	1	9090 1010 0000
	a) Upper Plate	1	0081 0303 0100	27	O-Ring 1.5X26.5X29.5	1	9010 6023 0000
	b) Ball Bearing 697MC2	1	9102 3001 0000	28	Hammer Case Assy.	1 set	0088 0401 0099
6	Cylinder Assy.	1 set	0088 0304 0199		a) Hammer Case	1	0088 0401 0000
	a) Cylinder	1	※ ↑		b) Main Shaft Bushing	1	0081 0612 0000
	b) S.R.Pin 2.5X6	1	9250 1030 0000		c) Socket Plug Pt1/8	1	8210 5001 0000
	c) S.R.Pin 2X12	1	9250 1015 0000	29	Washer 12.5X18X0.5	1	8041 5011 0000
7	Rotor	1	0088 0305 0000	29	Washer 12.5X18X1	1	8041 5021 0000
8	Vane	5	0088 0306 0100		Standard Accessories		
9	Lower Plate Assy.	1 set	0081 0307 0299		Universal Air Joint 1/4	1	9690 0015 0000
	a) Lower Plate	1	0081 0307 0200	17	Main Shaft	1	0088 0614 0351
	b) Ball Bearing 6900	1	9100 1048 0000	17	Main Shaft	1	0088 0614 0352
	c) Pin 2.5X6	1	8055 1053 0000	30	Bit Chuck Assy.	1 set	2057 0414 0099
10	Lower Plate Spacer	1	0084 0311 0000		a) Bit Chuck	1	2057 0414 0000
11	Liner Case (A) Assy.	1 set	0159 0422 0098		b) Ball 1/8 S	1	9150 3009 0000
	a) Liner Case	1	※ ↑		c) Spring 13.5X10	1	8020 1340 0000
	b) Screw M3X8 P=0.5	1	9480 2024 0000		d) Spring Washer	1	2331 0419 0000
	c) Rubber Plate	2	0081 0047 0000		e) Retaining Ring 10X1	1	8030 1009 0000
	d) Spring 2.4X6	1	8020 1267 0000		Parts for YX-180SE <05>		
	e) Screw M3X3 P=0.5	1	9480 2028 0000	17	Main Shaft 3/8 Assy.	1 set	0088 0614 0659
12	O-Ring N30	1	9010 4019 0000				
13	Liner Upper Plate	1	0081 0423 0100				
	Liner Upper Plate	1	0259 0424 0100				

The part "※" can not be supplied individually.
 So please order it as a unit of assembly shown by arrow mark (↑).
 *Marked parts; use one of them.



YOKOTA EUROPE BV
 e-mail info@impulsetools.com <http://www.impulsetools.com>
 P.O. BOX 392 NL-1000 AJ AMSTERDAM PHONE: 020-625 29 53 FAX: 020-625 35 69
 Hydraulic Impulse Wrenches, Impact Wrenches, Drills, Grinders, Screw Drivers, Chippers, Scales, Pumps.