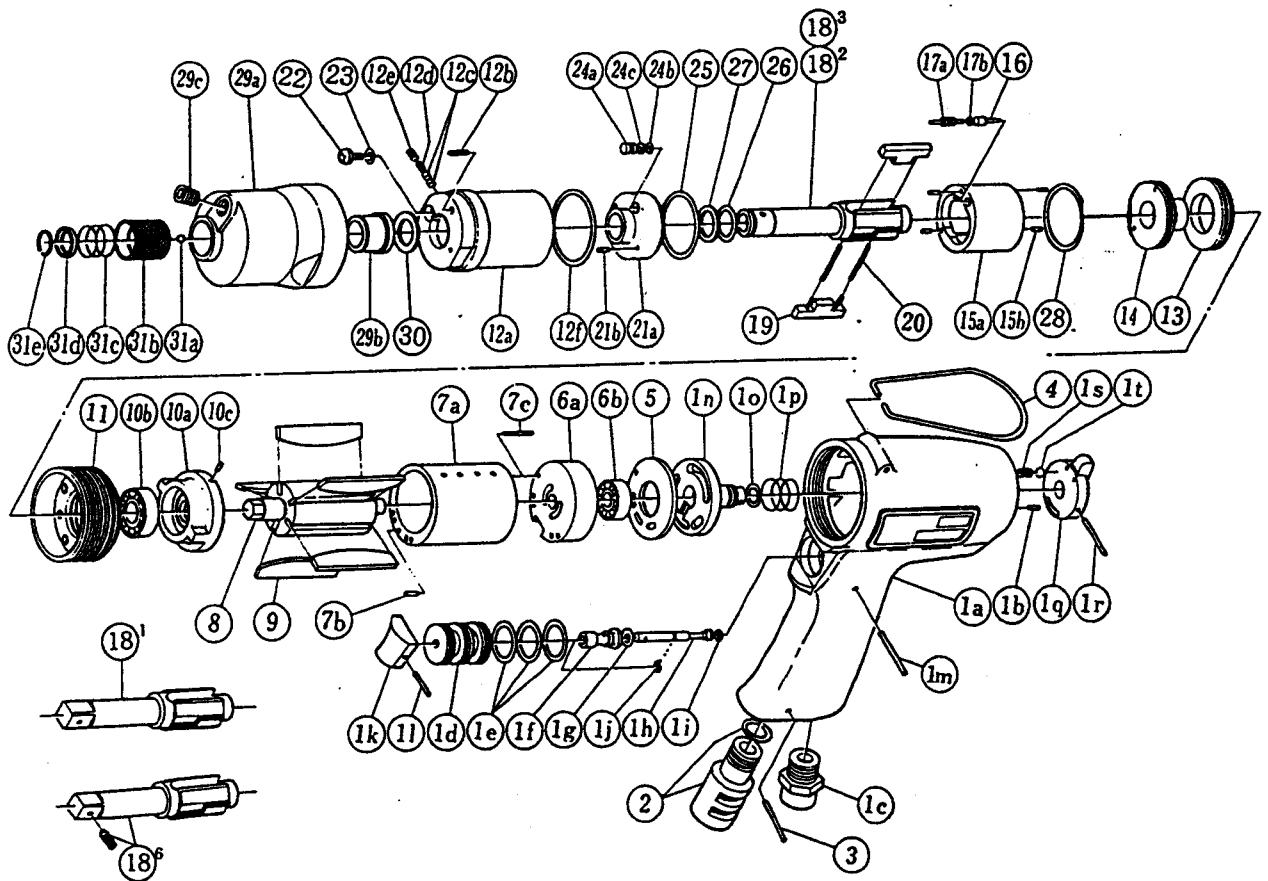


yokota
FA SYSTEM & AIR TOOLS

TWIN 2 BLADE IMPULSE WRENCHES

MODELS (YES. NO.)	TOOL NO.
YX-180 (04)	0089 0000 04 04
YX-180A (04)	0089 0000 04 01
YX-180B (04)	0089 0000 04 02

EXPLODED VIEW



YOKOTA EUROPA BV

P.O. BOX 392 NL-1000 AJ AMSTERDAM PHONE 020-625 29 53 FAX 020-625 35 69

Hydraulic Impulse Wrenches, Impact Wrenches, Drills, Grinders, Screwdrivers, Chippers, Scalars, Pumps.

PARTS LIST

No.	Name of Parts	Per Set	Parts No.	No.	Name of Parts	Per Set	Parts No.
1	Motor Case Assy.	1set	0089 0011 01 99	13	Liner Cap	1	0081 0423 01 00
	(a)Motor Case	1	0089 0011 01 00	14	Liner Upper Plate	1	0259 0424 01 00
	(b)Spring Roll Pin	1	9250 1043 00 00	15	Liner Assy.	1set	0136 0425 00 99
	(c)Hose Joint	1	0237 0113 00 00		(a)Liner	1	※ ↑
	Throttle Bushing Assy.	1set	2058 0104 00 99		(b)AA Pin	4	8051 3091 00 00
	(d)Throttle Bushing	1	※ ↑	16	Relief Valve	1	0088 0245 00 00
	(e)"O"Ring	3	9010 4008 00 00	17	Spring Guide(B) Assy.	1set	0088 0510 00 99
	Throttle Rod Bushing Assy.	1set	0078 0105 00 99		(a)Spring Guide(B)	1	※ ↑
	(f)Throttle Rod Bushing	1	※ ↑		(b)"O"Ring	1	9010 6020 00 00
	(g)"O"Ring	1	9010 3021 00 00	18 ¹	Main Shaft(A) YX-180A	1	0088 0614 03 51
	Throttle Rod Assy.	1set	2058 0106 00 99	18 ²	Main Shaft(B) YX-180B	1	0088 0614 03 52
	(h)Throttle Rod	1	※ ↑	18 ⁶	Main Shaft(P)Assy. YX-180	1set	0088 0614 05 59
	(i)"O"Ring	1	9010 4001 00 00	19	Blade	2	0088 0719 02 00
	(j)Snap Ring	1	9040 5008 00 00	20	Spring	2	8020 1244 00 00
	(k)Throttle Knob	1	2024 0153 00 00	21	Liner Lower Plate Assy.	1set	0081 0426 01 99
	(l)Spring Roll Pin	1	9250 1005 00 00		(a)Liner Lower Plate	1	※ ↑
	(m)G Pin	1	8410 6024 00 00		(b)Spring Roll Pin	1	9250 2022 00 00
	Reverse Valve Assy.	1set	2096 0005 00 99	22	Oil Plug	1	0081 0010 00 00
	(n)Reverse Valve	1	※ ↑	23	"O"Ring	1	9010 4025 00 00
	(o)"O"Ring	1	9010 1005 00 00	24	Oil Stop Cap Assy.	1set	0081 0602 00 99
	(p)Spring	1	8020 1209 00 00		(a)Oil Stop Cap	1	※ ↑
	(q)Reverse Lever	1	2014 0007 01 00		(b)"O"Ring	1	9010 4001 00 00
	(r)FF Pin	1	8055 1050 00 00	(c)Backup Ring	1	9090 2001 00 00	
(s)Spring	1	8020 1008 00 00	25	"O"Ring	1	9010 6012 00 00	
(t)Ball	1	9150 1003 00 00	26	"O"Ring	1	9010 6019 00 00	
2	Silencer Assy.	1set	0081 0053 00 99	27	Backup Ring	1	9090 1010 00 00
3	Spring Roll Pin	1	9250 1050 00 00	28	"O"Ring	1	9010 6023 00 00
4	Hanger	1	0004 0017 00 00	29	Hammer Case Assy.	1set	0088 0401 00 99
5	Upper Plate Spacer	1	2096 0301 00 00		(a)Hammer Case	1	0088 0401 00 00
6	Upper Plate Assy.	1set	0081 0303 01 99		(b)Main Shaft Bushing	1	0081 0612 00 00
	(a)Upper Plate	1	0081 0303 01 00	(c)Socket Plug	1	8210 5001 00 00	
	(b)Ball Bearing	1	9100 1060 00 00	30	Washer	1	8041 5011 00 00
7	Cylinder Assy.	1set	0089 0304 01 99	YX - 180A & 180B			
	(a)Cylinder	1	※ ↑	31	(a)Ball	1	9150 3009 00 00
	(b)Spring Roll Pin	1	9250 1030 00 00		(b)Bit Chuck	1	2057 0414 00 00
	(c)Spring Roll Pin	1	9250 1017 00 00		(c)Spring	1	8020 1137 00 00
8	Rotor	1	0088 0305 00 00		(d)Spring Washer	1	2057 0419 00 00
9	Vane	5	0088 0306 00 00		(e)Retaining Ring	1	8030 1009 00 00
10	Lower Plate Assy.	1set	0081 0307 02 99	Optional Parts			
	(a)Lower Plate	1	0081 0307 02 00	18 ¹	Main Shaft(3/8sq)	1	0088 0614 03 01
	(b)Ball Bearing	1	9100 1046 00 00				
	(c)FF Pin	1	8055 1053 00 00				
11	Lower Plate Spacer	1	0084 0311 00 00				
12	Liner Case(A) Assy.	1set	0088 0422 02 98				
	(a)Liner Case	1	※ ↑				
	(b)Screw	1	9480 2024 00 00				
	(c)Rubber Plate	2	0081 0047 00 00				
	(d)Spring	1	8020 1267 00 00				
	(e)Screw	1	9480 2028 00 00				
	(f)"O"Ring	1	9010 4019 00 00				

The part marked "※" can not be supplied individually. So please order it as a unit of assembly shown by arrow mark (↑).