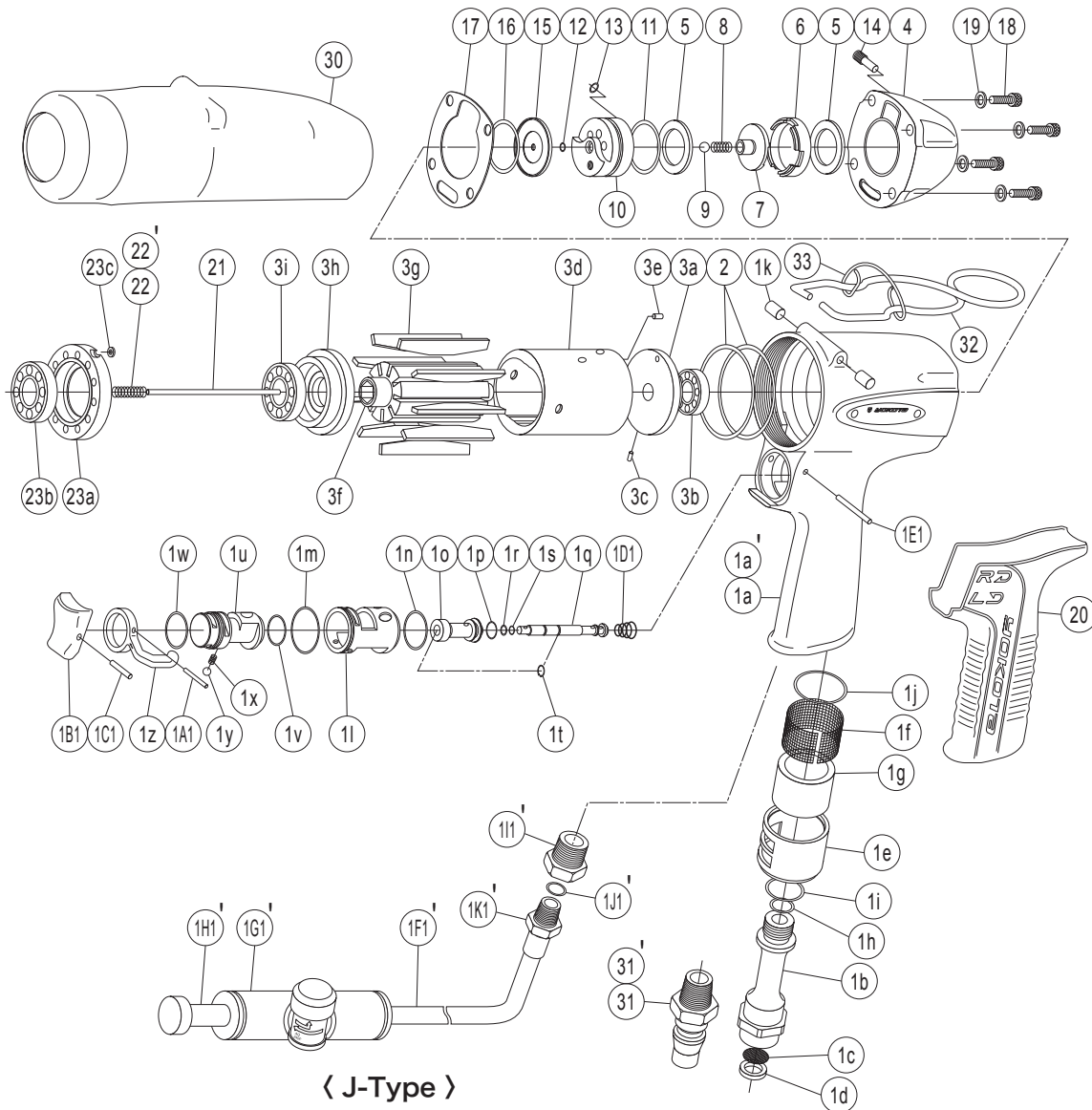


IMPULSE WRENCH

MODELS (YES.No.)	TOOL No.	MODELS (YES.No.)	TOOL No.
YLT110 (02)	0379 0000 0200	YLT110L (02)	0379 0000 0208
YLT110E (02)	0379 0000 0209	YLT110EL (02)	0379 0000 0284

Exploded View of Motor Case



Parts for Motor Case

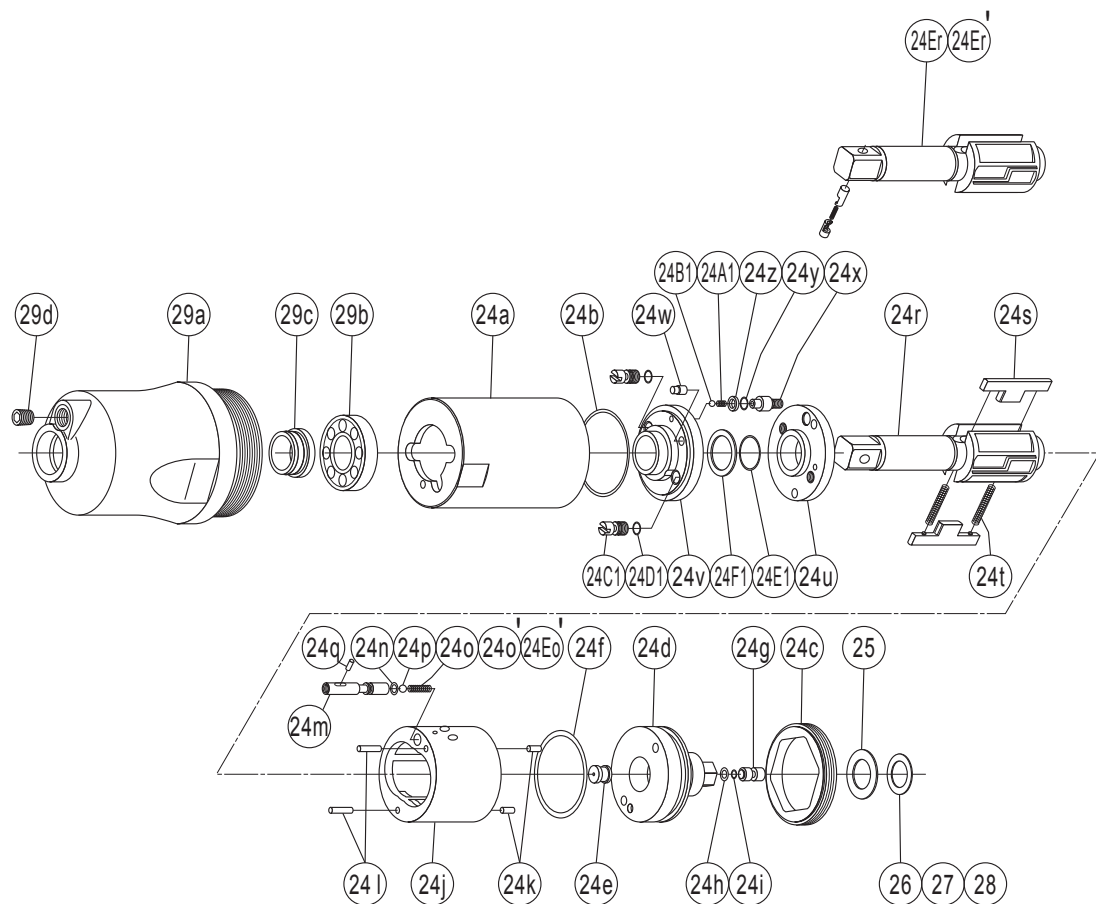
No.	Name of Parts	Per Set	Parts No.	No.	Name of Parts	Per Set	Parts No.
1	Motor Case Assy.	1set	0379 0011 00 99	4	Motor Case Cover	1	0379 0001 00 00
	(a) Motor Case	1	※ ↑	5	Back-up Ring (19x26x1.5)	2	9090 1035 00 00
	Hose Joint Assy.	1set	0187 0113 00 99	6	Buffer Plate	1	0379 0297 01 00
	(b) Hose Joint	1	※ ↑	7	Shut Off Valve	1	0379 0295 00 00
	(c) Strainer	1	0259 0111 00 00	8	Spring (3.95x8.4)	1	8020 1382 00 00
	(d) Washer (7.5x11x2)	1	8042 2008 00 00	9	Ball (4mm)	1	9150 1005 00 00
	(e) Exhaust Cover	1	0379 0016 00 00	10	Shut Off Valve Bushing	1	0379 0296 01 00
	(f) Silencer Sheet (A)	1	0141 0032 00 01	11	O-Ring (S22)	1	9010 4011 00 00
	(g) Silencer Sheet (D)	1	0187 0032 00 04	12	O-Ring (N2)	1	9010 4001 00 00
	(h) O-Ring (S10)	1	9010 4004 00 00	13	O-Ring (1.4x2.16x4.96)	1	9010 6068 00 00
	(i) O-Ring (S16)	1	9010 4009 00 00	14	Valve Plug	1	0379 0298 00 00
	(j) O-Ring (1x20x22)	1	9010 6043 00 00	15	Upper Plate Spacer	1	0379 0301 00 00
	(k) Spring Pin (5x8)	2	9250 2027 00 00	16	O-Ring (S22)	1	9010 4011 00 00
	Throttle Assy.	1set	0379 0186 00 99	17	S-Packing	1	0379 0003 00 00
	(l) Throttle Bushing	1	0187 0104 00 00	18	Hexagon Socket Bolt (M4x10)	4	8070 3159 00 00
	(m) O-Ring (0.7x19.6x21)	1	9010 6038 00 00	19	Washer (4x6.6x1.2)	4	8041 6016 00 00
	(n) O-Ring (S18)	1	9010 4023 00 00	20	Rubber Grip	1	0188 0144 00 00
	Throttle Rod Bushing Assy.	1set	0187 0105 00 99	21	Rod	1	0379 1368 01 00
	(o) Throttle Rod Bushing	1	※ ↑	22	Spring (5.1x22.1)	1	8020 1416 00 00
	(p) O-Ring (P8)	1	9010 1048 00 00	23	Lower Plate Spacer Assy.	1set	0379 0311 00 99
	Throttle Rod Assy.	1set	0187 0106 01 99		(a) Lower Plate Spacer	1	0379 0311 00 00
	(q) Throttle Rod	1	0187 0106 01 00		(b) Ball Bearing (6802)	1	9100 1063 00 00
	(r) O-Ring (0.5x3.7x4.7)	1	9010 6034 00 00		(c) Washer (WSSB4-2-2)	1	8041 6015 00 00
	(s) O-Ring (S4)	1	9010 4058 00 00	Parts for YLT110L·110EL			
	(t) Snap Ring (ETW-2.8)	1	9040 5008 00 00	22'	Spring (5.1x21.5)	1	8020 1417 00 00
	(u) Reverse Valve	1	0379 0005 00 00	Special Common Parts for J Type			
	(v) O-Ring (0.6x16x17.2)	1	9010 6039 00 00	1'	Motor Case Assy.	1set	0379 0011 02 98
	(w) O-Ring (S15)	1	9010 4008 00 00		(a) Motor Case(A)	1	※ ↑
	(x) Spring (3x4)	1	8020 1246 00 00		(F1) Tube (4x2.5x150mm)	1	9380 6037 00 00
	(y) Ball (1/8)	1	9150 3009 00 00		(G1) Tube Joint	1	9643 4002 00 00
	(z) Reverse Lever	1	2331 0007 00 00		(H1) Blank Plug	1	9641 3006 00 00
	(A1) Spring Pin (2x12)	1	9250 1015 00 00		(I1) Bushing	1	0371 0728 01 00
	(B1) Throttle Knob	1	0158 0153 00 00		(J1) O-Ring (1.19x1.78x4.16)	1	9010 6074 00 00
	(C1) Spring Pin (1.5x14)	1	9250 1005 00 00		(K1) Straight One Touch Joint	1	9643 3004 00 00
	(D1) Conical Spring (5.24x7.6x7)	1	8020 3070 00 00	Standard Accessories			
	(E1) Pin (2x22)	1	8055 1050 00 00	30	Protector	1	0379 0029 00 00
2	O-Ring (S42)	2	9010 4018 00 00	31*	Touch Joint	1	9690 0002 00 00
3	Motor Assy.	1set	0379 0305 00 99	31'*	Hose Nipple Assy.(XA-352)	1set	8110 1004 00 99
	Upper Plate Assy.	1set	0379 0303 00 99	32	Hanger	1	0099 0017 00 00
	(a) Upper Plate	1	0379 0303 00 00	33	Hanger Clip	1	0190 1801 00 00
	(b) Ball Bearing (6900CM)	1	9102 1001 00 00		Hex. Wrench (H1.5x65x65)	1	9610 1012 00 00
	(c) Pin (2x5)	1	8055 1040 00 00		Hex. Wrench (H5/32)	1	9610 3008 00 00
	Cylinder Assy.	1set	0379 0304 00 99				
	(d) Cylinder	1	※ ↑				
	(e) Pin (2.5x6)	1	8055 1053 00 00				
	(f) Rotor	1	0379 0305 00 00				
	(g) Vane	9	0379 0306 01 00				
	Lower Plate Assy.	1set	0379 0307 00 99				
	(h) Lower Plate	1	0379 0307 00 00				
	(i) Ball Bearing (6902CM)	1	9102 1004 00 00				

The part "※" can not be supplied individually. So please order it as a unit of assembly shown by arrow mark (↑).
 ☆marked parts ; use one of them.

IMPULSE WRENCH

MODELS (YES.No.)	TOOL No.	MODELS (YES.No.)	TOOL No.
YLT110 (02)	0379 0000 0200	YLT110L (02)	0379 0000 0208
YLT110E (02)	0379 0000 0209	YLT110EL (02)	0379 0000 0284

Exploded View of Liner Case and Hammer Case



Parts for Liner Case and Hammer Case

No.	Name of Parts	Per Set	Parts No.	No.	Name of Parts	Per Set	Parts No.
24	Liner Case Assy.	1set	0379 0422 01 99	25	Washer (11.6x19.2x1)	1	8040 6036 00 00
	(a) Liner Case	1	0379 0422 00 00	26*	ST-Packing (11.6x19.2x0.1)	1	8012 1124 00 00
	(b) O-Ring (1.6x35.1x38.3)	1	9010 6037 00 00	27*	ST-Packing (11.6x19.2x0.2)	1	8012 1125 00 00
	(c) Liner Cap	1	0379 0423 00 00	28*	ST-Packing (11.6x19.2x0.3)	1	8012 1126 00 00
	(d) Liner Upper Plate	1	※ ↑	29	Hammer Case Assy.	1set	0379 0401 00 99
	(e) Liner Upper Plate(A)	1	0379 0424 00 01		(a) Hammer Case	1	0379 0401 00 00
	(f) O-Ring (1.78x34.65x38.21)	1	9010 6069 00 00		(b) Ball Bearing (6074)	1	9100 1082 00 00
	(g) Sensor	1	0379 0794 01 00		(c) Main Shaft Bushing	1	0379 0612 00 00
	(h) O-Ring (1.19x3.66x6.04)	1	9010 6080 00 00		(d) Socket Plug (1/16-27)	1	8210 4001 00 00
	(i) O-Ring (N4)	1	9011 0014 00 00	Parts for YLT110L			
	Liner Assy.	1set	0379 0425 00 99	24'	Liner Case Assy.	1set	0379 0422 01 94
	(j) Liner	1	※ ↑		(o) Spring (3x8.4)	1	8020 1381 00 00
	(k) Pin (3x5)	2	8052 1031 00 00	Parts for YLT110E			
	(l) Pin (3x9)	2	8052 1052 00 00	24E	Liner Case Assy.	1set	0379 0422 01 95
(m) Relief Valve	1	0379 0245 01 00	(r) Main Shaft Assy. (E-type)		1set	0379 0614 01 98	
(n) O-Ring (0.69x3.38x4.76)	1	9010 6070 00 00	Parts for YLT110EL				
(o) Spring (3.2x8.1)	1	8020 1380 00 00	24E'	Liner Case Assy.	1set	0379 0422 01 91	
(p) Ball (3mm)	1	9150 1003 00 00		(o) Spring (3x8.4)	1	8020 1381 00 00	
(q) Pin (2x4)	1	8051 1035 00 00	(r) Main Shaft Assy. (E-type)	1set	0379 0614 01 98		
(r) Main Shaft	1	0379 0614 01 01					
(s) Blade	2	0187 0719 00 00					
(t) Spring (3.55x31.5)	2	8020 1350 00 00					
(u) Liner Lower Plate(A)	1	0379 0426 00 01					
Liner Lower Plate(B) Assy.	1set	0379 0426 00 99					
(v) Liner Lower Plate(B)	1	0379 0426 00 02					
(w) Dowel Pin	1	0188 0308 00 00					
(x) Adjust Bolt	1	0379 0522 00 00					
(y) O-Ring (N2)	1	9010 4001 00 00					
(z) Back-up Ring (3.2x5x1)	1	9090 1028 00 00					
(A1) Spring (1.9x2.5)	1	8020 1365 00 00					
(B1) Ball (2mm)	1	9150 1001 00 00					
(C1) Oil Plug	2	0181 0010 00 00					
(D1) O-Ring (N2)	2	9010 4001 00 00					
(E1) O-Ring (P16)	1	9010 1047 00 00					
(F1) Back-up Ring (16x19.8x1)	1	9090 1029 00 00					

The part "※" can not be supplied individually. So please order it as a unit of assembly shown by arrow mark (↑).
 ☆marked parts ; use one of them.