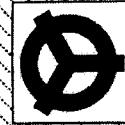
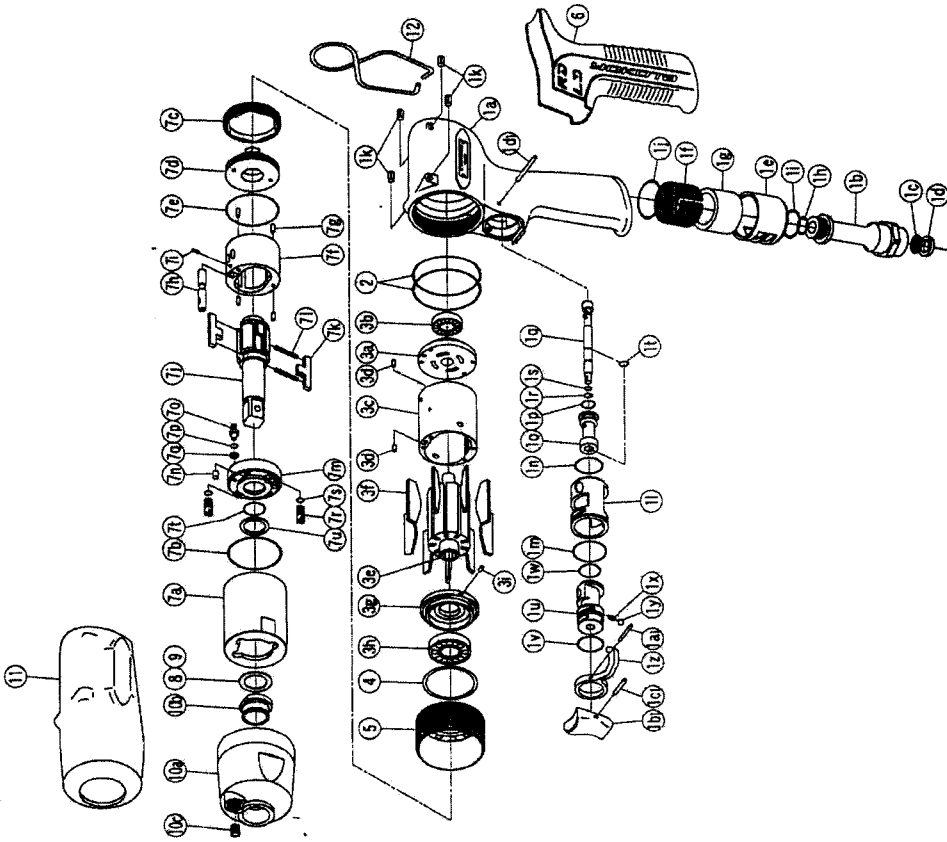




# IMPULSE WRENCH

MODEL (YES.No.)	TOOL No.
YL110 (00)	0190 0000 0000

Exploded View



# YOKOTA EUROPA BV

P.O. BOX 382 NL-1000 AJ AMIS TERPAAI, PHOENIX-020-531-9800 FAX-020-531-8806  
 e-mail info@impulsetools.com http://www.impulsetools.com  
 Hydraulic Impulse Wrenches, Impact Wrenches, Drills, Compressors, Safety Drivers, Chippers, Spacers, Planers.

## Parts List

No.	Name of Parts	Per Set	Parts No.
1	Motor Case Assy.	1set	0190 0011 00 99
	(a) Motor Case	1	0187 0113 00 99
	Hose Joint Assy.	1set	0187 0113 00 99
	(b) Hose Joint	1	0259 0111 00 00
	(c) Strainer	1	8042 2008 00 00
	(d) Washer (7.5X11X2)	1	0334 0016 00 00
	(e) Exhaust Cover	1	0141 0032 00 01
	(f) Silencer Sheet (A)	1	0187 0032 00 04
	(g) Silencer Sheet (D)	1	9010 4004 00 00
	(h) O - Ring (N10)	1	9010 4008 00 00
	(i) O - Ring (N16)	1	9010 6043 00 00
	(j) O - Ring (1x20x22)	1	9250 2027 00 00
	(k) Spring Pin (5X8)	4	0187 0186 00 99
	Throttle Assy.	1set	0187 0104 00 00
	(l) Throttle Bushing	1	9010 6038 00 00
	(m) O - Ring (0.7X19.6X21)	1	9010 4023 00 00
	(n) O - Ring (N18)	1	0187 0105 00 99
	Throttle Rod Bushing Assy.	1set	0187 0105 00 99
	(o) Throttle Rod Bushing	1	9010 1048 00 00
	(p) O - Ring (P8)	1set	0187 0106 00 00
	Throttle Rod Assy.	1	0158 0007 00 00
	(q) Throttle Rod	1	9010 6034 00 00
	(r) O - Ring (0.5X3.7X4.7)	1	9010 4658 00 00
	(s) O - Ring (N4)	1	9040 5008 00 00
	(t) Snap Ring (ETW-2.8)	1	0187 0005 01 00
	(u) Reverse Valve	1	9010 6039 00 00
	(v) O - Ring (0.8X16X17.2)	1	9010 4008 00 00
	(w) O - Ring (N15)	1	8020 1248 00 00
	(x) Spring (3X4)	1	9150 3009 00 00
	(y) Ball (1/8)	1	0158 0007 00 00
	(z) Reverse Lever	1	9250 1015 00 00
	(a) Spring Pin (2X12)	1	0158 0153 00 00
	(b) Throttle Knob	1	9250 1005 00 00
	(c) Spring Pin (1.5X14)	1	8055 1050 00 00
	(d) Pin (2X22)	2	9010 4018 00 00
2	O - Ring (N42)	2	0187 0305 00 99
3	Motor Assy.	1set	0187 0303 00 99
	Upper Plate Assy.	1set	0187 0303 00 99
	(a) Upper Plate	1	0187 0303 00 00
	(b) Ball Bearing (6900CM)	1	9102 1001 00 00
	Cylinder Assy.	1set	0187 0304 00 99
	(c) Cylinder	1	8055 1053 00 00
	(d) Pin (2.5X6)	2	0187 0305 00 00
	(e) Rotor	9	0187 0306 00 00
	(f) Vane	1set	0187 0307 00 99
	Lower Plate Assy.	1	0187 0307 00 99
	(g) Lower Plate	1	9102 1004 00 00
	(h) Ball Bearing (6902CM)	1	8055 1040 00 00
	(i) Pin (2X5)	1	8011 1105 00 00
4	ST - Packing (32X37X0.2)	1	0190 0311 00 00
5	Lower Plate Spacer	1	0188 0144 00 00
6	Rubber Grip	1	0188 0144 00 00

No.	Name of Parts	Per Set	Parts No.
7	Liner Case Assy.	1set	0190 0422 00 99
	(a) Liner Case	1	0190 0422 00 00
	(b) O - Ring (1.6X35.1X38.3)	1	0187 0423 00 00
	(c) Liner Cap	1	0187 0424 00 00
	(d) Liner Upper Plate	1	9011 3004 00 00
	(e) O - Ring (JASO 1033)	1	0187 0425 01 99
	Liner Assy.	1set	0187 0425 01 99
	(f) Liner	1	8052 1031 00 00
	(g) Pin (3X5 41-44 HRC)	4	0187 0245 00 00
	(h) Relief Valve	1	8051 1035 00 00
	(i) Pin (2X4)	1	0190 0614 00 01
	(j) Main Shaft	2	0187 0719 00 00
	(k) Blade	2	8020 1350 00 00
	(l) Spring (3.55X31.5)	2	0190 0426 00 99
	Liner Lower Plate Assy.	1set	0190 0426 00 99
	(m) Liner Lower Plate	1	0188 0522 00 00
	(n) Pin (3X5 41-44 HRC)	1	9090 1028 00 00
	(o) Adjust Bolt (N2)	1	0181 0010 00 00
	(p) O - Ring (3.2X5X1)	2	9010 4001 00 00
	(q) Back-up Ring (16.5X22X0.5)	1	8041 5039 00 00
	(r) Oil Plug (N2)	2	0190 1047 00 00
	(s) O - Ring (P16)	1	9090 1029 00 00
	(t) Back-up Ring (16.5X22X0.3)	1	8041 5038 00 00
8	Washer (16.5X22X0.5)	1	8041 5039 00 00
9	Hammer Case Assy.	1set	0190 0401 00 99
	(a) Hammer Case	1	0190 0401 00 00
	(b) Main Shaft Bushing	1	0190 0612 00 00
	(c) Socket Plug (1/16-27)	1	8210 4001 00 00

No.	Name of Parts	Per Set	Parts No.
11	Protector	1	0190 0029 00 00
12	Hanger	1	0188 0017 00 00
	Hex. Wrench (H1.5X65X66)	1	9610 1012 00 00
	Hex. Wrench (H15/32)	1	9610 3008 00 00

The part "\*" can not be supplied individually.

So please order it as a unit of assembly shown by arrow mark (↑).

\* marked parts: use one of them.