

Parts for Motor Case

No.	Name of Parts	Per set	Parts No.	No.	Name of Parts	Per set	Parts No.
M	Motor Case Assy.	1 set	0260 0011 01 99	A12	Lower Plate Assy.	1 set	0943 0307 00 99
M1	Motor Case (A) Assy.	1 set	0078 0011 00 98		a) Lower Plate	1	0943 0307 00 00
	Motor Case (B) Assy.	1 set	0078 0011 00 97		b) Ball Bearing 6902	1	9100 1038 00 00
A1	Motor Case	1	*		c) S.R.Pin 2X5	1	9250 6001 00 00
	a) Motor Case	1	9480 1010 00 00	M2	Holder Assy.	1 set	0407 0717 00 99
	b) Screw M5X8 P=0.8	1 set	2058 0104 00 99	M3	Contraction Tube 3'X15	1	9380 5007 00 00
	Throttle Bushing Assy.	1	*	M4	Contraction Tube 1.5'X10	4	9380 5008 00 00
	c) Throttle Bushing	1	9010 4008 00 00	M5	Micro Connector PM-10	1	8500 2001 00 00
	d) O-Ring N15	3	0078 0105 00 99	M6	Socket Connector 170205-1	2	8480 1001 00 00
	Throttle Rod Bushing Assy.	1	*	M7	Socket Housing 171822-2	1	8470 1001 00 00
	e) Throttle Rod Bushing	1	9010 3021 00 00	M8	Buzzer Basic Assy.	1 set	0127 0798 00 98
	f) O-Ring No.3 (Hs90)	1	2058 0106 01 99	M9	Cover	1	0078 0708 00 00
	Throttle Rod Assy.	1	*	M10	+ Screw M3X5	2	9400 2019 00 00
	g) Throttle Rod	1	9010 4001 00 00				
	h) O-Ring N2	1	2024 0153 00 00				
	i) Throttle Knob	1	9250 1005 00 00				
	j) S.R.Pin 1.5X14	1	9040 5008 00 00				
	k) Snap Ring ETW-2.8	1	0048 0004 01 00				
	l) Reverse Bushing	1	0048 0005 01 00				
	m) Reverse Valve	1	8020 1004 00 00				
	n) Spring 3X10 N=7 0.5	1	9150 3009 00 00				
	o) Ball 1/8 S	1	9040 3002 00 00				
	p) Snap Ring IRTW-12	1	0048 0007 01 00				
	q) Reverse Lever	1	9250 1049 00 00				
	r) S.R.Pin 3X14	1	9250 1082 00 00				
	s) S.R.Pin 6X10	1	0078 0113 00 00				
A2	Hose Joint	1 set	0405 0053 01 99				
A3	Silencer Assy. PF3/8	1	*				
	a) Silencer Body PF3/8	1	3048 0081 02 00				
	b) Silencer Cover	1	0405 0032 00 00				
	c) Silencer Sheet	1	1105 0116 00 00				
	d) Joint Ring	1	9010 4010 00 00				
	e) O-Ring N20	1	0127 0003 00 01				
A4	S-Packing A	1	0127 0001 00 00				
A5	Motor Case Cover	3	8070 3050 00 00				
A6	Hex. Bolt M5X14 P=0.8	3	9200 3005 00 00				
A7	Spring Washer M5	3	0943 0303 00 99				
A8	Upper Plate Assy.	1	0943 0303 00 00				
	a) Upper Plate	1	9100 1004 00 00				
	b) Ball Bearing 608	1	9250 6001 00 00				
	c) S.R.Pin 2X5	2	0048 0304 00 00				
A9	Cylinder	1	0071 0305 00 00				
A10	Rotor	1	0048 0306 00 00				
A11	Vane	6					

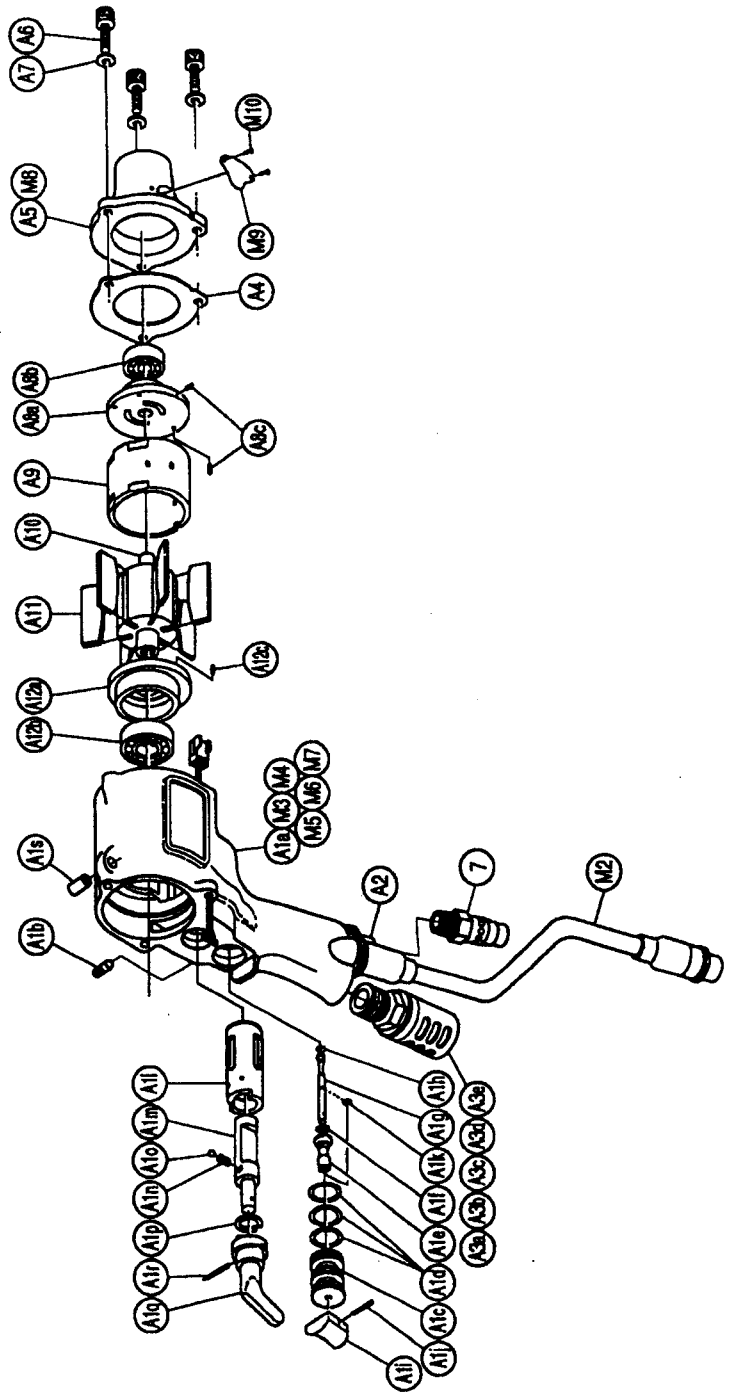
The part \* can not be supplied individually.  
So please order it as a unit of assembly  
shown by arrow mark (1).

026002-Y0301



SYSTEM WRENCH

MODELS	(YES/No.)	TOOL No.
YEX-501	(02)	0260 0000 02 00
YEX-501A	(02)	0260 0000 02 01



**YOKOTA EUROPE BV**  
 e-mail info@impulsetools.com http://www.impulsetools.com  
 P.O. BOX 982 NL-1000 AJ AMSTERDAM PHONE: 020-625 29 53 FAX: 020-625 35 69  
 Hydraulic Impact Wrenches, Impact Wrenches, Drills, Grinders, Screw Drivers, Chippers, Scales, Pumps.



Parts for Liner Case

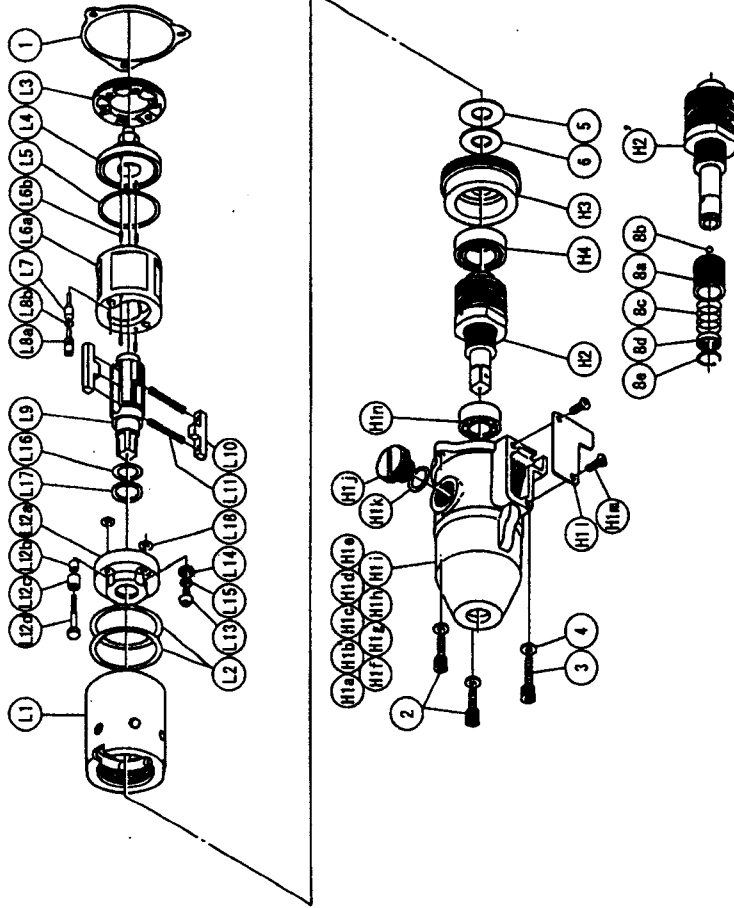
No.	Name of Parts	Per set	Parts No.
L1	Liner Case Assy.	1 set	0078 0422 03 99
L2	Liner Case	1	0078 0422 00 00
L3	O-Ring N38	2	9010 4018 00 00
L4	Liner Cap	1	0048 0423 00 00
L5	Liner Upper Plate	1	0077 0424 00 00
L6	O-Ring N32	1	9010 4014 00 00
L7	Liner Assy.	1 set	0077 0425 03 99
L8	a)Liner	1	※ 1
L9	b)Pin 3X5 <41-44HRC>	4	8052 1031 00 00
L10	Relief Valve	1	0077 0245 00 00
L11	Spring Guide (B) Assy.	1 set	0077 0510 00 99
L12	a)Spring Guide B	1	※ 1
L13	b)O-Ring N2	1	9010 4001 00 00
L14	Liner Shaft	1	0078 0798 01 00
L15	Blade	2	0077 0719 01 00
L16	Double Spring	2	8020 1310 00 00
L17	Spring 3.6X29.5	2	8020 1309 00 00
L18	Spring 2.4X29.5	2	8020 1309 00 00
L19	Liner Lower Plate (A) Assy.	1 set	0078 0428 03 98
L20	a)Liner Lower Plate	1	※ 1
L21	b)Nylon Bushing M3	1	0260 0431 00 00
L22	c)Bushing	1	0260 0728 00 00
L23	d)Adjust Bolt	1	0078 0522 01 00
L24	Oil Plug M4	1	0048 0010 00 00
L25	Washer 6.5X8.5X1.1	1	8040 1073 00 00
L26	O-Ring N4	1	9010 4021 00 00
L27	O-Ring 2.8X12.8X1.8.4 Hs70	1	9010 6014 00 00
L28	Back-Up Ring 13X18X0.6	1	9090 1005 00 00
L29	O-Ring N5	2	9010 4033 00 00
L30	S-Packing B	1	0127 0003 00 02

The part "※" can not be supplied individually.  
 So please order it as a unit of assembly  
 shown by arrow mark (↑).

SYSTEM WRENCH

MODEL (YES No.)	TOOL No.
YEX-501 (02)	0260 0000 02 00
YEX-501A (02)	0260 0000 02 01

Exploded View of Liner Case and Hammer Case



Parts For Hammer Case

No.	Name of Parts	Per set	Parts No.
H1	Hammer Case Assy.	1 set	0260 0401 01 99
H2	Hammer Case Assy. (1)	1 set	0260 0401 01 69
H3	a)Hammer Case	1	※ 1
H4	b)Core A Assy.	1 set	※ 1
H5	c)Core B	1	※ 1
H6	d)Spacer A	1	※ 1
H7	e)Core C	1	※ 1
H8	f)Core D Assy.	1 set	※ 1
H9	g)Screw M4X5 P=0.7	1	9480 1006 00 00
H10	h)Contraction Tube 1.5"X9	4	9380 5010 00 00
H11	i)Micro Connector OX-202	4	8500 4001 00 00
H12	j)Regulator Cap	1	0143 0204 00 00
H13	k)O-Ring N12	1	9010 4005 00 00
H14	l)Cover Plate	1	0143 0014 00 00
H15	m)+ Screw M4X8 P=0.7	2	9410 2004 00 00
H16	n)Ball Bearing 6901ZZ	1	9100 5026 00 00
H17	Main Shaft Assy.	1 set	0127 0814 00 99
H18	Bearing Case	1	0127 0650 00 00
H19	Ball Bearing 6903ZZ	1	9100 5025 00 00
H20	Hex. Bolt M4X14 P=0.7	2	8070 3008 00 00
H21	Hex. Bolt M4X22 P=0.7	3	9200 3004 00 00
H22	Washer 12.3X21X2.8	1	8040 8027 00 00
H23	Washer 12.5X21X0.5	1	8041 5033 00 00
H24	Touch Joint 1/4-07	1	9890 0007 00 00
H25	Standard Accessories		
H26	TF Pin 2X90	1	8051 8001 00 00
H27	Protector	1	0260 0029 00 00
H28	Parts for YEX-501A <02>		
H29	Hammer Case Assy.	1 set	0260 0401 00 89
H30	Main Shaft Assy.	1 set	0078 0614 00 89
H31	Bit Chuck Assy.	1 set	2057 0414 00 99
H32	a)Bit Chuck	1	2057 0414 00 00
H33	b)Ball 1/8 S	1	9150 3009 00 00
H34	c)Spring 13.5X10	1	8020 1340 00 00
H35	d)Spring Washer	1	2331 0419 00 00
H36	e)Retaining Ring 10X1	1	8030 1009 00 00

The part "※" can not be supplied individually.  
 So please order it as a unit of assembly  
 shown by arrow mark (↑).



YOKOTA EUROPE BV

e-mail info@impulsetools.com http://www.impulsetools.com  
 P.O. BOX 392 NL-1000 AJ AMSTERDAM PHONE: 020-625 29 53 FAX: 020-625 35 69  
 Hydraulic Impulse Wrenches, Impact Wrenches, Drills, Grinders, Screw Drivers, Chippers, Saws, Pumps.