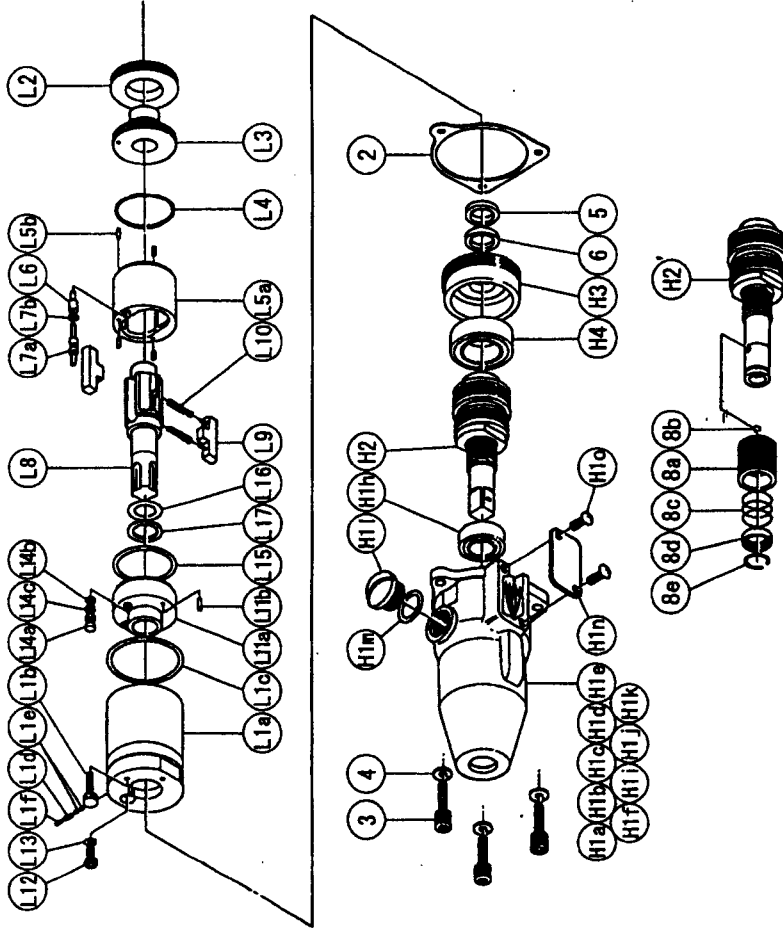




SYSTEM WRENCH

MODEL (YESNo.)	TOOL No.
YEX-150S (03)	0099 0000 03 00
YEX-150SA (03)	0099 0000 03 01

Exploded View of Liner Case and Hammer Case



No.	Name of Parts	Per set	Parts No.
L1	Liner Case Assy.	1 set	0093 0422 0899
L1	Liner Case (A) Assy.	1 set	0093 0422 0388
L1	Liner Case	※	↑
L1	a) Liner Case	1	0093 0522 0100
L1	b) Adjust Bolt M3X8 P=0.5	1	9010 4019 00 00
L1	c) O-Ring N30	1	8020 1287 00 00
L1	d) Spring 2.4X6	2	0081 0047 00 00
L1	e) Rubber Plate	1	9480 2028 00 00
L1	f) Screw M3X3 P=0.5	1	0081 0423 01 00
L1	Liner Cap	1	0259 0424 01 00
L2	Liner Upper Plate	1	9010 8023 00 00
L3	O-Ring 1.5X26.5X29.5	1 set	0138 0425 01 99
L4	Liner Assy.	※	↑
L4	a) Liner	4	8052 3002 00 00
L4	b) AA Pin 2X5 <41-44HRC>	1	0088 0245 00 00
L4	Relief Valve	1 set	0088 0510 00 99
L5	Spring Guide (B) Assy.	1	※
L5	a) Spring Guide B	1	9010 8020 00 00
L5	b) O-Ring 0.7X2X3.4	1	0079 0798 02 00
L5	Liner Shaft	2	0088 0719 03 00
L5	Blade	2	8020 1298 00 00
L5	Spring 3.1X20	1 set	0158 0428 00 99
L5	Liner Lower Plate Assy.	※	↑
L5	a) Liner Lower Plate	1	9250 2022 00 00
L5	b) S.R.Pin 3X8	1	0081 0010 01 00
L5	Oil Plug	1	9010 4025 00 00
L5	O-Ring N3	1 set	0081 0602 00 99
L5	Oil Stop Cap Assy.	※	↑
L5	a) Oil Stop Cap	1	9010 4001 00 00
L5	b) O-Ring N2	1	9090 2001 00 00
L5	Back-Up Ring	1	9010 8012 00 00
L5	O-Ring 1X25.2X27.2	1	9010 8019 00 00
L5	O-Ring 2.3X11.8X16.4	1	9090 1010 00 00
L5	Back-Up Ring 12X16X0.8	1	0093 0003 00 00
L5	S-Packing	1	

The part "※" can not be supplied individually.
So please order it as a unit of assembly
shown by arrow mark (↑).

No.	Name of Parts	Per set	Parts No.
H1	Hammer Case Assy.	1 set	0093 0401 01
H1	Hammer Case (A) Assy.	1 set	0093 0401 00
H1	a) Hammer Case	1	※
H1	b) Core A Assy.	1 set	※
H1	c) Core B	1	※
H1	d) Spacer A	1	※
H1	e) Core C	1	※
H1	f) Core D Assy.	1 set	※
H1	g) Ball Bearing 6801ZZ	1	9100 5028 00
H1	h) Screw M4X5 P=0.7	1	9480 1006 00
H1	i) Micro Connector OX-202	4	8500 4001 00
H1	j) Contraction Tube 1.5'X9	4	9380 5010 00
H1	k) Regulator Cap	1	0093 0204 00
H1	l) O-Ring N10	1	9010 4004 00
H1	m) Cover Plate	1	0093 0014 00
H1	n) Screw M4X8 P=0.7	2	9410 2004 00
H2	Main Shaft Assy.	1 set	0093 0814 01
H3	Bearing Case	1	0093 0850 00
H4	Ball Bearing 6903ZZ	1	9100 5025 00
3	Hex. Bolt M4X14 P=0.7	3	8070 3008 00
4	Spring Washer M4	3	9200 3004 00
5	Washer 12.3X16X6.1	1	8040 6025 00
6	★ Washer 12.5X18X0.5	1	8041 5011 00
6	★ Washer 12.5X18X0.3	1	8041 5034 00
7	Touch Joint 1/4-07	1	9890 0007 00
	Standard Accessories		
	TF Pin 2X90	1	8051 6001 00
	Hanger	1	0004 0017 00
	Parts for YEX-150SA <03>		
H'	Hammer Case Assy.	1 set	0093 0401 00
H'	Main Shaft Assy.	1 set	0093 0814 00
8	Bit Chuck Assy.	1 set	2057 0414 00
	a) Bit Chuck	1	2057 0414 00
	b) Ball 1/8 S	1	9150 3009 00
	c) Spring 13.5X10	1	8020 1340 00
	d) Spring Washer	1	2331 0419 00
	e) Retaining Ring 10X1	1	8030 1009 00

The part "※" can not be supplied individually.
So please order it as a unit of assembly
shown by arrow mark (↑).

★ marked parts; use one of them.

YOKOTA EUROPE BV

e-mail info@impulsetools.com <http://www.impulsetools.com>
 P.O. BOX 392 NL-1000 AJ AMSTERDAM PHONE: 020-825 29 53 FAX: 020-825 35 69
 Hydraulic Impulse Wrenches, Impact Wrenches, Drills, Grinders, Screw Drivers, Chippers, Pumps.

Parts for Motor Case

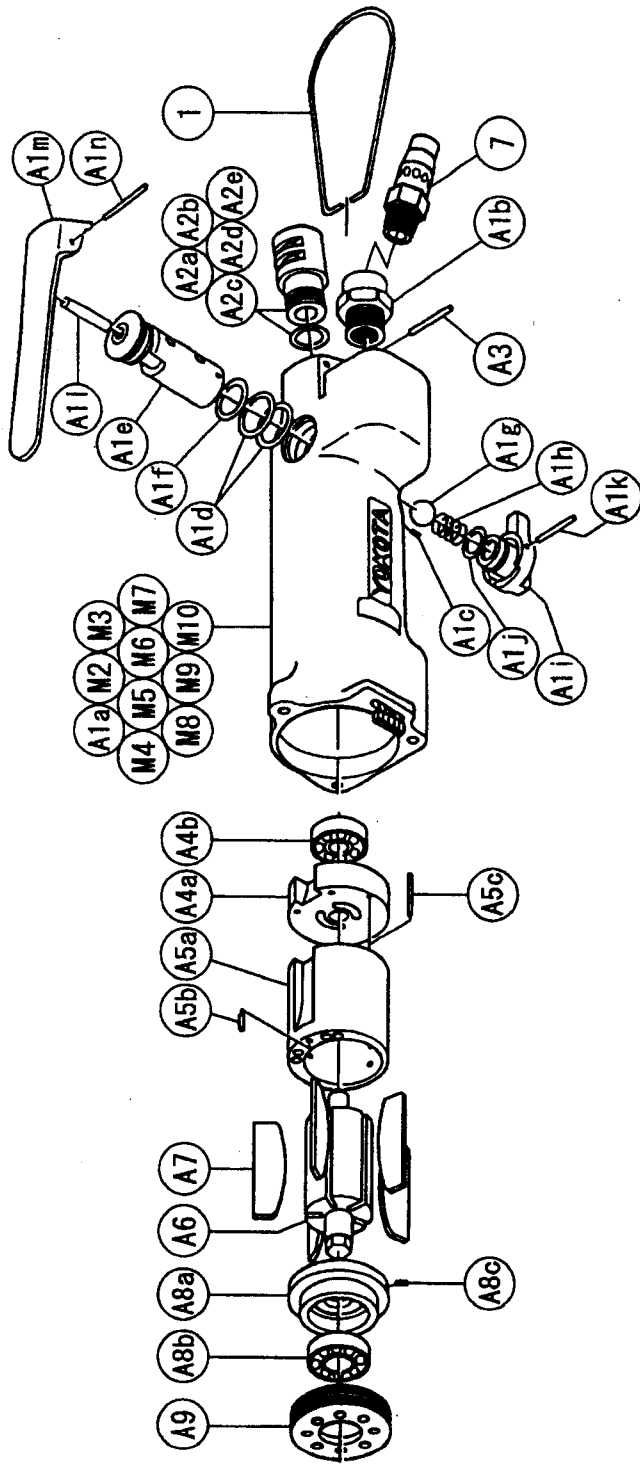
No.	Name of Parts	Per set	Parts No.	No.	Name of Parts	Per set	Parts No.
M	Motor Case Assy.	1 set	0099 0011 01 99	M2	Connector Assy.	1 set	8450 1001 00 99
M1	Motor Case Assy. (1)	1 set	0099 0011 01 69	M3	Contraction Tube 8"X25	1	9380 5006 00 00
A1	Motor Case (B) Assy.	1 set	0099 0011 00 97	M4	Contraction Tube 3"X15	1	9380 5007 00 00
a)	Motor Case	1	*	M5	Contraction Tube 1.5"X10	4	9380 5008 00 00
b)	Hose Joint	1	0237 0113 00 00	M6	Micro Connector PM-10	1	8500 2001 00 00
c)	S.R.Pin 2X5	1	9250 1010 00 00	M7	Buzzer PKB24SP-3816	1	8440 1001 00 00
d)	O-Ring N15	2	9010 4008 00 00	M8	Print Basic A	1	0127 0798 00 01
e)	Reverse Valve Assy.	1 set	0080 0005 00 99	M9	O-Ring P20	1	9010 1017 00 00
e)	Reverse Valve	1	*	M10	Snap Ring RTW-24	1	9040 1014 00 00
f)	O-Ring N12.5	1	9010 4006 00 00				
g)	Ball 5/16 R	1	9150 4002 00 00				
h)	Spring 8X16	1	8020 1066 00 00				
i)	Reverse Lever Assy.	1 set	0084 0007 00 99				
i)	Reverse Lever	1	*				
j)	O-Ring P8	1	9010 1006 00 00				
k)	S.R.Pin 2X20	1	9250 1021 00 00				
l)	JAA Pin 4X21.8	1	8051 3057 00 00				
m)	Throttle Lever	1	0931 0110 00 00				
n)	S.R.Pin 3X25	1	9250 1056 00 00				
a)	Silencer Assy.	1 set	0081 0053 00 99				
a)	Silencer Body	1	*				
b)	O-Ring N10	1	9010 4004 00 00				
c)	Silencer Sheet B	1	0095 0032 00 02				
d)	Silencer Cap	1	2308 0084 00 00				
e)	Snap Ring RTW-14	1	9040 1008 00 00				
A3	S.R.Pin 3X16	1	9250 1050 00 00				
A4	Upper Plate Assy.	1 set	0081 0303 01 99				
a)	Upper Plate	1	0081 0303 01 00				
b)	Ball Bearing 697MC2	1	9102 3001 00 00				
A5	Cylinder Assy.	1 set	0088 0304 01 99				
a)	Cylinder	1	*				
b)	S.R.Pin 2.5X6	1	9250 1030 00 00				
c)	S.R.Pin 2X12	1	9250 1015 00 00				
A8	Rotor	1	0088 0305 00 00				
A7	Vane	5	0088 0306 01 00				
A8	Lower Plate Assy.	1 set	0099 0307 01 99				
a)	Lower Plate	1	0099 0307 01 00				
b)	Ball Bearing 6900CM	1	9102 1001 00 00				
c)	Pin 2.5X8	1	8055 1053 00 00				
A8	Lower Plate Spacer	1	0099 0311 00 00				

The part * can not be supplied individually.
So please order it as a unit of assembly
shown by arrow mark (↑).

yokota
TOOLS

SYSTEM WRENCH

MODEL	(YES/NO.)	TOOL No.
YEX-150S	(03)	0099 0000 03 00
YEX-150SA	(03)	0099 0000 03 01



YOKOTA EUROPE BV

e-mail info@impulsetools.com <http://www.impulsetools.com>

P.O. BOX 392 NL-1000 AJ AMSTERDAM PHONE: 020-625 29 53 FAX: 020-625 35 69
Hydraulic Impulse Wrenches, Impact Wrenches, Drills, Grinders, Screw Drivers, Chippers, Saws, Pumps.