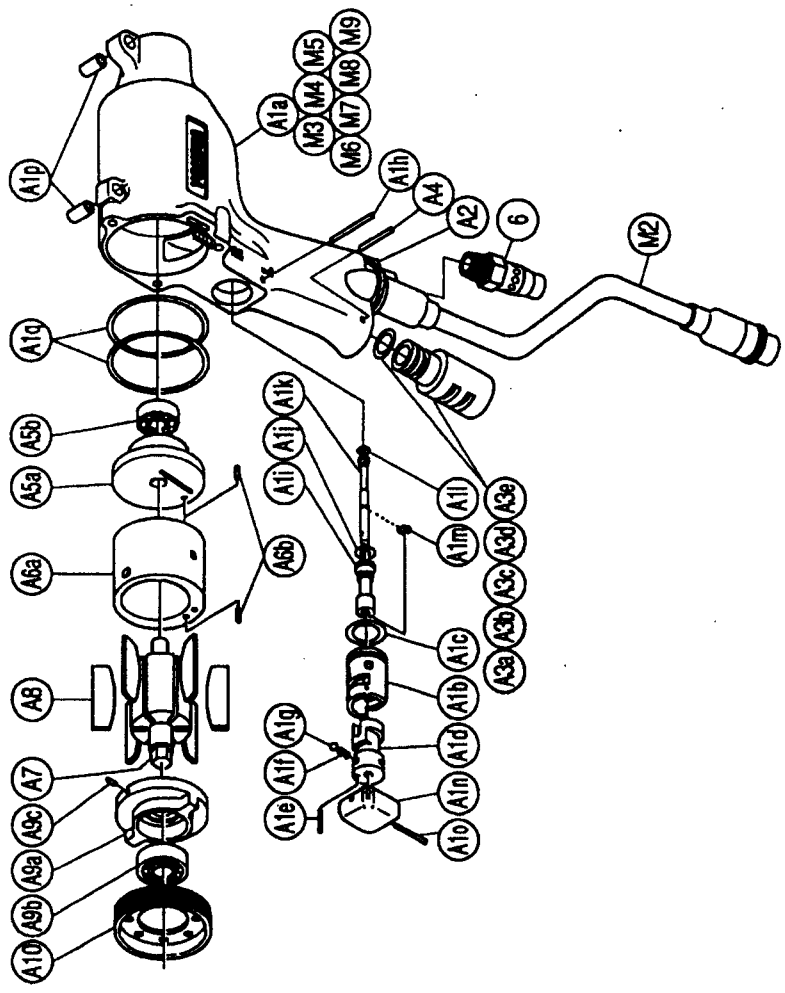




SYSTEM WRENCH

MODELS	(YES/No.)	TOOL No.
YEX-120	(04)	0269 0000 04 00
YEX-120A	(04)	0269 0000 04 01
YEX-120-G	(04)	0269 0000 04 11

No.	Name of Parts	Per set	Parts No.	No.	Name of Parts	Per set	Parts No.
	Motor Case Assy.	1 set	0269 0011 02 99	M2	Holder Assy.	1 set	0407 0717 00 99
M1	Motor Case Assy. (1)	1 set	0269 0011 01 65	M3	Contraction Tube 3X15	1	9380 5007 00 00
	Motor Case (B) Assy.	1 set	0093 0011 00 97	M4	Contraction Tube 1.5X10	4	9380 5008 00 00
	a)Motor Case	1	*	M5	Micro Connector PM-10	1	8500 2001 00 00
	Throttle Bushing Assy.	1 set	0093 0104 00 99	M6	Buzzer PKB24SP-3816	1	8440 1001 00 00
	b)Throttle Bushing	1	*	M7	Print Basic A	1	0127 0798 00 01
	c)O-Ring N15	1	9010 4008 00 00	M8	O-Ring P20	1	9010 1017 00 00
	d)Reverse Valve	1	0093 0005 00 00	M9	Snap Ring RTW-24	1	9040 1014 00 00
	e)S.R.Pin 2.5X12	1	9250 1034 00 00				
	f)Spring 3X4	1	8020 1246 00 00				
	g)Ball 1/8 S	1	9150 3009 00 00				
	h)AA Pin 3X23.8	1	8051 3041 00 00				
	Throttle Rod Bushing Assy.	1 set	0078 0105 00 99				
	i)Throttle Rod Bushing	1	*				
	j)O-Ring No.3 (Hs90)	1	9010 3021 00 00				
	Throttle Rod Assy.	1 set	2058 0108 01 99				
	k)Throttle Rod	1	*				
	l)O-Ring N2	1	9010 4001 00 00				
	m)Snap Ring ETW-2.8	1	9040 5008 00 00				
	n)Throttle Knob	1	0093 0153 00 00				
	o)S.R.Pin 1.5X14	1	9250 1005 00 00				
	p)S.R.Pin 6X10	2	9250 2012 00 00				
	q)O-Ring N40	2	9010 4017 00 00				
A2	Hose Joint	1	0269 0113 00 00				
A3	Silencer Assy.	1 set	0081 0053 00 99				
	a)Silencer Body	1	*				
	b)O-Ring N10	1	9010 4004 00 00				
	c)Silencer Sheet B	1	0095 0032 00 02				
	d)Silencer Cap	1	2306 0084 00 00				
	e)Snap Ring RTW-14	1	9040 1006 00 00				
A4	S.R.Pin 3X16	1	9250 1050 00 00				
A5	Upper Plate Assy.	1 set	0093 0303 01 99				
	a)Upper Plate	1	0093 0303 01 00				
	b)Ball Bearing 697	1	9100 1060 00 00				
A6	Cylinder Assy.	1 set	0093 0304 01 99				
	a)Cylinder	1	*				
	b)S.R.Pin 2X6	2	9250 1011 00 00				
A7	Rotor	1	0093 0305 00 00				
A8	Vane	6	0093 0306 01 00				
A9	Lower Plate Assy.	1 set	0093 0307 00 99				
	a)Lower Plate	1	0093 0307 00 00				
	b)Ball Bearing 6900	1	9100 1046 00 00				
	c)Pin 2.5X6	1	8055 1053 00 00				
A10	Lower Plate Spacer	1	0093 0311 00 00				



YOKOTA EUROPE BV

e-mail info@impulsetools.com <http://www.impulsetools.com>
 P.O. BOX 392 NL-1000 AJ AMSTERDAM PHONE: 020-625 29 53 FAX: 020-625 35 69
 Hydraulic Impulse Wrenches, Impact Wrenches, Drills, Grinders, Screw Drivers, Chippers, Scales, Pumps.

The part * can not be supplied individually.
 So please order it as a unit of assembly
 shown by arrow mark (↑).

Parts for Liner Case

No.	Name of Parts	Per set	Parts No.
L1	Liner Case Assy.	1 set	0265 0422 0599
	Liner Case (A) Assy.	1 set	0093 0422 0398
	a)Liner Case	1	*
	b)Adjust Bolt M3X8 P=0.5	1	0093 0522 0100
	c)O-Ring N30	1	9010 4019 00 00
	d)Spring 2.4X6	1	8020 1287 00 00
	e)Rubber Plate	2	0081 0047 00 00
	f)Screw M3X3 P=0.5	1	9480 2028 00 00
L2	Liner Cap	1	0081 0423 01 00
L3	Liner Upper Plate	1	0259 0424 01 00
L4	O-Ring 1.5X26.5X29.5	1	9010 6023 00 00
L5	Liner Assy.	1 set	0136 0425 01 99
	a)Liner	1	*
	b)AA Pin 2X5 <41-44HRC>	4	8052 3002 00 00
L6	Relief Valve Assy.	1 set	0265 0245 00 99
	a)Relief Valve	1	*
	b)O-Ring 0.7X2X3.4	1	9010 6020 00 00
L7	Liner Shaft	1	0079 0796 02 00
L8	Blade	2	0088 0719 03 00
L9	Spring 3.1X20	2	8020 1296 00 00
L10	Liner Lower Plate Assy.	1 set	0158 0428 00 99
	a)Liner Lower Plate	1	*
	b)S/R Pin 3X8	1	9250 2022 00 00
L11	Oil Plug	1	0081 0010 01 00
L12	O-Ring N3	1	9010 4025 00 00
L13	Oil Stop Cap Assy.	1 set	0081 0602 00 99
	a)Oil Stop Cap	1	*
	b)O-Ring N2	1	9010 4001 00 00
	c)Back-Up Ring	1	9090 2001 00 00
L14	O-Ring 1X25.2X27.2	1	9010 6012 00 00
L15	O-Ring 2.3X11.8X16.4	1	9010 6019 00 00
L16	Back-Up Ring 12X18X0.8	1	9090 1010 00 00
L17	S-Packing	1	0093 0003 00 00

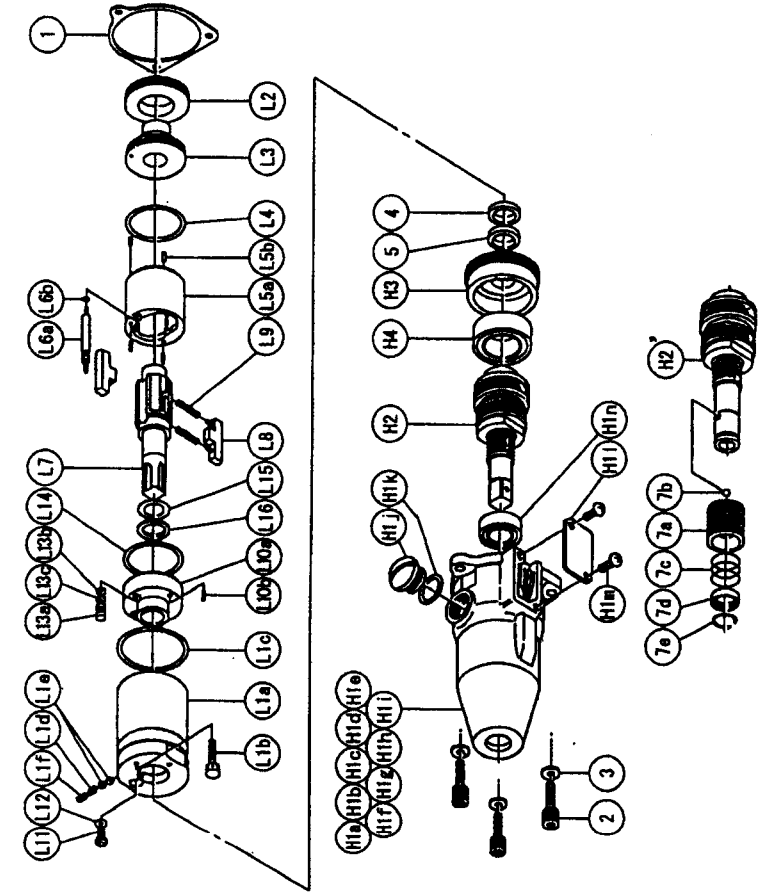
The part "*" can not be supplied individually.
So please order it as a unit of assembly shown by arrow mark (↑).



SYSTEM WRENCH

MODELS (YES/No)	TOOL No.
YEX-120 (04)	0269 0000 04 00
YEX-120A (04)	0269 0000 04 01
YEX-120-G (04)	0269 0000 04 11

Exploded View of Liner Case and Hammer Case



Parts For Hammer Case

No.	Name of Parts	Per set	Parts No.
H	Hammer Case Assy.	1 set	0265 0401 01 91
H1	Hammer Case (A) Assy.	1 set	0265 0401 00 91
	a)Hammer Case	1	*
	b)Core A Assy.	1 set	*
	c)Core B	1	*
	d)Spacer A	1	*
	e)Core C	1	*
	f)Core D Assy.	1 set	*
	g)Screw M4X5 P=0.7	1	9480 1006 00 00
	h)Micro Connector OX-202	4	8500 4001 00 00
	i)Contraction Tube 1.5'X9	4	9380 5010 00 00
	j)Regulator Cap	1	0093 0204 00 00
	k)O-Ring N10	1	9010 4004 00 00
	l)Cover Plate	1	0093 0014 00 00
	m)+ Screw M4X8 P=0.7	2	9410 2004 00 00
	n)Ball Bearing 6801ZZ	1	9100 5028 00 00
H2	Main Shaft Assy.	1 set	0093 0614 01 91
H3	Bearing Case	1	0093 0650 00 00
H4	Ball Bearing 6903ZZ	1	9100 5025 00 00
2	Hex. Bolt M4X14 P=0.7	3	8070 3008 00 00
3	Spring Washer M4	3	9200 3004 00 00
4	Washer 12.3X16X6.1	1	8040 6025 00 00
5 1	Washer 12.5X18X0.5	1	8041 5011 00 00
5 2	Washer 12.5X18X0.3	1	8041 5034 00 00
6	Touch Joint 1/4-07	1	9690 0007 00 00
	Standard Accessories		
	TF Pin 2X90	1	8051 6001 00 00
	Protector	1	0093 0029 00 00

Parts for YEX-120A <03>

H'	Hammer Case Assy.	1 set	0265 0401 00 81
H2'	Main Shaft Assy.	1 set	0093 0614 00 81
7	Bit Chuck Assy.	1 set	2057 0414 00 91
	a)Bit Chuck	1	2057 0414 00 00
	b)Ball 1/8 S	1	9150 3009 00 00
	c)Spring 13.5X10	1	8020 1340 00 00
	d)Spring Washer	1	2331 0419 00 00
	e)Retaining Ring 10X1	1	8030 1009 00 00

Parts for YEX-120-G <03>

H''	Hammer Case Assy.	1 set	0269 0401 01 31
H1''	Hammer Case Assy. (1)	1 set	0269 0401 00 61
	a)Hammer Case A	1	*

The part "*" can not be supplied individually.
So please order it as a unit of assembly shown by arrow mark (↑).

YOKOTA EUROPE BV

e-mail info@impulsetools.com <http://www.impulsetools.com>
P.O. BOX 362 NL-1000 AJ AMSTERDAM PHONE: 020-625 29 53 FAX: 020-625 35 69
Hydraulic Impulse Wrenches, Impact Wrenches, Drills, Grinders, Screw Drivers, Chippers, Scales, Pumps.