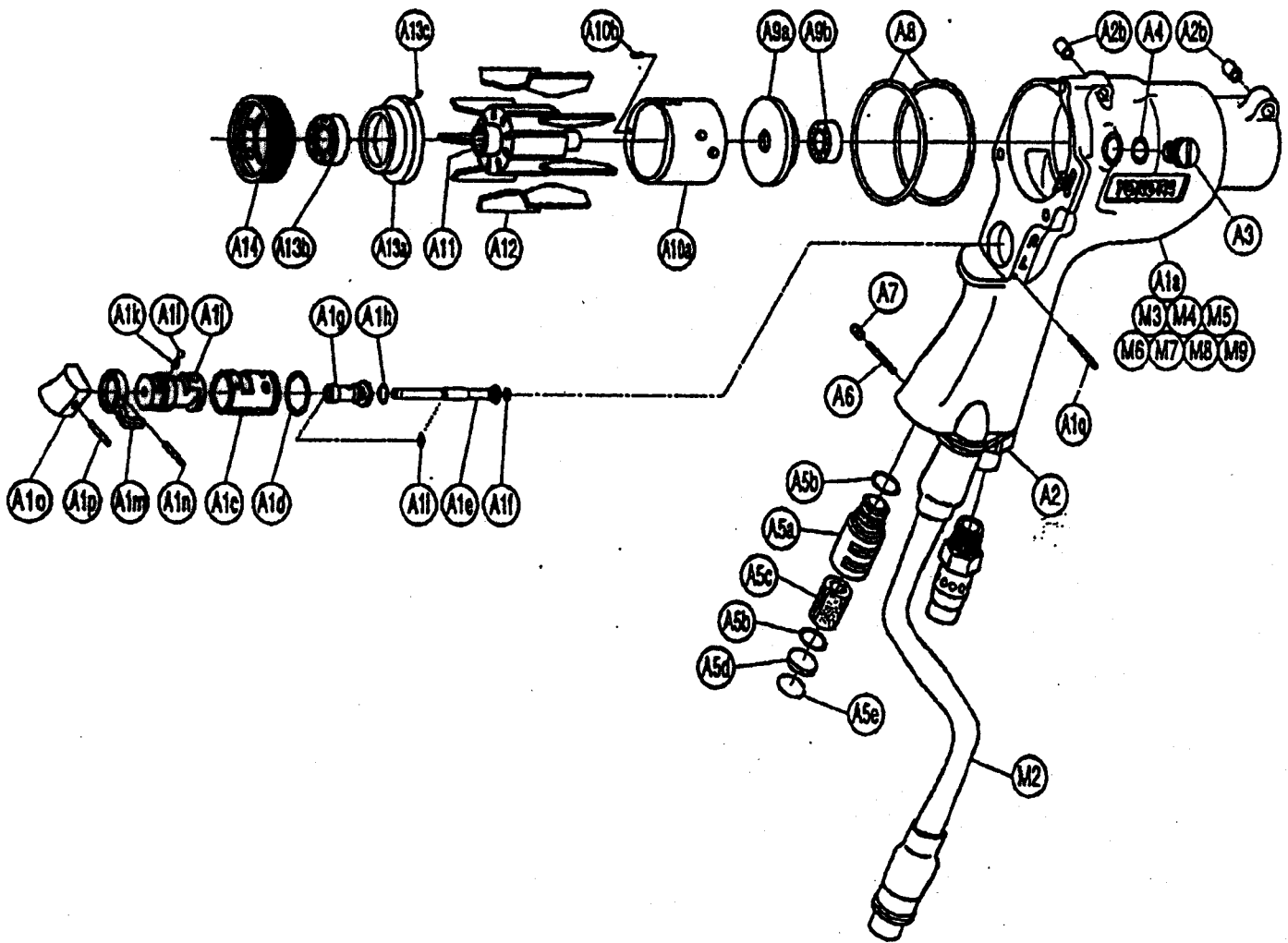


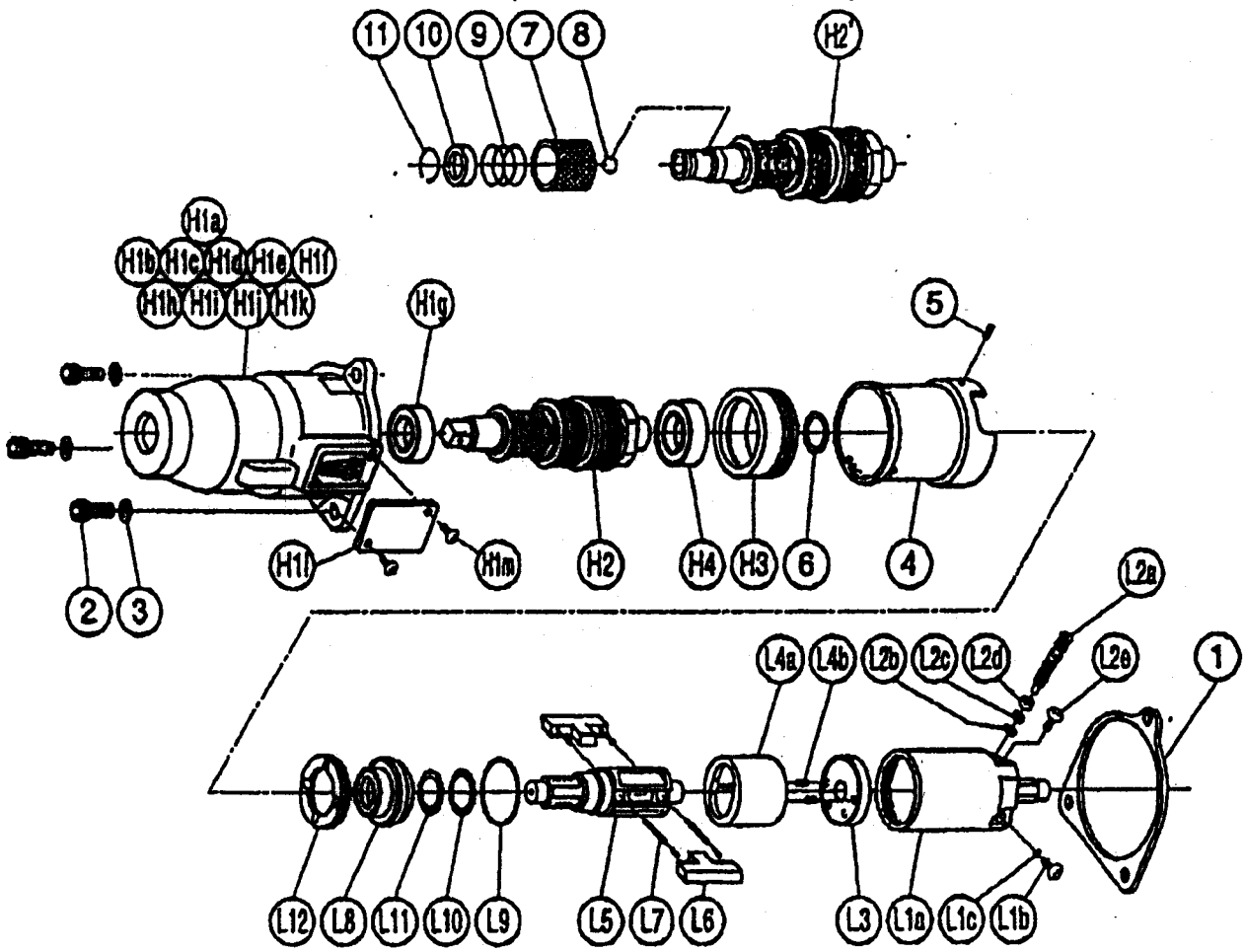
# Exploded view

Impulse wrench with electronic torque control YED-60(A) (YES-00)



# Exploded view

Impulse wrench with electronic torque control YED-60(A) (YES-00)



# Partslist

Impulse wrench with electronic torque control: YED-60(A) (YES-00)

No.	Name of Parts	Per Set	Parts No.
H	Hammer Case Assy.	1set	0270 0401 00 99
H1	Hammer Case (A) Assy.	1	0270 0401 00 98
	(a) Hammer Case	1	*
	(b) Core (A) Assy.	1set	*
	(c) Core (B)	1	*
	(d) Spacer (A)	1	*
	(e) Core (C)	1	*
	(f) Core (D) Assy.	1set	*
	(g) Ball Bearing (6801ZZ)	1	*
	(h) Screw ( $\phi 4 \times 0.7 \times 6$ )	1	*
	(i) Shrinkage Tube ( $\phi 1.5 \times 9$ )	4	*
	(j) Shrinkage Tube ( $\phi 2 \times 9$ )	4	*
	(k) Micro Connector (DX-202)	4	8500 4001 00 00
	(l) Cover Plate	1	0093 0014 00 00
	(m) Screw (M4x8)	2	9410 2004 00 00
H2	Main Shaft Assy.	1set	0270 0614 00 99
H3	Bearing Case	1	0270 0650 00 00
H4	Ball Bearing (6902ZZ)	1	9100 5032 00 00
4	Sleeve	1	0270 0313 00 00
5	Spring Pin (2x5)	1	9250 1010 00 00
6	Washer (12.5x18x1)	1	8041 5021 00 00
<b>Y-E60A</b>			
H'	Hammer Case Assy.	1set	0270 0401 00 99
H2'	Main Shaft Assy.	1set	0270 0614 00 99
	Bit Chuck Assy.	1set	2057 0414 00 99
7	Bit Chuck	1	2057 0414 00 00
8	Ball (1/8)	1	9150 3009 00 00
9	Spring (13.5x11.2)	1	8020 1137 00 00
10	Spring Washer	1	2057 0419 00 00
11	Retaining Ring (10x1)	1	8030 1009 00 00
<b>Standard Accessories</b>			
	Touch Joint (1/4-07)	1	9690 0007 00 00
	Hex. Wrench (H2x65x65)	1	9610 1013 00 00

No.	Name of Parts	Per Set	Parts No.
L	Liner Case Assy.	1set	0270 0422 01 99
L1	Liner Case (A) Assy.	1	0270 0422 00 98
	(a) Liner Case	1	0270 0422 00 00
	(b) Oil Plug	1	0081 0010 00 00
	(c) O - Ring (N3)	1	9010 4025 00 00
L2	Adjust Bolt Assy.	1set	0270 0522 00 99
	(a) Adjust Bolt.	1	0270 0522 00 00
	(b) O - Ring (N2)	1	8010 4001 00 00
	(c) Back-up Ring	1	8090 2001 00 00
	(d) Nylon Bushing (4.5x2.8x1.8)	1	0270 0431 00 00
(e) Oil Plug	1	0081 0010 00 00	
L3	Liner Upper Plate	1	0270 0424 01 00
L4	Liner Assy.	1set	0270 0425 00 99
	(a) Liner	1	*
	(b) AA Pin (3x10.8)	2	8051 3087 00 00
L5	Liner Shaft	1	0270 0796 01 00
L6	Blade	2	0258 0718 01 00
L7	Spring (3.1x19)	2	8020 1308 00 00
L8	Liner Lower Plate	1	0270 0426 00 00
L9	O - Ring (1.5x26.5x29.5)	1	9010 8023 00 00
L10	X - Ring (2.25x2.4x12.5)	1	9910 0001 00 00
L11	Back-up Ring (12x16x1)	1	8090 5001 00 00
L12	Liner Cap	1	0270 0423 00 00
1	S - Packing	1	0083 0003 00 00
2	Bolt (M4x14)	3	8070 3008 00 00
3	Spring Washer (M4)	3	9270 3004 00 00

# Partslist

Impulse wrench with electronic torque control YED-60(A) (YES-00)

No.	Name of Parts	Per Set	Parts No.
M	Motor Case Assy.	1set	0270 0011 01 99
M1	Motor Case (A) Assy.	1	0270 0011 01 99
A1	Motor Case (B) Assy.	1	0270 0011 01 97
	(a) Motor Case	1	0270 0011 01 00
	(b) Spring Roll Pin (8×10)	2	9250 1082 00 00
	Throttle Bushing Assy.	1set	0138 0104 01 99
	(c) Throttle Bushing	1	※ 1
	(d) O - Ring (N16)	1	9010 4009 00 00
	Throttle Rod Assy.	1set	0229 0108 00 99
	(e) Throttle Rod	1	※ 1
	(f) O - Ring (N2)	1	9010 4001 00 00
	Throttle Rod Bushing Assy.	1set	0258 0105 00 99
	(g) Throttle Rod Bushing	1	※ 1
	(h) O - Ring (No.3)	1	9010 3021 00 00
	(i) Snap Ring (ETW-2.8)	1	9040 5008 00 00
	(j) Reverse Valve	1	0138 0005 01 00
	(k) Spring (3×4)	1	8020 1246 00 00
	(l) Ball (1/8)	1	9150 3009 00 00
	(m) Reverse Lever	1	2315 0007 00 00
	(n) Spring Roll Pin (2×12)	1	9250 1015 00 00
	(o) Throttle Knob	1	2024 0183 00 00
	(p) Spring Roll Pin (1.5×14)	1	9250 1005 00 00
	(q) AA Pin (3×23.8)	1	8051 3041 00 00
A2	Hose Joint	1	0270 0113 00 00
A3	Regulator Cap	1	0270 0204 00 00
A4	O - Ring (N6)	1	9010 4028 00 00
A5	Silencer Assy.	1set	0138 0063 00 99
	(a) Silencer Body	1	0258 0063 00 00
	(b) O - Ring (F12.5)	2	9010 1012 00 00
	(c) Silencer Sheet B	1	0138 0032 00 02
	(d) Silencer Cap	1	0094 0084 00 00
	(e) Snap Ring (RTW-18)	1	9040 1010 00 00
A6	Pin (3×13)	1	8051 1099 00 00
A7	Screw (M4×4)	1	9490 2031 00 00
A8	O - Ring (N40)	2	9010 4017 00 00
A9	Upper Plate Assy.	1set	0270 0303 00 99
	(a) Upper Plate	1	0270 0303 01 00
	(b) Ball Bearing 1 (697)	1	9100 1060 00 00
A10	Cylinder Assy.	1set	0270 0304 01 99
	(a) Cylinder	1	※ 1
	(b) Pin (2.5×6)	1	8055 1053 00 00
A11	Rotor	1	0270 0305 01 00
A12	Vane	9	0270 0308 00 00
A13	Lower Plate Assy.	1set	0270 0307 00 99
	(a) Lower Plate	1	0270 0307 01 00
	(b) Ball Bearing (#6801)	1	9100 1056 00 00
	(c) Pin (2.5×6)	1	8055 1053 00 00
A14	Lower Plate Spacer	1	0270 0311 00 00

No.	Name of Parts	Per Set	Parts No.
M2	Holder Assy.	1set	0270 0717 00 99
M3	Shrinkage Tube (φ3×15)	1	9380 8007 00 00
M4	Shrinkage Tube (φ1.5×10)	4	9380 5008 00 00
M5	Micro Connector (PM-10)	1	8500 2001 00 00
M6	Buzzer	1	9440 1001 00 00
M7	Print Basic A	1	0127 0798 00 01
M8	O - Ring (P20)	1	9010 1017 00 00
M9	Snap Ring (RTW-24)	1	9040 1014 00 00