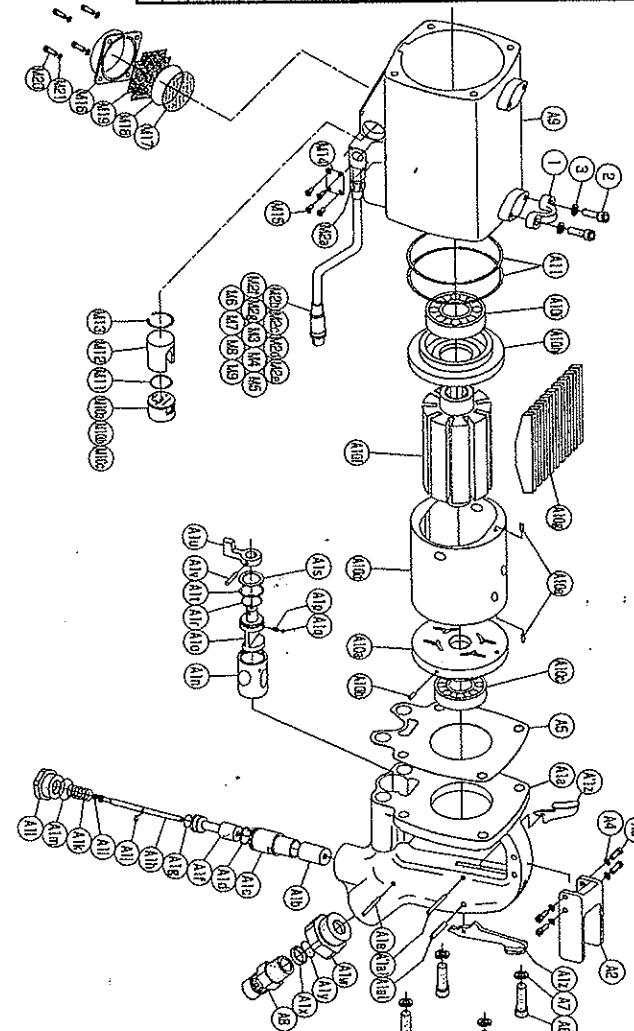


Parts for Motor Case

No.	Name of Parts	Per Set	Parts No.
M	Motor Case Assy.	1set	0411 001 00 99
M1	Motor Case Assy. (1)	1set	0411 001 00 99
A1	Handle Assy.	1set	0411 0002 00 99
	(a) Handle	1	* 1
	(b) Throttle Bushing (B)	1	0411 0104 00 02
	Throttle Bushing (A) Assy.	1set	0411 0104 00 99
	(c) Throttle Bushing (A)	1	* 1
	(d) O - Ring	1	9010 4009 00 00
	(e) Pin (3x26)	1	8051 1113 00 00
	Throttle Rod Bushing Assy.	1set	0411 0105 00 99
	(f) Throttle Rod Bushing	1	* 1
	(g) O - Ring (P12.5)	1	9010 1052 00 00
	Throttle Rod Assy.	1set	0411 0106 00 99
	(h) Throttle Rod	1	* 1
	(i) O - Ring (N4)	1	9010 4058 00 00
	(j) Snap Ring (ETW-3)	1	9040 5001 00 00
	(k) Spring (11x22)	1	8020 1337 00 00
	Throttle Cap Assy.	1set	0411 0107 00 99
	(l) Throttle Cap	1	* 1
	(m) O - Ring (N20)	1	9010 4010 00 00
	(n) Reverse Bushing	1	0411 0304 00 00
	(o) Reverse Valve	1	0411 0005 00 00
	(p) Spring (3x4)	1	8023 1246 00 00
	(q) Ball (1/8)	1	9130 3009 00 00
	(r) O - Ring (N15)	1	9010 4023 00 00
	(s) Washer (16x22x1)	1	8040 1182 00 00
	(t) Snap Ring (RTW-22)	1	9040 1013 00 00
	(u) Reverse Lever	1	0411 0007 00 00
	(v) Spring Pin (3x16)	1	9250 1050 00 00
	Hose Joint Assy.	1set	0411 0113 00 99
	(w) Hose Joint	1	0411 0113 00 00
	(x) Washer (13.5x16x4)	1	8042 2010 00 00
	(y) Strainer	1	0409 0111 00 00
	(z) Throttle Lever	1	0601 0110 00 00
	(a1) Pin (4x22)	1	8051 1147 00 00
A2	Lever Guard	1	0411 1129 00 00
A3	Hexagon Socket Head Cap Screw(M4x10)	4	8070 3007 00 00
A4	Spring Washer (M4)	4	9200 3004 00 00
A5	S - Packing (A)	1	0411 0003 00 01
A6	Hexagon Socket Head Cap Screw(M8x28)	4	8070 3044 00 00
A7	Spring Washer (M8)	4	9200 3008 00 00
A8	Touch Joint (1/2)	1	9890 0016 00 00
A9	Motor Case	1	0411 0011 00 00
A10	Motor Assy.	1set	0411 0305 00 99
	Upper Plate Assy.	1set	0411 0303 00 99
	(a) Upper Plate	1	0411 0303 00 00
	(b) Pin (3x8)	1	8055 1065 00 00
	(c) Ball Bearing (6004CM)	1	9102 1013 00 00
	Cylinder Assy.	1set	0411 0304 00 99
	(d) Cylinder	1	0411 0304 00 00
	(e) Pin (3x8)	2	8055 1065 00 00
	(f) Rotor	1	0411 0305 00 00
	(g) \	9	0411 0306 00 00

No.	Name of Parts	Per Set	Parts No.
	Lower Plate Assy.	1set	0411 0307 00 99
	(h) Lower Plate	1	0411 0307 00 00
	(i) Ball Bearing (16006)	1	9100 1071 00 00
	(j) O - Ring (N85)	2	9010 4053 00 00
A11	O - Ring	1	9010 4053 00 00
M2	Holder Assy.	1	0175 0717 00 99
	(a) Holder	1	0169 0717 00 00
	Cable Assy.	1set	0407 0902 00 99
	(b) Connector (R05 - JB3M)	1	* 1
	(c) Cable (820mm)	1	* 1
	(d) Shrinkage Tube (W382)	1	* 1
	(e) O - Ring (P9)	3	9010 1048 00 00
	(f) Washer (7.3x11.1x1.5)	2	8040 1151 00 00
	(g) Lock Bolt	1	0270 0666 00 00
M3	Shrinkage Tube (W382)	1	9390 5014 00 00
M4	Shrinkage Tube (φ3x15)	1	9380 5007 00 00
M5	Shrinkage Tube (φ1.5x10)	4	9390 5008 00 00
M6	Micro Connector (PM-10)	1	9500 2001 00 00
M7	Shrinkage Tube (φ3.5x8)	1	9380 5016 00 00
M8	Socket Contact (170205-1)	1	8480 1001 00 00
M9	Socket Housing (171822-2)	1	8470 1001 00 00
M10	Buzzer Basic Assy.	1set	0234 0798 00 99
	(a) Buzzer (PKB24SP-3816)	1	* 1
	(b) Pinheader (171825-2)	1	* 1
M11	O - Ring (P20)	1	9010 1017 00 00
M12	Cap	1	0411 0121 00 00
M13	Snap Ring (RTW-24)	2	9040 1014 00 00
M14	Cover	1	7653 0708 00 00
M15	Screw with Cross Hole(M3x6)	4	9410 2028 00 00
M16	Silencer Body	1	0411 0053 00 00
M17	Silencer Sheet (A)	1	0411 0032 00 01
M18	Silencer Sheet (B)	1	0411 0032 00 02
M19	Silencer Sheet (C)	1	0411 0032 00 03
M20	Hexagon Socket Head Cap Screw (M4x8)	4	8070 3005 00 00
M21	Spring Washer (M4)	4	9200 3004 00 00
	Hangar	2	0509 0017 00 00
2	Hexagon Socket Head Cap Screw(M3x20)	4	8070 3034 00 00
3	Spring Washer (M6)	4	9200 3006 00 00



**With built - in torque sensor
2 BLADE SYSTEM WRENCH**

MODEL (YES.No.)	TOOL No.
YED-240S (01)	0411 0000 0100
YED-240S-U (01)	0411 0000 0117

Exploded View of Motor Case



YOKOTA EUROPA BV

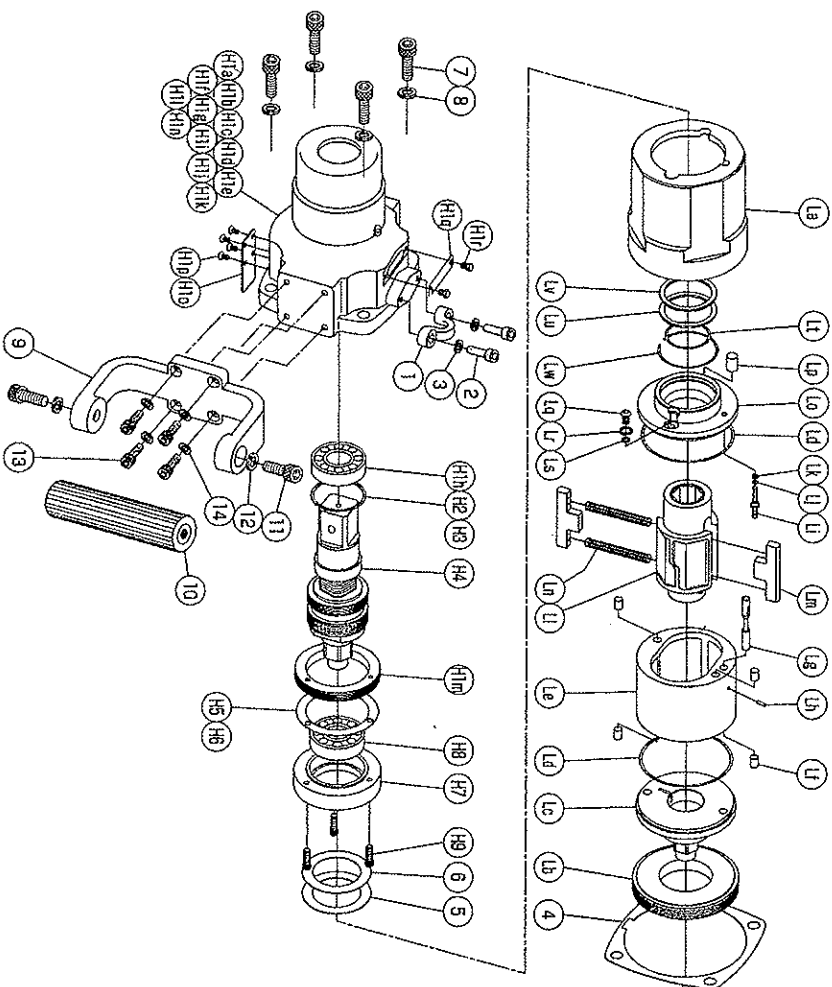
BOX 392 NL-1000 AJ AMSTERDAM PHONE 020-5318900 FAX 020-5318608
Hydraulische Impuls- und Drehmoments- und Drehmoment-Sensoren, Drilloperatoren, Sägen, Pumpen

The part "*" can not be supplied individually. So please order it as a unit of assembly shown by arrow mark (↑).

With built - in torque sensor 2 BLADE SYSTEM WRENCH

MODEL (YES.No.)	TOOL No.
YED-240S (01)	0411 0000 0100
YED-240S-U (01)	0411 0000 0117

Exploded View of Liner Case and Hammer Case



Parts for Liner Case

No.	Name of Parts	Per Set	Parts No.
L	Liner Case Assy.	1set	0411 0422 01 99
	(a) Liner Case	1	0411 0422 00 00
	(b) Liner Cap	1	0411 0423 00 00
	(c) Liner Upper Plate	1	0411 0424 00 00
	(d) O - Ring (N7D)	2	9010 4054 00 00
	Liner Assy.	1set	0411 0425 00 99
	(e) Liner	1	* 1
	(f) Pin (6x8)	4	8051 1210 00 00
	(g) Relief Valve	1	0411 0245 00 00
	(h) Pin (2x8)	1	8051 1041 00 00
	(i) Adjust Bolt	1	0411 0822 00 00
	(j) O - Ring (N5)	1	9010 4033 00 00
	(k) Back-up Ring (5x7x1)	1	9090 1025 00 00
	(l) Liner Shaft	1	0411 0796 01 00
	(m) Blade (6.6x6D)	2	0411 0719 01 00
	(n) Spring	2	8020 1339 00 00
	Liner Lower Plate Assy.	1set	0411 0426 00 99
	(o) Liner Lower Plate (8x12)	1	0411 0426 00 00
	(p) Pin (8x12)	1	8051 1302 00 00
	(q) Hex. Button Bolt (M5x8)	1	8071 1011 00 00
	(r) Washer (7.5x9.5x1.2)	1	8040 1127 00 00
	(s) O - Ring (N5)	1	9010 4033 00 00
	(t) O - Ring (KSB0221)	1	9011 1003 00 00
	(u) Back-up Ring (68x42.6x1.5)	1	9090 1024 00 00
	(v) Washer (36x43x1.5)	1	8042 1014 00 00
	(w) Retaining Ring (42.7x1.4)	1	8030 1080 00 00
4	S - Packing (B)	1	0411 0003 00 02

Parts for Hammer Case

No.	Name of Parts	Per Set	Parts No.
H	Hammer Case Assy.	1set	0411 0401 00 99
H1	Hammer Case Assy. (1)	1set	0411 0401 00 99
	(a) Hammer Case	1	*
	(b) Spring Pin (2x4)	1	*
	(c) Core (A) Assy.	1set	*
	(d) Core (B)	1	*
	(e) Spacer (A)	1	*
	(f) Core (C)	1	*
	(g) Core (D) Assy.	1set	*
	(h) Ball Bearing (6907ZZ)	1	9100 5022 00 00
	(i) Hexagon Socket Set Screw (M4x3)	1	9490 1006 00 00
	(j) Shrinkage Tube (φ 1.5x9)	4	9380 5010 00 00
	(k) Micro Connector (OX-202)	4	8500 4001 00 00
	(l) Micro Connector (FM-10)	1	8500 2001 00 00
	(m) Lock Nut (B)	1	0407 0819 00 02
	(n) Isolation Sheet	1	0168 1525 00 00
	(o) Cover Plate (A)	1	0411 0014 00 01
	(p) Screw with Cross Hole (M3x9)	4	9410 2028 00 00
	(q) Cover Plate (B)	1	0411 0014 00 02
	(r) Hex Bolt (M4x6)	2	8070 1051 00 00

No.	Name of Parts	Per Set	Parts No.
*H2	ST-Packing (38x41.5x0.1)	1	8011 1091 00 00
*H3	ST-Packing (38x41.5x0.2)	1	8011 1092 00 00
H4	Main Shaft Assy.	1set	0411 0614 00 99
*H5	ST-Packing (48x62x0.1)	1	8011 1093 00 00
*H6	ST-Packing (48x62x0.2)	1	8011 1094 00 00
H7	Bearing Case	1	0411 0650 00 00
H8	Ball Bearing (6905ZZ)	1	9100 5013 00 00
H9	Hexagon Socket Head Cap Screw (M4x3)	3	8070 3009 00 00
5	Washer (36.5x52x1)	1	8042 1015 00 00
6	Washer (36.5x52x1)	1	9041 5041 00 00
7	Hexagon Socket Head Cap Screw (M3x2)	4	8070 3044 00 00
8	Spring Washer (M3)	4	9200 3008 00 00
9	D - Handle (A)	1	0411 0411 00 01
10	D - Handle (B)	1	0411 0411 00 02
11	Hexagon Socket Head Cap Screw (M3x2)	2	8070 3042 00 00
12	Spring Washer (M3)	2	9200 3008 00 00
13	Hexagon Socket Head Cap Screw (M3x3)	4	8070 3051 00 00
14	Spring Washer (M5)	4	9200 3005 00 00
Special Parts for U-version			
M'	Motor Case Assy.	1set	0411 0011 00 98
M'1	Motor Case Assy. (1)	1set	0411 0011 00 98
A'1	Handle Assy.	1set	0411 0002 00 98
	(a) Handle	1set	0411 0002 00 00
	(2) Throttle Lever	1	8001 0110 00 00
	(a1) Pin (3x2.6)	1	8051 1113 00 00
Standard Accessory			
	Spanner (H3,H7)	1	8081 7001 00 00

The part "*" can not be supplied individually.
So please order it as a unit of assembly shown by arrow mark (↑).

*marked parts may be not used, in some case.



YOKOTA EUROPA BV

P.O. BOX 392 NL-1000 AV AMSTERDAM PHONE 020-5318600 FAX 020-5318608