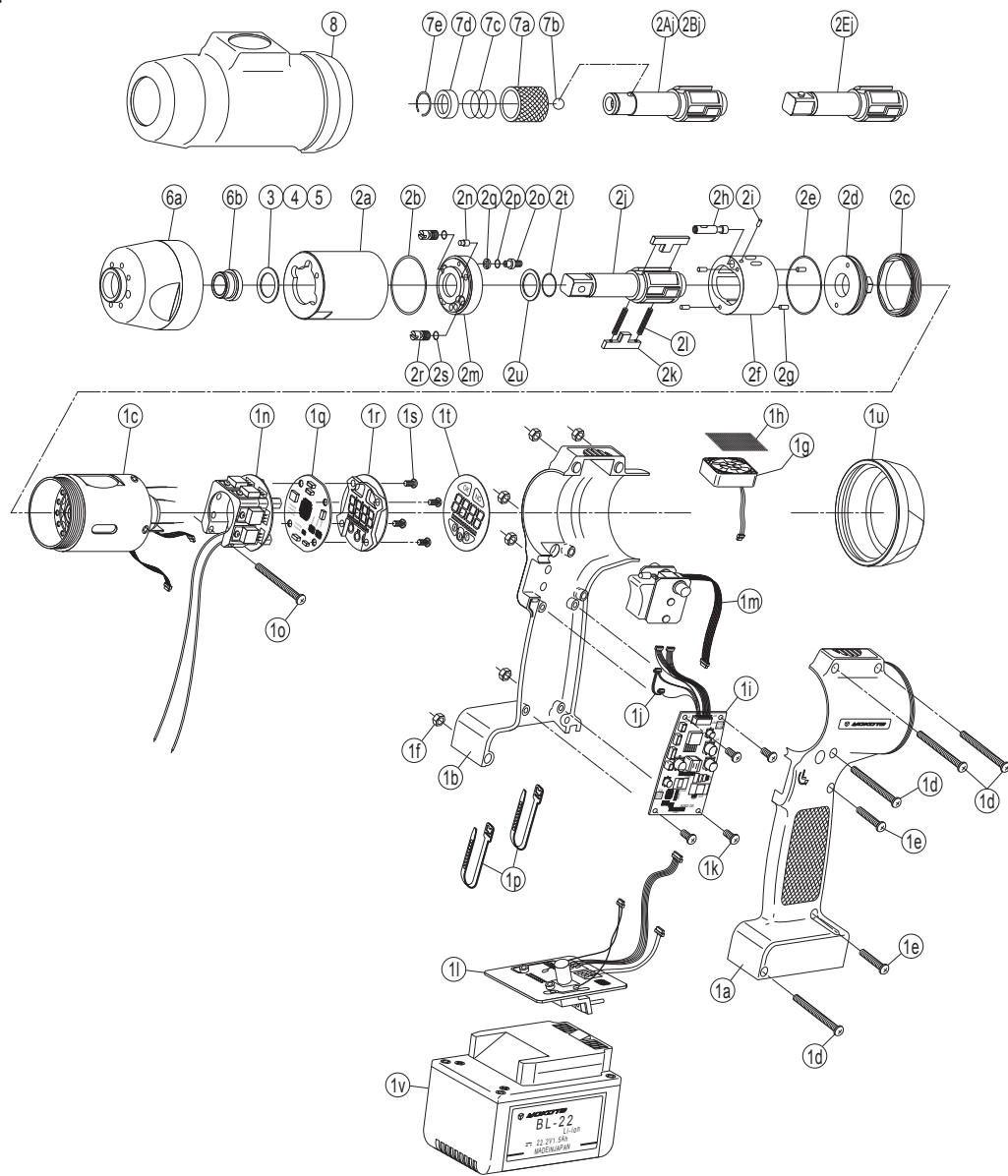


CORDLESS IMPULSE WRENCHES

| MODELS (YES.No.) | TOOL No. |
|------------------|----------------|
| YBX-600T (03) | 0351 0000 0300 |
| YBX-600TA (03) | 0351 0000 0301 |
| YBX-600TB (03) | 0351 0000 0302 |
| YBX-600TE (03) | 0351 0000 0309 |

Exploded View



Parts List

| No. | Name of Parts | Per Set | Parts No. | No. | Name of Parts | Per Set | Parts No. |
|------------------------------|---------------------------------|-----------------|-----------------|-------------------------------|-------------------------------|-----------------|-----------------|
| 1 | Motor Case Assy. | 1set | 0351 0011 04 99 | 6 | Hammer Case Assy. | 1set | 0351 0401 00 99 |
| | Motor Case Assy. 1 | 1set | 0351 0011 04 69 | | (a) Hammer Case | 1 | 0351 0401 00 00 |
| | (a) Motor Case (A) L | 1 | ※ ↑ | (b) Main Shaft Bushing | 1 | 0259 0612 00 00 | |
| | (b) Motor Case (A) R | 1 | ※ ↑ | Parts for YBX-600TA·YBX-600TB | | | |
| | (c) Motor Assy. | 1set | 0351 0330 03 99 | 2A | Liner Case Assy. | 1set | 0351 0422 00 98 |
| | (d) Screw (M3×25) | 4 | 9410 2042 00 00 | | (j) Main Shaft (A-type) | 1 | 0189 0614 00 51 |
| | (e) Screw (M3×12) | 2 | 9410 2043 00 00 | 2B | Liner Case Assy. | 1set | 0351 0422 00 97 |
| | (f) Hex Nut (M3) | 6 | 9500 1041 00 00 | | (j) Main Shaft (B-type) | 1 | 0189 0614 00 52 |
| | (g) Fan (F31ORF-12LB) | 1 | 8542 8003 00 00 | 7 | Bit Chuck Assy. | 1set | 2057 0414 00 99 |
| | (h) Silencer Sheet | 1 | 0351 0032 00 00 | | (a) Bit Chuck | 1 | 2057 0414 00 00 |
| | (i) Power Supply Substrate | 1 | 0351 0195 01 00 | | (b) Ball (1/8) | 1 | 9150 3009 00 00 |
| | (j) Harness (A) | 1 | 0351 0208 01 01 | | (c) Spring (13.5×10) | 1 | 8020 1340 00 00 |
| | (k) Screw (M3×6) | 4 | 9540 1015 00 00 | | (d) Spring Washer | 1 | 2331 0419 00 00 |
| | (l) Connector Substrate | 1 | 0351 0209 06 00 | (e) Retaining Ring (10×1) | 1 | 8030 1009 00 00 | |
| | (m) Throttle Assy. | 1set | 0351 0186 02 99 | Parts for YBX-600TE | | | |
| | (n) Driver Substrate Assy. | 1set | 0351 0197 04 99 | 2E | Liner Case Assy. | 1set | 0351 0422 00 95 |
| | (o) Screw (M3×25) | 1 | 9410 2042 00 00 | | (j) Main Shaft Assy. (E-type) | 1set | 0189 0614 00 98 |
| | (p) Unity Strap | 2 | 9790 1008 00 00 | Standard Accessories | | | |
| | (q) Display Operation Substrate | 1 | 0351 0196 01 00 | 8 | Protector | 1 | 0351 0029 00 00 |
| | (r) LED Mask Plate | 1 | 0351 0218 00 00 | | Hex. Wrench (H1.5×65×65) | 1 | 9610 1012 00 00 |
| (s) Screw (M3×8) | 4 | 9440 2002 00 00 | Optional Parts | | | | |
| (t) Panel Sheet | 1 | 0351 0217 00 00 | | Protector (For Battery) | 1 | 0351 0029 00 01 | |
| (u) Motor Case Cover | 1 | 0351 0001 00 00 | | | | | |
| (v) Battery Assy. (BL-22) | 1set | 0351 1521 03 99 | | | | | |
| 2 | Liner Case Assy. | 1set | 0351 0422 01 99 | | | | |
| | (a) Liner Case | 1 | 0189 0422 01 00 | | | | |
| | (b) O-Ring (1×28.2×30.2) | 1 | 9010 6036 00 00 | | | | |
| | (c) Liner Cap | 1 | 0186 0423 00 00 | | | | |
| | (d) Liner Upper Plate | 1 | 0186 0424 00 00 | | | | |
| | (e) O-Ring (JASO1026) | 1 | 9011 3003 00 00 | | | | |
| | Liner Assy. | 1set | 0186 0425 00 99 | | | | |
| | (f) Liner | 1 | ※ ↑ | | | | |
| | (g) Pin FF (2×4.8) | 4 | 8052 1041 00 00 | | | | |
| | (h) Relief Valve | 1 | 0351 0245 00 00 | | | | |
| | (i) Pin (1.5×4) | 1 | 8051 1314 00 00 | | | | |
| | (j) Main Shaft | 1 | 0189 0614 02 01 | | | | |
| | (k) Blade | 2 | 0351 0719 00 00 | | | | |
| | (l) Spring (3.25×23) | 2 | 8020 1363 00 00 | | | | |
| | Liner Lower Plate Assy. | 1set | 0189 0426 01 99 | | | | |
| | (m) Liner Lower Plate | 1 | 0189 0426 00 00 | | | | |
| | (n) Dowel Pin | 1 | 0188 0308 00 00 | | | | |
| (o) Adjust Bolt | 1 | 0188 0522 00 00 | | | | | |
| (p) O-Ring (N2) | 1 | 9010 4001 00 00 | | | | | |
| (q) Back-up Ring (3.2×5×1) | 1 | 9090 1028 00 00 | | | | | |
| (r) Oil Plug | 2 | 0181 0010 00 00 | | | | | |
| (s) O-Ring (N2) | 2 | 9010 4001 00 00 | | | | | |
| (t) O-Ring (P12) | 1 | 9011 7001 00 00 | | | | | |
| (u) Back-up Ring (12×16×0.8) | 1 | 9090 1010 00 00 | | | | | |
| 3* | Washer (12.5×18×0.3) | 1 | 8041 5034 00 00 | | | | |
| 4* | Washer (12.5×18×0.5) | 1 | 8041 5011 00 00 | | | | |
| 5* | Washer (12.5×18×1) | 1 | 8041 5021 00 00 | | | | |

The part "※" can not be supplied individually. So please order it as a unit of assembly shown by arrow mark(↑).
 ☆marked parts ; use one of them.