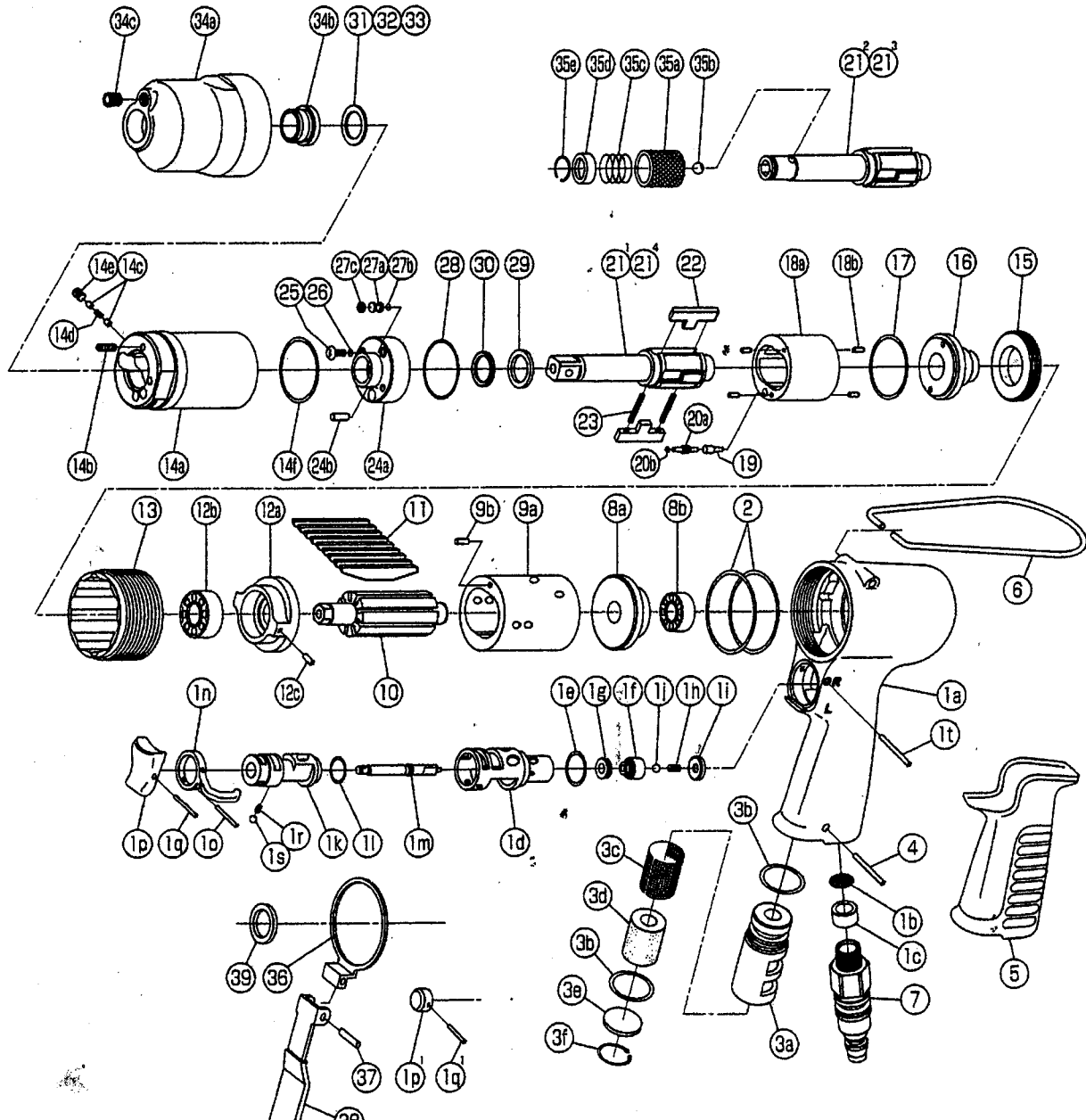


## IMPULSE WRENCH

MODEL (YES.No.)	TOOL No.	MODEL (YES.No.)	TOOL No.
Y-56 (03)	0159 0000 0300	Y-56-D (03)	0159 0000 0306
Y-56A (03)	0159 0000 0301	Y-56A-D(03)	0159 0000 0312
Y-56B (03)	0159 0000 0302	Y-56B-D(03)	0159 0000 0313
Y-56E (03)	0159 0000 0309	Y-56E-D(03)	0159 0000 0314

### Exploded View



# YOKOTA EUROPA BV

e-mail: [info@impulsetools.com](mailto:info@impulsetools.com)    <http://www.impulsetools.com>  
P.O. BOX 392 NL-1000 AJ AMSTERDAM PHONE 020-625 29 53 FAX 020-625 35 69  
Hydraulic Impulse Wrenches, Impact Wrenches, Drills, Grinders, Screw drivers, Chippers, Scalars, Pumps.

# Parts List

No.	Name of Parts	Per Set	Parts No.	No.	Name of Parts	Per Set	Parts No.
1	Motor Case Assy.	1set	0159 0011 00 99	15	Liner Cap	1	0081 0423 01 00
	(a) Motor Case	1	* ↑	16	Liner Upper Plate	1	0259 0424 01 00
	(b) Strainer	1	0259 0111 00 00	17	O - Ring (1.5×26.5×29.5)	1	9010 6023 00 00
	(c) Washer (7.5×11×5)	1	8042 2003 00 00	18	Liner Assy.	1set	0136 0425 00 99
	(d) Throttle Bushing	1	0158 0104 00 00		(a) Liner	1	* ↑
	(e) O - Ring (N16)	1	9010 4009 00 00	(b) Pin (AA 2×5)	4	8051 3091 00 00	
	Throttle Valve Assy.	1set	0159 0108 00 99	19	Relief Valve	1	0088 0245 00 00
	(f) Throttle Valve	1	* ↑	20	Spring Guide (B) Assy.	1	0088 0510 00 99
	(g) Rubber Pad	1	2331 0678 00 00		(a) Spring Guide (B)	1	* ↑
	(h) Spring (3.3×9.6)	1	8020 1317 00 00		(b) O - Ring (0.7×2×3.4)	1	9010 6020 00 00
	(i) Throttle Bushing Cap	1	2331 0160 00 00	21	Main Shaft	1	0159 0614 00 01
	(j) Ball (3.5mm)	1	9150 2006 00 00	22	Blade	2	0088 0719 03 00
	(k) Reverse Valve	1	0158 0005 00 00	23	Spring (3.1×20)	2	8020 1296 00 00
	(l) O - Ring (N12.5)	1	9010 4006 00 00	24	Liner Lower Plate Assy.	1set	0158 0426 00 99
	(m) Throttle Rod	1	0158 0106 01 00		(a) Liner Lower Plate	1	* ↑
	(n) Reverse Lever	1	0158 0007 00 00		(b) Spring Pin (3×8)	1	9250 2022 00 00
	(o) Spring Pin (2×12)	1	9250 1015 00 00	25	Oil Plug	1	0081 0010 01 00
	(p) Throttle Knob	1	0158 0153 00 00	26	O - Ring (N3)	1	9010 4025 00 00
	(q) Spring Pin (1.5×14)	1	9250 1005 00 00	27	Oil Stop Cap Assy.	1set	0081 0602 00 99
	(r) Spring (3×4)	1	8020 1246 00 00		(a) Oil Stop Cap	1	* ↑
(s) Ball (1/8)	1	9150 3009 00 00	(b) O - Ring (N2)		1	9010 4001 00 00	
(t) Pin (2.5×22)	1	8055 1062 00 00	(c) Back - up Ring (N2)	1	9090 2001 00 00		
2	O - Ring (1.6×35.7×38.9)	2	9010 6011 00 00	28	O - Ring (1×25.2×27.2)	1	9010 6012 00 00
3	Silencer Assy.	1set	0158 0053 00 99	29	O - Ring (P12)	1	9010 1050 00 00
	(a) Silencer Body	1	* ↑	30	Back - up Ring (12×16×1)	1	9090 5001 00 00
	(b) O - Ring (P12.5)	2	9010 1012 00 00	31*	Washer (12.5×18×0.3)	1	8041 5034 00 00
	(c) Silencer Sheet (A)	1	0158 0032 00 01	32*	Washer (12.5×18×0.5)	1	8041 5011 00 00
	(d) Silencer Sheet (B)	1	0158 0032 00 02	33*	Washer (12.5×18×1)	1	8041 5021 00 00
	(e) Silencer Cap	1	0094 0084 00 00	34	Hammer Case Assy.	1set	0136 0401 00 99
(f) Snap Ring (RTW-18)	1	9040 1010 00 00	(a) Hammer Case		1	0136 0401 00 00	
4	Pin G (3×20)	1	8410 6022 00 00		(b) Main Shaft Bushing	1	0259 0612 00 00
5	Rubber Grip	1	0158 0144 00 00	(c) Socket Plug (1/16-27)	1	8210 8001 00 00	
6	Hangar	1	0004 0017 00 00	<b>Parts for Y-56A · Y-56B</b>			
7	Swivel Joint	1	9690 0015 00 00	21 <sup>2</sup>	Main Shaft (A-type)	1	0159 0614 00 51
8	Upper Plate Assy.	1set	0094 0303 01 99	35	Bit Chuck Assy.	1set	2057 0414 00 99
	(a) Upper Plate	1	0094 0303 01 00		(a) Bit Chuck	1	2057 0414 00 00
(b) Ball Bearing (697MC2)	1	9102 3001 00 00	(b) Ball (1/8)		1	9150 3009 00 00	
9	Cylinder Assy.	1set	0159 0304 03 99		(c) Spring (13.5×11.2)	1	8020 1137 00 00
	(a) Cylinder	1	* ↑		(d) Spring Washer	1	2057 0419 00 00
(b) Pin (2.5×6)	1	8055 1053 00 00	(e) Retaining Ring (10×1)	1	8030 1009 00 00		
10	Rotor	1	0136 0305 00 00	<b>Parts for Y-56E</b>			
11	Vane	9	0159 0306 01 00	21 <sup>3</sup>	Main Shaft Assy.(E-type)	1set	0159 0614 00 59
12	Lower Plate Assy.	1set	0136 0307 01 99	<b>Special Parts for D-version</b>			
	(a) Lower Plate	1	0136 0307 01 00	1 <sup>1</sup>	Motor Case Assy.	1set	0159 0011 00 84
	(b) Ball Bearing (6900CM)	1	9102 1001 00 00		(p) Throttle Knob (A)	1	0158 0153 00 01
(c) Pin (2.5×6)	1	8055 1053 00 00	(q) Spring Pin (1.5×8)		1	9250 1003 00 00	
13	Lower Plate Spacer	1	0159 0311 00 00	36	Lever Guide	1	0158 0207 00 00
14	Liner Case (A) Assy.	1set	0159 0422 00 98	37	Spring Pin (3×18)	1	9250 2016 00 00
	(a) Liner Case	1	* ↑	38	Throttle Lever	1	0158 0110 00 00
	(b) Screw (M3×8)	1	9480 2024 00 00	39	Washer (12.7×18×1.6)	1	8042 1011 00 00
	(c) Rubber Plate	2	0081 0047 00 00	<b>Standard Accessories</b>			
	(d) Spring (2.4×6)	1	8020 1267 00 00	Hex. Wrench (H1.5×65×65)	1	9610 1012 00 00	
	(e) Screw (M3×3)	1	9480 2028 00 00	Hex. Wrench (H5/32)	1	9610 3008 00 00	
(f) O - Ring (N30)	1	7010 4019 00 00	Protector	1	0159 0029 00 00		

The part "\*" can not be supplied individually. So please order it as a unit of assembly shown by arrow mark (↑).  
 ★marked parts may be not used, in some case.