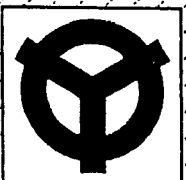
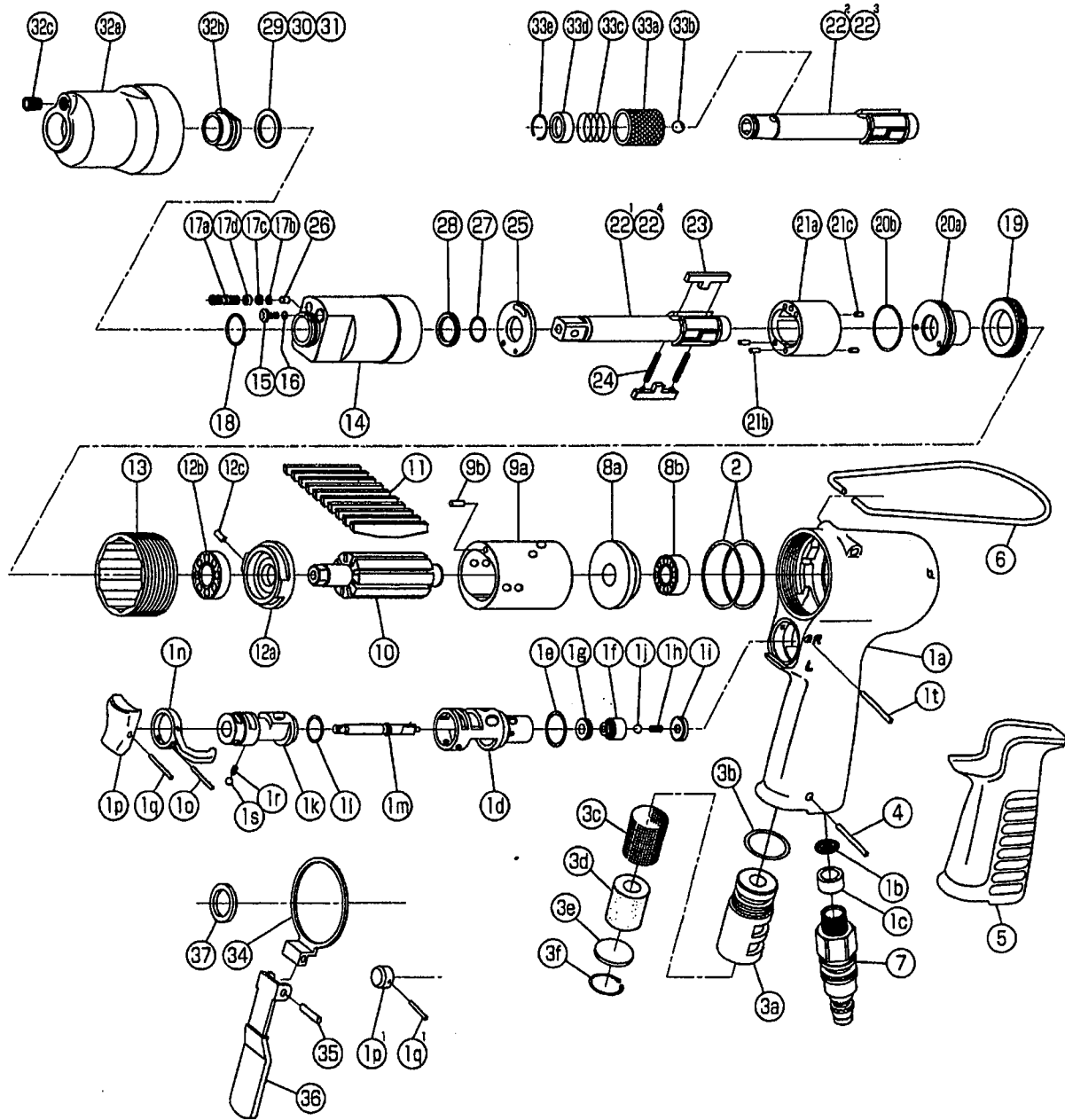


IMPULSE WRENCH

MODEL (YES.No.)	TOOL No.	MODEL (YES.No.)	TOOL No.
Y-46 (03)	0160 0000 0300	Y-46-D (03)	0160 0000 0306
Y-46A (03)	0160 0000 0301	Y-46A-D(03)	0160 0000 0312
Y-46B (03)	0160 0000 0302	Y-46B-D(03)	0160 0000 0313
Y-46E (03)	0160 0000 0309	Y-46E-D(03)	0160 0000 0314

Exploded View



YOKOTA EUROPA BV

P.O. BOX 392 NL-1000 AJ AMSTERDAM PHONE 020-5318800 FAX 020-5318808

e-mail info@impulsetools.com http://www.impulsetools.com

Hydraulic Impulse Wrenches, Impact Wrenches, Drills, Grinders, Screw Drivers, Chippers, Scalars, Pumps

Parts List

No.	Name of Parts	Per Set	Parts No.
1	Motor Case Assy.	1set	0160 0011 00 99
	(a) Motor Case	1	* ↑
	(b) Strainer	1	0259 0111 00 00
	(c) Washer (7.5×11×5)	1	8042 2003 00 00
	(d) Throttle Bushing	1	0158 0104 00 00
	(e) O - Ring (N16)	1	9010 4009 00 00
	Throttle Valve Assy.	1set	0160 0108 00 99
	(f) Throttle Valve	1	* ↑
	(g) Rubber Pad	1	2331 0678 00 00
	(h) Spring (3.3×9.6)	1	8020 1317 00 00
	(i) Throttle Bushing Cap	1	2331 0160 00 00
	(j) Ball (3.5mm)	1	9150 2006 00 00
	(k) Reverse Valve	1	0158 0005 00 00
	(l) O - Ring (N12.5)	1	9010 4006 00 00
	(m) Throttle Rod	1	0158 0106 01 00
	(n) Reverse Lever	1	0158 0007 00 00
	(o) Spring Pin (2×12)	1	9250 1015 00 00
	(p) Throttle Knob	1	0158 0153 00 00
	(q) Spring Pin (1.5×14)	1	9250 1005 00 00
	(r) Spring (3×4)	1	8020 1246 00 00
(s) Ball (1/8)	1	9150 3009 00 00	
(t) Pin (2.5×22)	1	8055 1062 00 00	
2	O - Ring (N31.5)	2	9010 4041 00 00
3	Silencer Assy.	1set	0160 0053 00 99
	(a) Silencer Body	1	* ↑
	(b) O - Ring (P12.5)	1	9010 1012 00 00
	(c) Silencer Sheet (A)	1	2331 0032 00 01
	(d) Silencer Sheet (B)	1	0160 0032 00 02
	(e) Silencer Cap	1	2306 0084 00 00
(f) Snap Ring (RTW-14)	1	9040 1006 00 00	
4	Pin G (3×20)	1	8410 6022 00 00
5	Rubber Grip	1	0158 0144 00 00
6	Hangar	1	0004 0017 00 00
7	Swivel Joint	1	9690 0015 00 00
8	Upper Plate Assy.	1set	0273 0303 01 99
	(a) Upper Plate	1	0273 0303 01 00
	(b) Ball Bearing (6800CM)	1	9102 1002 00 00
9	Cylinder Assy.	1set	0273 0304 00 99
	(a) Cylinder	1	* ↑
	(b) Pin (2.5×5)	1	8051 1071 00 00
10	Rotor	1	0273 0305 00 00
11	Vane	9	0160 0306 01 00
12	Lower Plate Assy.	1set	0273 0307 01 99
	(a) Lower Plate	1	0273 0307 01 00
	(b) Ball Bearing (6900CM)	1	9102 1001 00 00
	(c) Pin (2.5×5)	1	8051 1071 00 00
13	Lower Plate Spacer	1	0273 0311 00 00
14	Liner Case	1	0273 0422 00 00
15	Oil Plug	1	0081 0010 01 00
16	O - Ring (N3)	1	9010 4025 00 00
17	Adjust Bolt Assy.	1set	0095 0522 01 99

No.	Name of Parts	Per Set	Parts No.
	(a) Adjust Bolt	1	* ↑
	(b) O - Ring (N2)	1	9010 4001 00 00
	(c) Back- up Ring (N2)	1	9090 2001 00 00
	(d) Nylon Bushing (4.5×2.8×1.8)	1	0270 0431 00 00
18	Retaining Ring (15×1.2)	1	8030 1074 00 00
19	Liner Cap	1	0273 0423 00 00
20	Liner Upper Plate Assy.	1set	0273 0424 00 99
	(a) Liner Upper Plate	1	0273 0424 00 00
	(b) O - Ring (N22)	1	9010 4011 00 00
21	Liner Assy.	1set	0273 0425 00 99
	(a) Liner	1	* ↑
	(b) Pin (2×8)	2	8052 1020 00 00
	(c) Pin (2×5)	2	8052 1017 00 00
22 ¹	Main Shaft	1	0160 0614 00 01
23	Blade	2	0273 0719 01 00
24	Spring (2.85×19)	2	8020 1292 00 00
25	Liner Lower Plate	1	0273 0426 00 00
26	Pin (3×5)	1	8051 1295 00 00
27	O - Ring (P12)	1	9010 1011 00 00
28	Back- up Ring (12×16×1)	1	9090 5001 00 00
29*	Washer (12.5×18×0.3)	1	8041 5034 00 00
30*	Washer (12.5×18×0.5)	1	8041 5011 00 00
31*	Washer (12.5×18×1)	1	8041 5021 00 00
32	Hammer Case Assy.	1set	0273 0401 00 99
	(a) Hammer Case	1	0273 0401 00 00
	(b) Main Shaft Bushing	1	0273 0612 00 00
	(c) Socket Plug (1/16-27)	1	8210 8001 00 00
Parts for Y-46A · Y-46B			
22 ²	Main Shaft (A-type)	1	0160 0614 00 51
22 ³	Main Shaft (B-type)	1	0160 0614 00 52
33	Bit Chuck Assy.	1	2057 0414 00 99
	(a) Bit Chuck	1	2057 0414 00 00
	(b) Ball (1/8)	1	9150 3009 00 00
	(c) Spring (13.5×11.2)	1	8020 1137 00 00
	(d) Spring Washer	1	2057 0419 00 00
	(e) Retaining Ring (10×1)	1	8030 1009 00 00
Parts for Y-46E			
22 ⁴	Main Shaft Assy.(E-type)	1set	0160 0614 00 59
Special Parts for D-version			
1 ¹	Motor Case Assy.	1set	0160 0011 00 84
	(p) Throttle Knob (A)	1	0160 0153 00 01
	(q) Spring Pin (1.5×8)	1	9250 1003 00 00
34	Lever Guide	1	0160 0207 00 00
35	Spring Pin (3×18)	1	9250 2016 00 00
36	Throttle Lever	1	0158 0110 00 00
37	Washer (12.7×18×1.6)	1	8042 1011 00 00
Standard Accessories			
	Hex. Wrench (H2×65×65)	1	9610 1013 00 00
	Hex. Wrench (H5/32)	1	9610 3008 00 00
	Protector	1	0160 0029 00 00

The part "※" can not be supplied individually.

So please order it as a unit of assembly shown by arrow mark (↑) .

★marked parts may be not used, in some case.