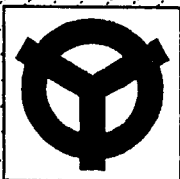
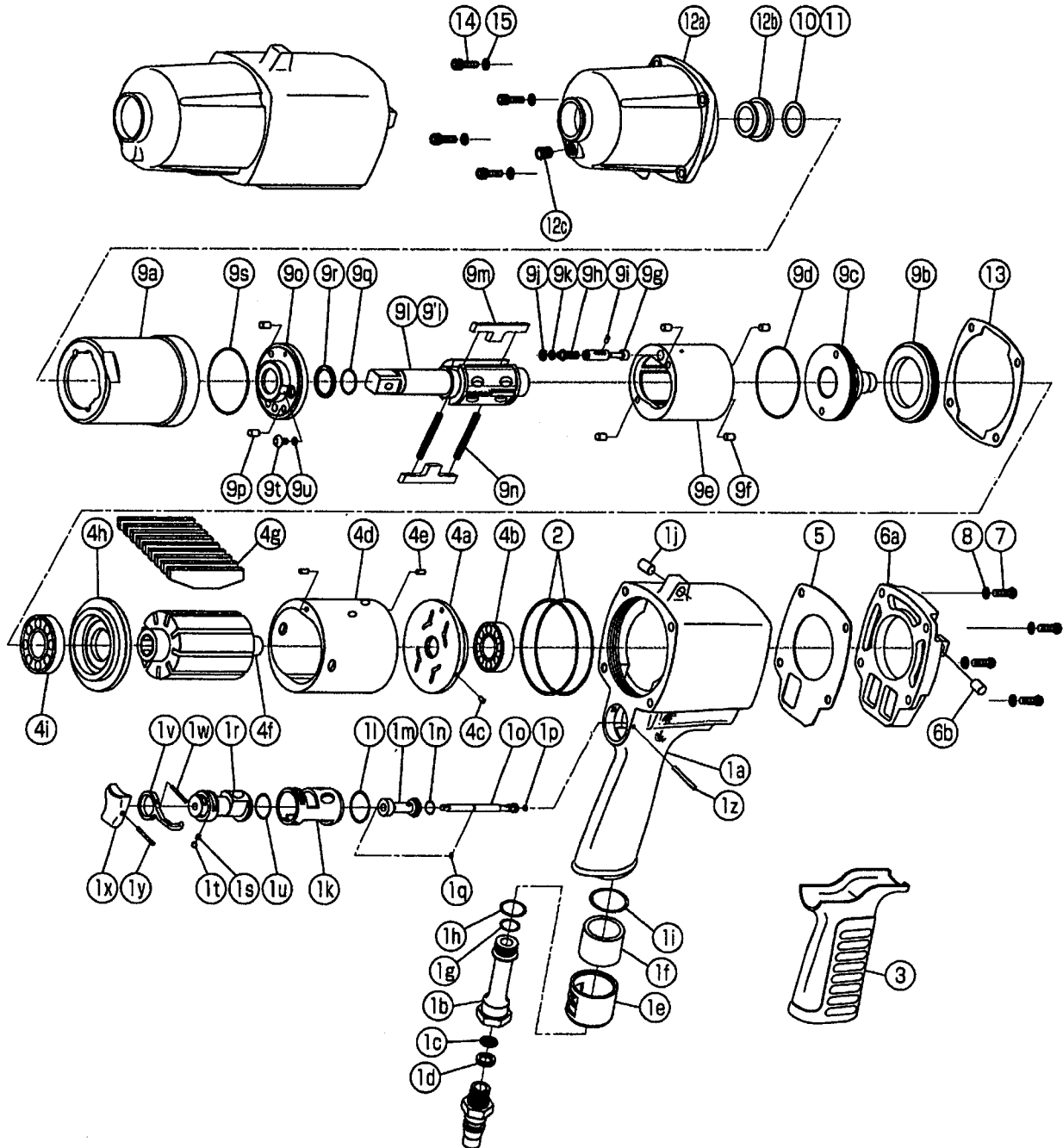


IMPULSE WRENCH

MODEL (YES.No.)	TOOL No.
Y-130E (01)	0335 0000 0109
Y-130 (01)	0335 0000 0100

Exploded View



YOKOTA EUROPA BV

P.O. BOX 392 NL-1000 AJ AMSTERDAM PHONE 020-5318800 FAX 020-5318808
 e-mail info@impulsetools.com http://www.impulsetools.com

Hydraulic Impulse Wrenches, Impact Wrenches, Drills, Grinders, Screw Drivers, Chippers, Sealers, Pumps.

Parts List

No.	Name of Parts	Per Set	Parts No.	No.	Name of Parts	Per Set	Parts No.
1	Motor Case Assy.	1set	0335 0011 00 99	9	Liner Case Assy.	1set	0335 0422 02 99
	(a) Motor Case	1	* ↑		(a) Liner Case	1	0335 0422 00 00
	Hose Joint Assy.	1set	0335 0113 00 99		(b) Liner Cap	1	0335 0423 00 00
	(b) Hose Joint	1	0335 0113 00 00		(c) Liner Upper Plate	1	0335 0424 00 00
	(c) Strainer	1	0259 0111 00 00		(d) O - Ring (N42)	1	9010 4018 00 00
	(d) Washer (7.5×11×2)	1	8042 2008 00 00		Liner Assy.	1set	0335 0425 01 99
	(e) Exhaust Cover	1	0335 0016 00 00		(e) Liner	1	* ↑
	(f) Silencer Sheet	1	0335 0032 00 00		(f) Pin (4×7 41-44 HRC)	4	8052 1037 00 00
	(g) O - Ring (N12)	1	9010 4005 00 00		(g) Relief Valve	1	0335 0245 00 00
	(h) O - Ring (N16)	1	9010 4009 00 00		(h) Adjust Bolt	1	0334 0522 00 00
	(i) O - Ring (N24)	1	9010 4012 00 00		(i) Pin (2×6)	1	8051 1038 00 00
	(j) Spring Pin (6×10)	1	9250 1082 00 00		(j) Back-up Ring (4×6.2×1.25)	1	9090 1026 00 00
	3 Stage Throttle Assy.	1set	0335 0186 00 99		(k) O - Ring (N4)	1	9010 4021 00 00
	(k) Throttle Bushing	1	0335 0104 00 00		(l) Main Shaft	1	0335 0614 01 01
	(l) O - Ring (N20)	1	9010 4010 00 00		(m) Blade	2	0335 0719 00 00
	Throttle Rod Bushing Assy.	1set	0335 0105 00 99		(n) Spring (4.1×36)	2	8020 1257 00 00
	(m) Throttle Rod Bushing	1	0335 0105 00 00		Liner Lower Plate Assy.	1set	0335 0426 01 99
	(n) O - Ring (P9 Hs90)	1	9010 1051 00 00		(o) Liner Lower Plate	1	* ↑
	Throttle Rod Assy.	1set	0335 0106 00 99		(p) Pin C (4×8)	2	8410 2032 00 00
	(o) Throttle Rod	1	0335 0106 00 00		(q) O - Ring (P16 Hs90)	1	9011 0008 00 00
	(p) O - Ring (N4 Hs90)	1	9010 4058 00 00		(r) Back-up Ring (16×20×1.5)	1	9090 1012 00 00
	(q) Snap Ring (ETW-2.8)	1	9040 5008 00 00		(s) O - Ring (N44)	1	9010 4020 00 00
	(r) Reverse Valve	1	0335 0005 00 00		(t) Oil Plug (M4)	1	0048 0010 00 00
	(s) Spring (3×4)	1	8020 1246 00 00		(u) O - Ring (N4)	1	9010 4021 00 00
	(t) Ball (1/8)	1	9150 3009 00 00		10* Washer (16.5×22×0.3)	1	8041 5038 00 00
	(u) O - Ring (N16)	1	9010 4009 00 00		11* Washer (16.5×22×0.5)	1	8041 5039 00 00
	(v) Reverse Lever	1	0334 0007 00 00		12	Hammer Case Assy.	1set
(w) Spring Pin (2×12)	1	9250 1015 00 00	(a) Hammer Case	1		0335 0401 00 00	
(x) Throttle Knob	1	0158 0153 00 00	(b) Main Shaft Bushing	1		0141 0612 00 00	
(y) Spring Pin (1.5×14)	1	9250 1005 00 00	(c) Socket Plug (PT1/8)	1	8210 5001 00 00		
(z) FF Pin (2.5×25)	1	8055 1063 00 00	13 S - Packing (B)	1	0335 0003 00 02		
2 O - Ring (N60)	2	9010 4049 00 00	14 Hexagon Socket Bolt (M5×16)	4	8070 3051 00 00		
3 Rubber Grip	1	0334 0144 00 00	15 Spring Washer (M5)	4	9200 3005 00 00		
4	Motor Assy.	1set	0335 0305 01 99	Parts for Y-130E			
	Upper Plate Assy.	1set	0335 0303 01 99	9'	Liner Case Assy.	1set	0335 0422 02 98
	(a) Upper Plate	1	0335 0303 01 00	(l) Main Shaft Assy. (E-type)	1set	0335 0614 01 99	
	(b) Ball Bearing (6201CM)	1	9102 1009 00 00	Standard Accessories			
	(c) Pin (2.5×6)	1	8055 1053 00 00	Protector	1	0335 0029 00 00	
	Cylinder Assy.	1set	0335 0304 01 99	Touch Joint (1/4-02)	1	9690 0002 00 00	
	(d) Cylinder	1	* ↑	Hex. Wrench (H5)	1	9610 1006 00 00	
	(e) Pin (2.5×6)	2	8055 1053 00 00	Hex. Wrench (H2×65×65)	1	9610 1013 00 00	
	(f) Rotor	1	0335 0305 00 00				
	(g) Vane	9	0335 0306 00 00				
	Lower Plate Assy.	1set	0335 0307 01 99				
	(h) Lower Plate	1	0335 0307 01 00				
	(i) Ball Bearing (6904CM)	1	9102 1010 00 00				
5 S - Packing (A)	1	0335 0003 00 01					
6	Motor Case Cover Assy.	1set	0335 0001 00 99				
	(a) Motor Case Cover	1	0335 0001 00 00				
	(b) Spring Pin (6×10)	1	9250 1082 00 00				
7 Hexagon Socket Bolt (M5×14)	4	8071 1009 00 00					
8 Spring Washer (M5)	4	9200 3005 00 00					

The part "*" can not be supplied individually.
 So please order it as a unit of assembly shown by arrow mark (↑).
 ☆marked parts; use one of them.