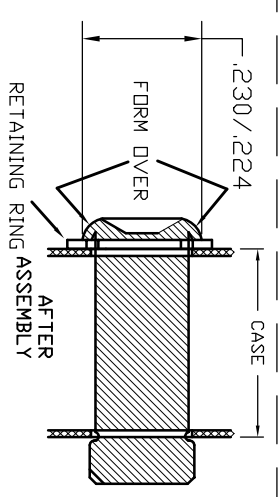
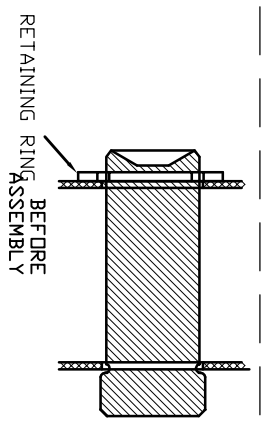
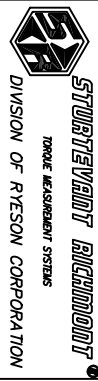


816799—THIS PIN IS FORMED OVER CUSTOMER MUST GRIND OFF FORMED END & INSTALL THIS PIN FORMING THE HEAD OVER THE RETAINING RING AS SHOWN.



857046—INSTRUCTIONS  
 811075—Tang Ass'y. (includes Tang, Pin & spring adapter, & Adj. screw)

LEGEND: ( ) = Quantity/Tool  
 \* = Quantity/Multi-Pak



THIS PRINT AND ALL INFORMATION APPEARING THEREON IS THE PROPERTY OF STURTEVANT/RICHMONT - NEITHER THE PRINT NOR THE INFORMATION THEREON MAY BE REPRODUCED OR USED IN ANY MANNER WHATSOEVER BY ANY OTHER PERSON UNLESS SPECIFICALLY AUTHORIZED BY STURTEVANT/RICHMONT.

PART DESCRIPTION	DIAGRAM NO. & REV.
CCM 18001 (IN./LBS)	810762-N