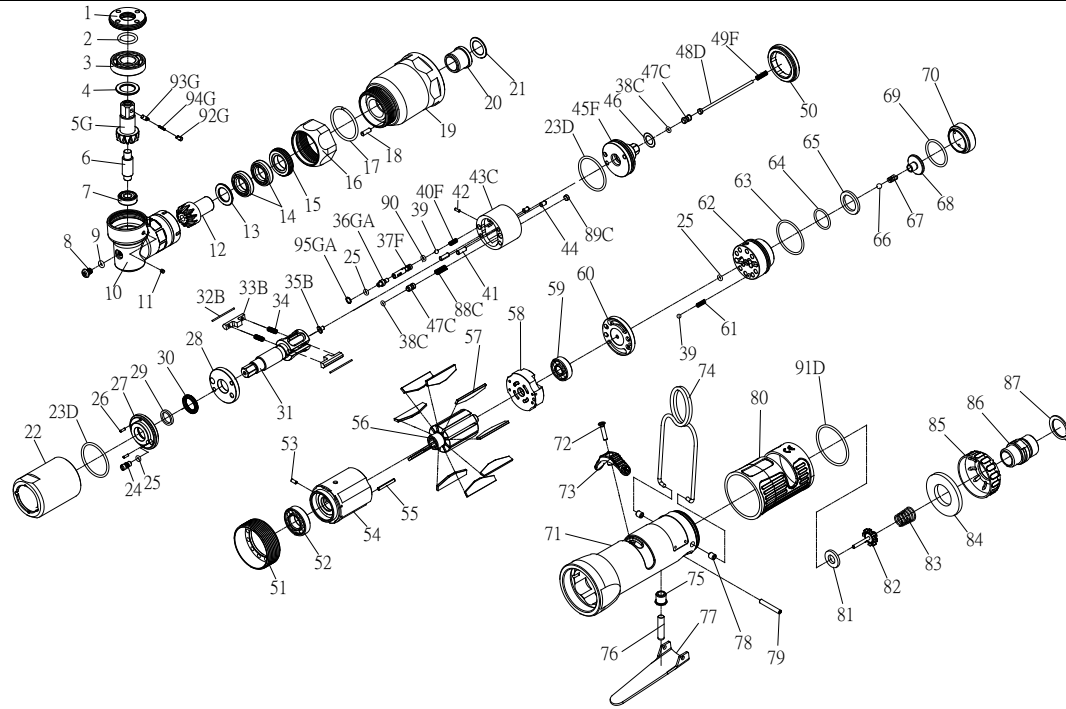


RRI-70RT IMPULSE WRENCH



Edition:07A

| Index No. | Part No. | Description | Q'ty | Index No. | Part No. | Description | Q'ty |
|-----------|-------------|------------------------|------|-----------|-----------|---|------|
| 1 | I50R-706 | Lock Nut | 1 | 53 | 00-3324 | Spring Pin | 1 |
| 2 | 00-41134 | O-Ring | 1 | 54 | I70S-302 | Cylinder | 1 |
| 3 | 00-2358 | Ball Bearing | 1 | 55 | 00-3326 | Spring Pin | 1 |
| 4 | I50R-711 | Washer | 1 | 56 | I70S-303 | Rotor | 1 |
| 5G | I50R-705-B | Shaft Gear | 1 | 57 | I70S-304 | Rotor Blade | 9 |
| 6 | I50R-707 | Shaft | 1 | 58 | I50S-305 | Rear Plate | 1 |
| 7 | 00-2357 | Ball Bearing | 1 | 59 | 00-2356 | Ball Bearing | 1 |
| 8 | I90-410 | Plug | 1 | 60 | I40S-310 | Air inlet Plate | 1 |
| 9 | 00-4153 | O-Ring | 1 | 61 | 305F-034 | Spring | 1 |
| 10 | I50R-701 | Angle Housing | 1 | 62 | IS40S-502 | F/R Valve | 1 |
| 11 | 00-0605 | Set Screw | 1 | 63 | 00-41146 | O-Ring | 1 |
| 12 | I50R-704 | Main Shaft Gear | 1 | 64 | 00-4121 | O-Ring | 1 |
| 13 | I50R-712 | Washer | 1 | 65 | IS40S-312 | Valve Washer | 1 |
| 14 | 00-2352 | Ball Bearing | 2 | 66 | 00-3824 | Steel Ball | 1 |
| 15 | I50R-709 | Lock Nut | 1 | 67 | IS40S-313 | Spring | 1 |
| 16 | I50R-702 | Lock Nut | 1 | 68 | IS40S-311 | Valve | 1 |
| 17 | I50R-708 | Anvil Collar | 1 | 69 | 00-41125 | O-Ring | 1 |
| 18 | 00-3430 | Pin | 1 | 70 | I40S-309 | Seat | 1 |
| 19 | I70R-201 | Front Housing | 1 | 71 | I70S-101B | Motor Housing | 1 |
| 20 | I40S-202 | Bushing | 1 | 72 | 00-0507 | Screw | 1 |
| 21 | I40S-424 | Washer | 1 | 73 | I40S-503 | Regulator Knob | 1 |
| 22 | I70-401 | Pulse Cylinder Housing | 1 | 74 | I40S-102 | Hanger | 1 |
| 23D | 00-41160 | O-Ring | 2 | 75 | I40S-509 | Bushing | 1 |
| 24 | I70-410 | Oil Plug | 1 | 76 | IS40S-510 | Pin | 1 |
| 25 | 00-41113 | O-Ring | 3 | 77 | I40S-504 | Trigger | 1 |
| 26 | 00-3318 | Spring Pin | 2 | 78 | I40S-108 | Bushing | 2 |
| 27 | I70-403 | Front Plate Cover | 1 | 79 | 00-3306 | Spring Pin | 1 |
| 28 | I70-408 | Front Plate | 1 | 80 | I40S-103 | Housing Rubber | 1 |
| 29 | I70-409 | Back Up Ring | 1 | 81 | I40S-508 | Bushing | 1 |
| 30 | 00-2602 | X-Ring | 1 | 82 | 305C-021 | Valve Stem | 1 |
| 31 | I70R-405 | Main Shaft | 1 | 83 | I40S-507 | Spring | 1 |
| 32B | I70-452 | Roller | 2 | 84 | I40S-601 | Muffler | 1 |
| 33B | I70-406-B | Drive Blade | 2 | 85 | I40S-603 | Exhaust Deflector | 1 |
| 34 | I70-407 | Spring | 2 | | I40S-604A | Air Inlet 1/4"PF-19 | |
| 35B | IS40-450 | Block Valve | 1 | 86 | I40S-604B | Air Inlet 1/4"PT-19 | 1 |
| 36GA | I80-411 | Adjust Screw | 1 | | I40S-604C | Air Inlet 1/4"NPT-18 | |
| 37F | IS70-412-C | Valve | 1 | 87 | 00-3509 | Snap Ring | 1 |
| 38C | 00-41173 | O-Ring | 2 | 88C | I70S-453 | Spring | 1 |
| 39 | 00-3813 | Steel Ball | 2 | 89C | I40S-454 | Block Cap | 1 |
| 40F | IS70R-425-C | Spring | 1 | 90 | 00-41130 | O-Ring | 1 |
| 41 | 00-3435 | Pin | 2 | 91D | 00-41127 | O-Ring | 1 |
| 42 | 00-3436 | Pin | 1 | 92G | I40S-462 | Upper Pin | 1 |
| 43C | I70-404-B | Pulse Cylinder | 1 | 93G | I40S-463 | Lower Pin | 1 |
| 44 | 00-3407 | Pin | 2 | 94G | I40S-464 | Spring | 1 |
| 45F | IS70-415-C | Rear Plate | 1 | 95GA | I80-422 | Back Up Ring | 1 |
| 46 | I40S-423 | Washer | 1 | ※ | IS70RRK | Repair kit :Index No- 23D(2);25(2);29;30;34(2);38C(2) | |
| 47C | IS40S-421 | Pressure Valve | 2 | ※ | IS70RSK | Service kit :Index No- 5G;12;28;31;32B(2);33B(2);45F; 57(9);67;81;82;83 | |
| 48D | IS130-314 | Shut Off Stem | 1 | ※ | | | |
| 49F | IS150-317 | Spring | 1 | ※ | I40-451 | Impulse Oil | |
| 50 | I70-402 | Lock Nut | 1 | | | | |
| 51 | I70S-306 | Lock Nut | 1 | | | | |
| 52 | 00-2348 | Ball Bearing | 1 | | | | |

★ Pulse unit includes:

Index No : 22,23D,24,25,26,27,28,29,30,31,32B,33B,34,35B,36GA,37F,38C,39,40F,41,42,43C,44,45F,47C,50,88C,89C,90,95GA