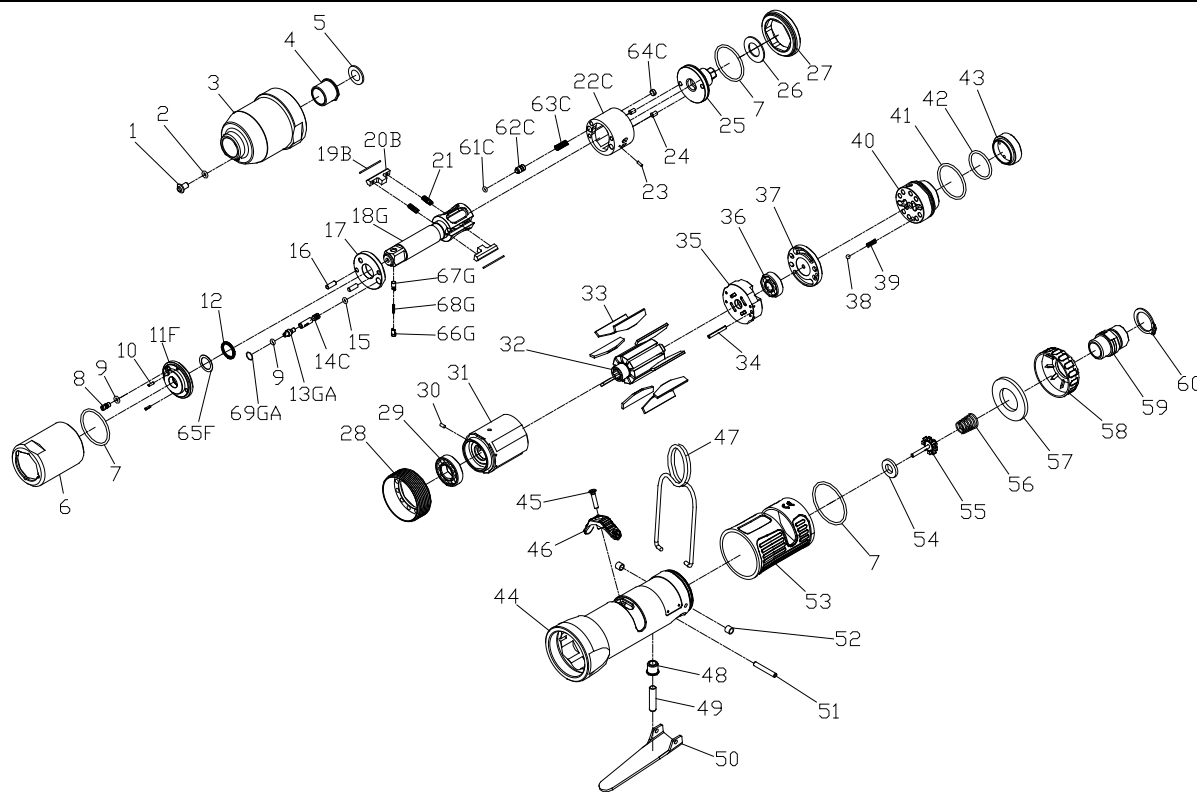


RRI-50S IMPULSE WRENCH



Edition:07A

Index No.	Part No.	Description	Q'ty	Index No.	Part No.	Description	Q'ty
1	I100-410	Plug	1	40	I40S-502	F/R Valve	1
2	00-4153	O-Ring	1	41	00-41146	O-Ring	1
3	I40S-201	Front Housing	1	42	00-41125	O-Ring	1
4	I40S-202	Bushing	1	43	I40S-309	Seat	1
5	I40S-424	Washer	1	44	I40S-101B	Motor Housing	1
6	I40S-401	Pulse Cylinder Housing	1	45	00-0507	Screw	1
7	00-41127	O-Ring	3	46	I40S-503	Regulator Knob	1
8	I70-410	Oil Plug	1	47	I40S-102	Hanger	1
9	00-41113	O-Ring	2	48	I40S-509	Bushing	1
10	00-3318	Spring Pin	2	49	I40S-510	Pin	1
11F	I40S-403-B	Front Plate Cover	1	50	I40S-504	Trigger	1
12	00-2602	X-Ring	1	51	00-3306	Spring Pin	1
13GA	I80-411	Adjust Screw	1	52	I40S-108	Bushing	2
14C	IS40S-412-B	Valve	1	53	I40S-103	Housing Rubber	1
15	00-41130	O-Ring	1	54	I40S-508	Bushing	1
16	00-3435	Pin	2	55	305C-021	Valve Stem	1
17	I40S-408	Front Plate	1	56	I40S-507	Spring	1
18G	I40S-405-B	Main Shaft	1	57	I40S-601	Muffler	1
19B	I40S-452	Roller	2	58	I40S-603	Exhaust Deflector	1
20B	I40S-406-B	Drive Blade	2		I40S-604A	Air Inlet 1/4"PF-19	
21	I40S-407	Spring	2	59	I40S-604B	Air Inlet 1/4"PT-19	1
22C	I40S-404-B	Pulse Cylinder	1		I40S-604C	Air Inlet 1/4"NPT-18	
23	00-3436	Pin	1	60	00-3509	Snap Ring	1
24	00-3407	Pin	2	61C	00-41173	O-Ring	1
25	I40S-415	Rear Plate	1	62C	IS40S-421	Pressure Valve	1
26	I40S-423	Washer	1	63C	I40S-453	Spring	1
27	I40S-402	Lock Nut	1	64C	I40S-454	Block Cap	1
28	I40S-306	Lock Nut	1	65F	I40-409	Back Up Ring	1
29	00-2348	Ball Bearing	1	66G	I40S-462	Upper Pin	1
30	00-3324	Spring Pin	1	67G	I40S-463	Lower Pin	1
31	I40S-302	Cylinder	1	68G	I40S-464	Spring	1
32	I40S-303	Rotor	1	69GA	I80-422	Back Up Ring	1
33	I40S-304	Rotor Blade	9	✳	I50SRK	Repair kit :Index No-7(2); 9(2); 12; 21(2); 61C; 65F	
34	00-3326	Spring Pin	1	✳	I50SSK	Service kit :Index No-17; 18G; 19B(2); 20B(2); 25; 33(9); 54; 55; 56	
35	I50S-305	Rear Plate	1	✳	I40-451	Impulse Oil	
36	00-2356	Ball Bearing	1				
37	I40S-310	Air Inlet Plate	1				
38	00-3813	Steel Ball	1				
39	305F-034	Spring	1				

★ Pulse unit includes:

Index No : 6,7,8,9,10,11F,12,13GA,14C,15,16,17,18G,19B,20B,21,22C,23,24,25,27,61C,62C,63C,64C,65F,66G,67G,68G,69GA